



ACTIV-GRATE™ 600 SERIES:

LDPE HINGES, MAXIMUM LOAD CAPACITY, RECESSED

Designed for wheel loads of up to 1000 lbs, the tough 600 series grating can withstand heavy traffic. Recessed installation of this grating always provides a smooth transition to the interior of your building.

FEATURES:

- LDPE hinges keep grating quiet and cushion impact
- Drainage holes between tread rails allows moisture and dirt to fall below mat.
- Grate rolls up compactly for cleaning.

PRODUCT DETAILS:

Rail Material: 6063-T6 extruded aluminum alloy

Depth: 3/4" (19 mm).

Standard Finish: Mill

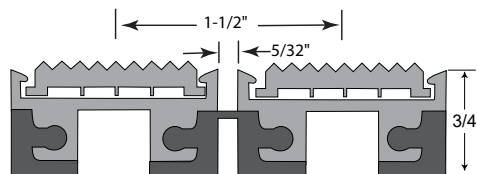
Tread Spacing: 1-1/2" (38.1 mm) on center with 8 treads per foot in the direction of travel.

Spacing Between Rails: Heelproof spacing of 5/32"

Rolling Wheel Load Rating: 1000 lb



EG600 in Pepper



EG602 Cross-Section

TREAD SELECTION: SEE PAGE 12-13 FOR MORE DETAILS

EG600 Premium Carpet Tread: Super-absorbent, stain-resistant 33 oz. nylon carpet for interiors, now with 10 mil scraping fibers added.

EG601 Vinyl Tread: Full length serrations provide excellent traction for wet interior entry ways.

EG602 Serrated Aluminum Tread: All aluminum construction with full-length serrations, nonflammable and waterproof for interior or exterior entry ways.

EG604 Vinyl Abrasive Tread: Abrasive grit provides our highest coefficient of friction for interior installations.

EG605 Tuff Tread™: Non-absorbent polypropylene carpet with tough 20 mil fibers is best at scraping shoes to remove dirt. Interior or exterior.

EG610 Alternating: Two types of tread in an alternating pattern provide scraping combined with absorbent carpet for maximum building protection.



EG601 in Gray

FRAME SELECTION: SEE PAGE 8-11 FOR MORE DETAILS

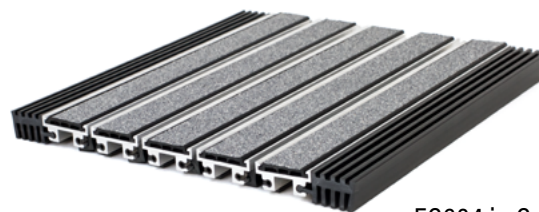
EFRC6 - Recessed Cast-In Place Frame: Cast-in-place recessed level-bed frame with mitered corners that connect quickly with corner keys. 1-3/8" (34.9mm) frame has 3/4" (19mm) recess for tread rail and 1/2" (12.7 mm) wide profile.

EFRA6 - Recessed Angle Frame: Angle frame for butting up to tile or carpet. 3/4" deep by 1/8" (3.2mm) profile.

FINISH OPTIONS:

Finish Type: Mill or Anodized

Anodized Options: Clear, Light Bronze, Medium Bronze, Dark Bronze or Black



EG604 in Gray



EG605 in Mocha