

FIRE-RATED VALVE & HOSE CABINETS ARE NOT PROVIDED WITH KNOCK-OUTS. KNOCKOUTS ARE TO BE INSTALLED USING THESE INSTRUCTIONS

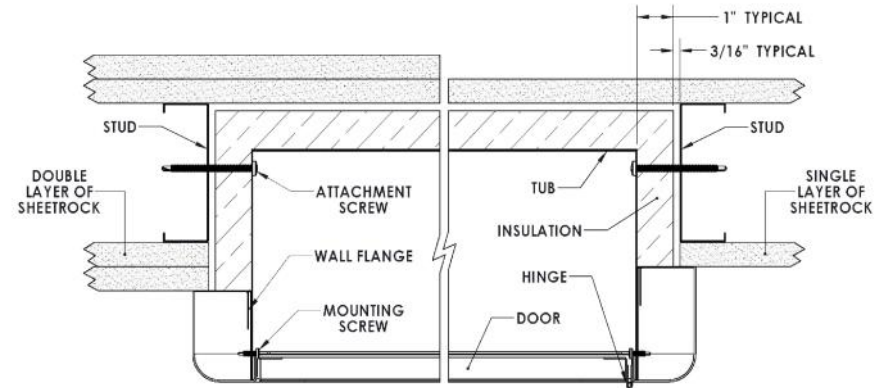
METAL OR WOOD FRAMING:

1. Remove all hardware and glazing, unlock cabinet if lock provided.
2. Install a framed opening above, below and at both sides of cabinet opening at specified location. Wall opening width, height and depth must correspond with dimensions indicated in catalog or detail and submittal sheet.
3. Use holes provided in cabinet tub for attaching to studding. If wall configuration does not allow for that, then follow step 4 below; otherwise, skip to step 5.
4. [Drilling Additional Holes in Tub] Drill (2) 1/8" (3.2 mm) holes through tub on each side of cabinet.
5. At this time also drill the knockout(s) with a circular-cutting hole saw.

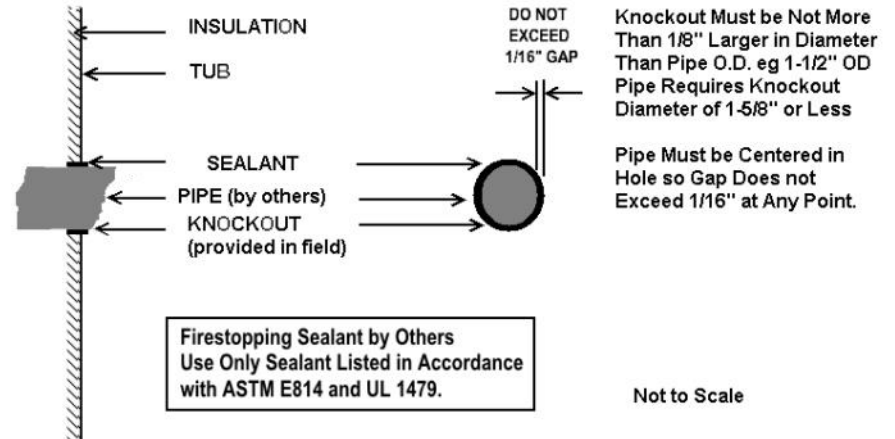
NOTE: The following conditions must be adhered to when installing fire-rated hose and/or valve cabinets.

The pipe used must be iron or steel. The tolerance between the pipe and the knockout must be 1/16" (0.16 cm) or less at every point along the knockout. For example, the knockout for 1-1/2" (3.8 cm) pipe must not be larger than 1-5/8" (4.1 cm) in diameter, and the pipe; must be centered within the knockout. When the pipe is installed, the installer must provide firestopping sealant (listed in accordance with ASTM E814 and UL 1479) for through-penetrations in fire-resistance rated wall and cabinet assemblies.

6. Place cabinet in position and attach with Universal # 6 x 2-1/2" (6.4 cm) self-drilling screws. Be sure not to over-tighten on either side, which could pull the cabinet out of position in the opening and result in an exposed gap between the cabinet frame and wall opening.
7. Start the screw without completely tightening; then start a screw on the opposite side of the tub. One all screws are started, tighten each screw in a "criss-cross" pattern. A torque setting of 4-6 is recommended if using a screw gun.
8. Once screws are fully tightened, check cabinet for square and plumb. Adjust if necessary. All interior sides should be straight with no bowing or warping.
9. Check cabinet door assembly for freedom of movement. If it binds, shim as necessary to remove any racking of tub at attachments of stud. Cabinet will need to be removed temporarily in order to add shims
10. Remove protective plastic from acrylic or glass and install decal if intended for glass. (Panorama Models Glazing is Pre-Installed)
11. Align glazing on inside of door, holding in place while installing glass mounting clips on inside of door. Do not over-tighten.
12. Install handle and roller catch or SAF-T-LOK™ in door.



FIRE-FX2 VALVE & HOSE SECTION DETAIL - LOCATION TO VARY



Note: Drawings shown on this page are examples only of typical installation in a fire-rated wall, and are not to be used as recommendations for wall construction.



ACTIVAR
INC. www.activarcpg.com
Construction Products Group

© Activar Construction Products Group, Inc 2015
FIRE-FX2™ AND SAF-T-LOK™ ARE TRADEMARKS OF ACTIVAR, INC.

Fire-Rating: Fire-FX2™ cabinets are fabricated in accordance with the UL label for one and two hour combustible and non-combustible wall system building codes. The fire testing has met the requirement of ANSI/UL 1479 (ASTM –E814) and ULC/CAN S115-for membrane and penetration firestops. Installation instructions must be strictly adhered to in order to obtain the fire rating.



HEADQUARTERS & CUSTOMER SERVICE: 9702 NEWTON AV S, BLOOMINGTON, MN 55431 PH: 800-554-6077 FAX: 952-835-2218 EMAIL: SALES@ACTIVARCPG.COM WWW.ACTIVARCPG.COM
ACPG WEST COAST/SAMSON: COMMERCE, CA WAREHOUSES: DALLAS TX, FORT MYERS FL, LANCASTER PA, ATLANTA GA, CHICAGO, IL, SEATTLE WA, OMAHA NE, FARGO ND 12/10/2014 14I-104 REV B