



JL INDUSTRIES

**FLOOR GRATINGS
AND MATS**



Division 12 48 13
**Entrance Floor Mats
and Frames**

Division 12 48 19
Entrance Floor Gratings

ACTIVAR
INC.

www.activar.com

Construction Products Group



JL INDUSTRIES



AIR
LOUVERS



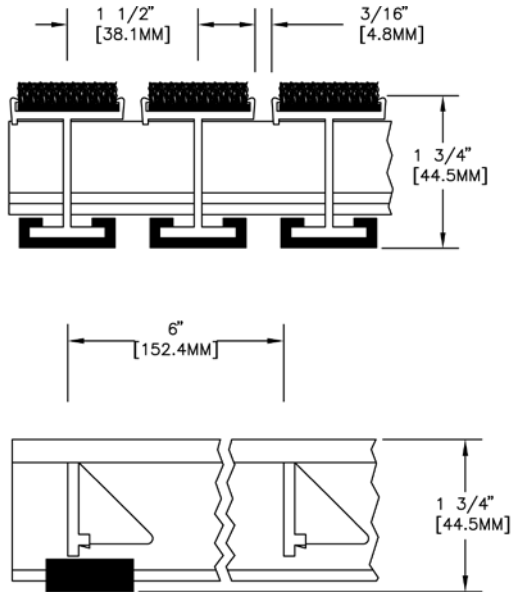
SAMSON PRODUCTS



THOMAS
ENTERPRISES



HIAWATHA



JL-900-909 SERIES



RIGID ALUMINUM GRATINGS FOR HIGH TRAFFIC AREAS

- **Gratings Remove Easily for Cleaning**
- **3/16" Rail Spacing Prevents the Smallest Heel from Catching, yet Allows Dirt and Sand to Collect Below the Surface**
- **6" Keylock Spacing is Quieter and Stronger than 8", 10", Welded or Bolted Systems**
- **Wide Selection of Durable and Colorful Treads**
- **1500 lb. Wheel Load Capacity**

TREAD OPTIONS FOR THE 900 SERIES ALUMINUM GRATINGS

JL-900: Carpet

Rail Finish: Any Color

Frame: 900 Series Frame Options

LEED: 46

JL-901: Vinyl

Rail Finish: Any Color

Frame: 900 Series Frame Options

LEED: 46

JL-902: Serrated Aluminum Surface

Meets NFPA 258 standards, NFPA 253 and FTM Standard 372

Rail Finish: Clear

Frame: 900 Series Frame Options

LEED: 50

JL-903: Abrasive-Coated Aluminum

Rail Finish: Clear only

Frame: 900 Series Frame Options

LEED: 44

JL-904: Abrasive-Coated Vinyl

Rail Finish: Any Color

Frame: 900 Series Frame Options

LEED: 44

JL-905: Tuff Tread

Rail Finish: Any Color

Frame: 900 Series Frame Options

LEED: 46

JL-907: Premium Carpet

Rail Finish: Any Color

Frame: 900 Series Frame Options

LEED: 46

JL-909: Buffed Rubber Inserts

Tread Color: Grey, other colors additional charge

Rail Finish: Any Color

Frame: 900 Series Frame Options

LEED: 15.61

#1 Specify Tread Option

#2 Specify Tread Color from page 8

#3 Specify Rail Finish Color from Rail & Frame Finish Colors

#4 Specify Frame Style from 900 Series Frame Options Chart

#5 Find LEED Rating on page 7

RAIL AND FRAME FINISH COLORS

Mill		Light Bronze	
Clear Anodized		Black	
Dark Bronze		Medium Gold	
Medium Bronze		Champagne	



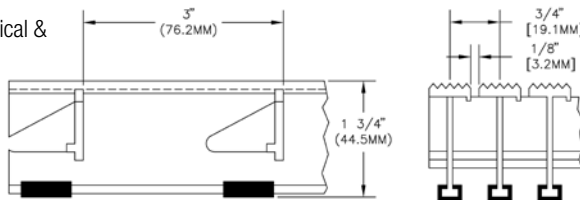
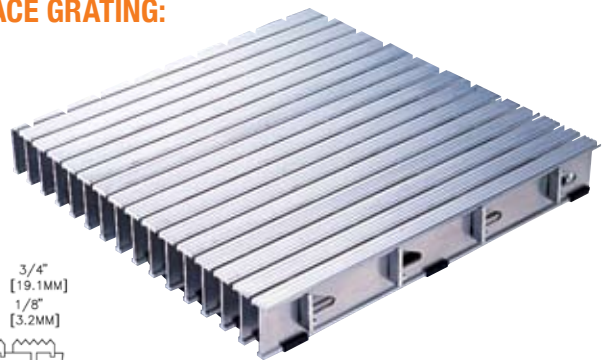
ALUMINUM GRATINGS FOR HIGH TRAFFIC ENTRYWAYS

- Gratings Remove Easily for Cleaning
- 1/8" Rail Spacing Prevents the Smallest Heel from Catching, yet Allows Dirt and Sand to Collect Below the Surface
- Stronger and Quieter than 8" Spacer, Welded or Bolted Systems
- 1500 lb. Wheel Load

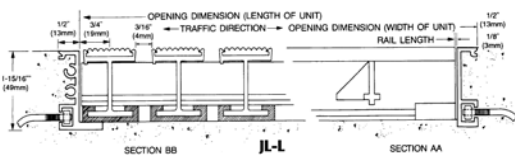
**JL-906S (SERRATED) & JL-906P (SMOOTH) TOP RAIL SURFACE GRATING:
Thin Line 3/4" O.C. Rails**

Extruded full-length serrated tread 5/8" (15.9mm) wide. Keylock bars are spaced 3" (76.2mm) on center with extruded vinyl cushions spaced 24" (609.6 mm) on center. Meets NFPA 258 standards, NFPA 253 and FTM Standard 372.

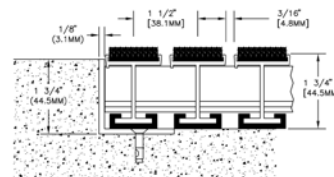
Rail Finish: Mill
Frame: 900 Series Frame Options
LEED: 50
EQ Credit 5: Indoor Chemical & Pollutant Source Control



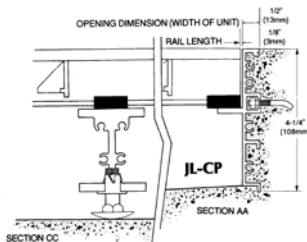
FRAME OPTIONS: 900 Series



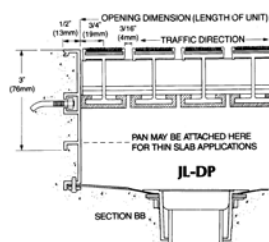
JL-L: Recessed level-bed frame—1500 lbs./ft.² uniform load, 1 15/16" (49.2mm) deep by 1/2" (12.7mm) profile aluminum alloy. Available in any color frame.



JL-LAF: Recessed angle frame—1500 lbs/ftw uniform load, 1-3/4" (44.5mm) deep by 1/8" (3.2mm) profile aluminum extrusion. Available in any color frame.

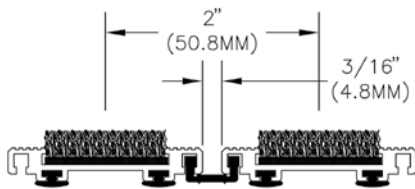


JL-CP: Concrete Pit—recessed pit with adjustable cross-supports 300 lbs./ft.² uniform load (higher loads available), 4-1/4" (108mm) by 1/2" (12.7mm) profile aluminum alloy with adjustable cross-supports 4" O.C.

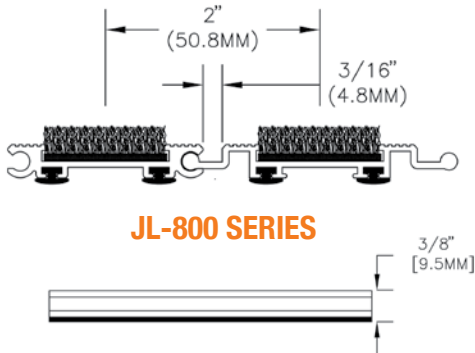


JL-DP JL-CP: Recessed concrete pit frame with aluminum drain pan. 4-1/4" (108mm) by 1/2" (12.7mm) profile aluminum alloy with adjustable cross-supports 4" O.C. Available in any color frame. Drain pan is mill aluminum.

700 & 800 SERIES



JL-700 SERIES



JL-800 SERIES



LOWEST PROFILE ALUMINUM ROLL-UP MAT WITH LOW-NOISE LDPE HINGE DESIGN: 700 SERIES

- Most Economical Entry Mat System
- Recycled LDPE Hinges
- Hinge System Eliminates the Clatter Associated with Metal Hinge Systems
- 350 lb. Uniform Load Capacity
- Any Color Frame and Rail Finish

INTEGRAL ALUMINUM HINGE DESIGN: 800 SERIES

- 3/8" Profile
- Effective for Custom-Fabricated Applications
- Any Color Selection for Rail Tread Finish
- Integral Aluminum Hinge System is More Durable than Plastic Hinge Systems
- 350 lb. Uniform Load Capacity

TREAD INSERT OPTIONS: 700 & 800 Series

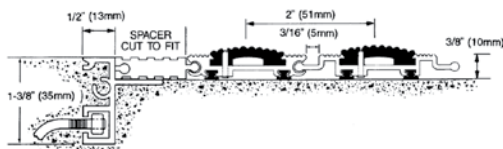
JL-700: Carpet LEED: 50	JL-704: Abrasive-Coated Vinyl LEED: D	JL-801: Vinyl inserts LEED: 37
JL-701: Vinyl LEED: 59	JL-705: Tuff Tread LEED: 50	JL-804: Abrasive-Coated Vinyl LEED: 46
JL-702: Serrated Aluminum Meets NFPA 258 standards, NFPA 253 and FTM Standard 372 LEED: 41.47	JL-707: Premium Carpet LEED: 50	JL-805: Tuff Tread inserts LEED: 49
JL-703: Abrasive-Coated Aluminum LEED: 49	JL-709: Buffed-Rubber LEED: 10	JL-807: Premium Carpet inserts LEED: 49

- #1 Specify Tread Option
- #2 Specify Tread Color from page 8
- #3 Specify Rail Finish Color from Rail and Frame Finish Colors
- #4 Specify Frame Style from 700/800 Series Frame Options Chart
- #5 Find LEED Rating on Page 7

RAIL AND FRAME FINISH COLORS

Mill		Light Bronze	
Clear Anodized		Black	
Dark Bronze		Medium Gold	
Medium Bronze		Champagne	

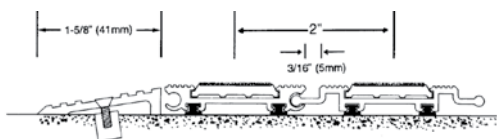
FRAME OPTIONS: 700 & 800 Series



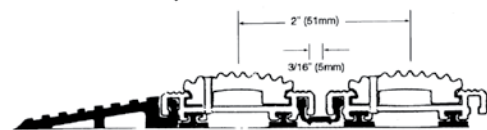
JL-R: Recessed frame that allows the mat to rest flush with the floor surface. 1-3/8" (34.9mm) deep by 1/2" (12.7 mm) profile. Available in any color frame.



JL-TR: Recessed angle frame for butting up to tile or carpet. 7/16" (11.1mm) deep by 1/8" (3.2mm) profile. Available in any color frame.



JL-SA: Surface mounted aluminum frame for permanent installation. 3/8" (9.5mm) deep by 1-5/8" (41.3 mm) wide profile. Serrated aluminum alloy extrusions. Available in any color frame.

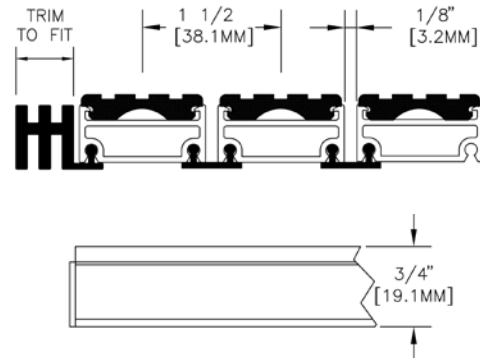


JL-SV: Surface mounted vinyl frame for a moveable installation. 3/8" (9.5 mm) deep by 1-5/8" (41.3 mm) wide profile. Available in Black Serrated flexible black plastic only.



LOW PROFILE ALUMINUM ROLL-UP GRATING FOR HEAVY WHEEL LOADS

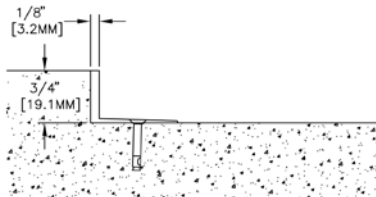
- 3/4" Deep Profile—Ideal for Building Renovations
- Designed for up to 1500 lb. Wheel Loads—Ideal for Heavy Cart Traffic
- LEED 44 Rating On All Models Except 609
- Continuous Bottom Cushions Reduce Noise



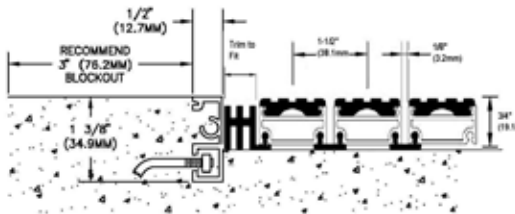
TREAD INSERT OPTIONS:

- JL-600:** Carpet
- JL-601:** Vinyl
- JL-604:** Vinyl-abrasive
- JL-605:** Tuff Tread
- JL-607:** Premium Carpet
- JL-609:** Buffed Rubber Inserts
- Frame:** JL FA Frame Only
- LEED:** 12.66

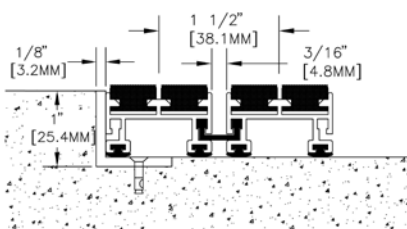
FRAME OPTIONS: 600 Series



JL-AA: Recessed angle frame. 3/4" (25.4mm) deep by 1/8" (3.2mm) wide aluminum extrusion. Available in any color frame.



JL-A: Level bed frame allows grate to rest directly on the recessed concrete. 1-3/8" (34.9 mm) deep by 1/2" (12.7mm) profile. Available in any color frame.



JL-FA: Recessed angle frame for the Model JL609 Buffed Rubber Tread Only. Aluminum frame 1" (25.4mm) deep by 1/8" (3.2mm) wide aluminum alloy extrusion. Available in any color frame.



- #1 Specify Tread Option
- #2 Specify Tread Color from page 8
- #3 Specify Rail Finish Color from Rail & Frame Finish Colors
- #4 Specify Frame Style from 600 Series Frame Options Chart
- #5 Find LEED Rating on page 7

RAIL AND FRAME FINISH COLORS

Mill		Light Bronze	
Clear Anodized		Black	
Dark Bronze		Medium Gold	
Medium Bronze		Champagne	



STAINLESS STEEL GRATING FOR HIGH TRAFFIC ENTRYWAYS

- Resistance-welded .093" Stainless Steel Wire Construction
- .14" (3.6mm) Rail Spacing Allows Water, Snow and Dirt to Fall Through
- #4 Satin Stainless Steel Finish
- Support Bars spaced 1" apart for the Greatest Load Capacity
- 1500 or 2000 lb. Rolling Load
- Designed for Very Heavy Foot or Light Vehicle Traffic
- Anchored by Hidden Lockdowns
- EQ Credit 5: for Indoor Chemical & Pollutant Source Control

TREAD INSERT OPTIONS:

JL-503: 7/16" deep grate

Surface-Mounted Installations: JL38SM frame

Recessed Installations: JL38SS

JL-508: 5/8" deep grate

Recessed Installations: JL-58SS

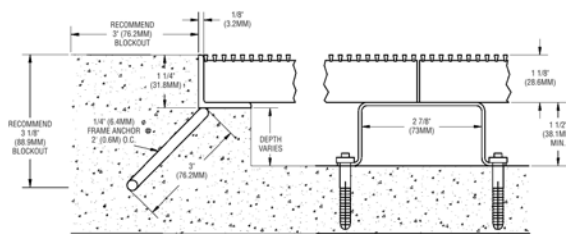
JL-509: 9/8" deep grate

Recessed Installations: JL-98SS

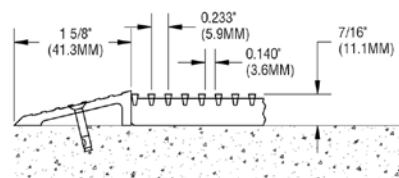
Stainless Steel Deep Pit: JL 98DPSS



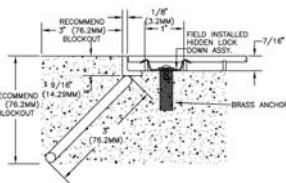
FRAME OPTIONS: 500 Series



Deep Pit Frame: JL98DPSS

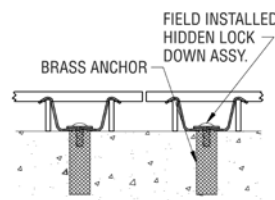


Surface-Mounted Permanent Installation Frame: JL38SM
15/32" (11.9 mm) deep by 1-5/8" (41.3 mm) wide profile. Serrated aluminum extrusion angle.



Stainless Steel Recessed Frame:

JL38SS—7/16" (11.1 mm) deep
JL58SS—5/8" (15.99 mm) deep
JL98SS—9/8" (28.6 mm) deep
Anchored by Hidden Lockdowns



Intermediate Anchoring System
Required for all Models.



LEED™ RELATED DATA

The Leadership in Energy and Environmental Design (LEED) Green Building Rating System™ is the nationally accepted benchmark for the design, construction and operation of high-performance green buildings. LEED gives building owners and operators the tools they need to have an immediate and measurable impact on their buildings' performance. LEED promotes a whole-building approach to sustainability by recognizing performance in five key areas of human and environmental health: sustainable site development, water savings, energy efficiency, materials selection and indoor environmental quality.

LEED: 59

MR Credits 4.1, 4.2: Recycled Content

This model contains a minimum of 59% pre-consumer recycled content. Note that most aluminum has an actual post-consumer recycled content that is much higher, but at this time it is not possible to guarantee post-consumer recycled content for a specific batch or project.

LEED: 50

MR Credits 4.1, 4.2: Recycled Content

This model contains a minimum of 50% pre-consumer recycled content. Note that most aluminum has an actual post-consumer recycled content that is much higher, but at this time it is not possible to guarantee post-consumer recycled content for a specific batch or project.

LEED: 49

MR Credits 4.1, 4.2: Recycled Content

This model contains a minimum of 49% pre-consumer recycled content. Note that most aluminum has an actual post-consumer recycled content that is much higher, but at this time it is not possible to guarantee post-consumer recycled content for a specific batch or project.

LEED: 46

MR Credits 4.1, 4.2: Recycled Content

This model contains a minimum of 46% pre-consumer recycled content. Note that most aluminum has an actual post-consumer recycled content that is much higher, but at this time it is not possible to guarantee post-consumer recycled content for a specific batch or project.

LEED: 44

MR Credits 4.1, 4.2: Recycled Content

This model contains a minimum of 44% pre-consumer recycled content. Note that most aluminum has an actual post-consumer recycled content that is much higher, but at this time it is not possible to guarantee post-consumer recycled content for a specific batch or project.

LEED: 41.47

MR Credits 4.1, 4.2: Recycled Content

This model contains a minimum of 41.47% pre-consumer recycled content. Note that most aluminum has an actual post-consumer recycled content that is much higher, but at this time it is not possible to guarantee post-consumer recycled content for a specific batch or project.

LEED: 37

MR Credits 4.1, 4.2: Recycled Content

This model contains a minimum of 37% pre-consumer recycled content. Note that most aluminum has an actual post-consumer recycled content that is much higher, but at this time it is not possible to guarantee post-consumer recycled content for a specific batch or project.

LEED: 15.61

MR Credits 4.1, 4.2: Recycled Content

This model contains a minimum of 15.61% pre-consumer recycled content. Note that most aluminum has an actual post-consumer recycled content that is much higher, but at this time it is not possible to guarantee post-consumer recycled content for a specific batch or project.

LEED: 12.66

MR Credits 4.1, 4.2: Recycled Content

This model contains a minimum of 12.66% pre-consumer recycled content. Note that most aluminum has an actual post-consumer recycled content that is much higher, but at this time it is not possible to guarantee post-consumer recycled content for a specific batch or project.

LEED: 10

MR Credits 4.1, 4.2: Recycled Content

This model contains a minimum of 10% pre-consumer recycled content. Note that most aluminum has an actual post-consumer recycled content that is much higher, but at this time it is not possible to guarantee post-consumer recycled content for a specific batch or project.

EQ CREDIT 5: Indoor Chemical and Pollutant Source Control

This product is intended for permanent installation. To meet this credit's requirements for an entryway system, size product at least six feet in the traffic direction and maintain the product properly.

WARRANTY:

JL Industries warrants all Floor Gratings, Mats and Frames of the 600, 700, 800 or 900 Series for a period of two years from date of shipment against defects in material or workmanship. The 500 Series products constructed of stainless steel are warranted for five years from date of shipment. In addition to the above, the following Tread Inserts carry a 5 year warranty against defects in material or workmanship, but not wear; Tuff Tread; Premium Carpet, Buffed Rubber. The liability of JL is strictly limited to the repair or replacement of units that, in our opinion, were properly installed and subsequently found defective. No claims for consequential damages of any nature will be allowed. This warranty is in lieu of all other warranties, expressed or implied.

COLOR OPTIONS

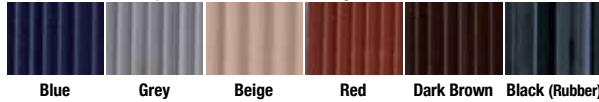


TREAD INSERT STYLES & COLORS

Carpet: 100% nylon fiber, fusion bonded to backing and mechanically secured to tread rails for maximum durability. Meets NFPA 258 and 253 standards, FTM Standard 372 and is Class 2 Fire-rated.



Vinyl: Convex vinyl inserts have full-length serrations for traction. Black is a vulcanized rubber insert.



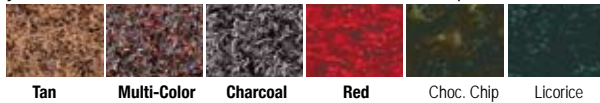
Abrasive-Coated Aluminum Surface: Aluminum treads coated with mineral particles embedded in epoxy coating for the greatest wear and slip resistance.



Abrasive-Coated Vinyl: Aluminum treads coated with mineral particles embedded in epoxy coating for the greatest wear and traction.



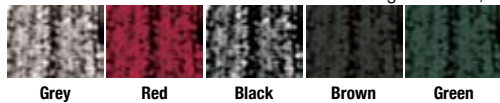
Tuff Tread: Broadloom commercial textile with crimped, Solution-Dyed 600 denier polypropylene fibers tufted into a woven double backing and mechanically secured to tread rails. Greatest resistance to traffic pattern wear.



Premium Carpet Inserts: Highly-absorbent, tufted 100% nylon with a polyester nonwoven primary backing and secondary backing. Meets NFPA 258 and 253 standards, FTM Standard 372, and is Class 1 Fire-rated.



Buffed Rubber Inserts: Two buffed-rubber treads per rail and flexible low-density polyethylene hinge retained in a "captive" aluminum tread port; drain holes allow debris and moisture to flow through the mat; continuous bottom cushions reduce noise.



MANUFACTURING/WAREHOUSING LOCATIONS



ACPG HEADQUARTERS
JL INDUSTRIES
4450 W. 78TH STREET CIRCLE, BLOOMINGTON, MN 55435
PHONE: 800-554-6077 FAX: 952-835-2218
E-MAIL: SALES@JLINDUSTRIES.COM
WEB SITE: WWW.JLINDUSTRIES.COM

ACPG CHICAGO
WAREHOUSE
WOOD DALE, ILLINOIS

ACPG EAST COAST
WAREHOUSE
LANCASTER, PENNSYLVANIA



ACPG WEST COAST
SAMSON PRODUCTS
6285 RANDOLPH STREET, COMMERCE, CA 90040
PHONE: 800-554-6077 FAX: 952-835-2218
E-MAIL: SALES@SAMSONPRODUCTS.COM
WEB SITE: WWW.SAMSONPRODUCTS.COM

ACPG SOUTH
WAREHOUSE
GRAND PRAIRIE, TEXAS

ACPG ATLANTA
WAREHOUSE
ATLANTA, GEORGIA



ACPG SOUTHEAST
THOMAS ENTERPRISES
5765 CORPORATION CIRCLE, FORT MYERS, FL 33905
PHONE: 800-780-7501 FAX: 239-693-7501
E-MAIL: SALES@THOMASE.COM
WEB SITE: WWW.THOMASE.COM

The Activar Construction Products Group (ACPG) consists of 5 affiliated companies that serve the commercial construction industry. Our multiple product lines are a single source for architects and distributors. Air Louvers manufactures products for the openings market with door lites, louvers and rated-glass. Hiawatha is known for its quality architectural door hardware and frameless shower door products. JL Industries is an industry leader in fire protection, providing fire extinguishers, AEDs and cabinets, access panels, roof opening products and entrance flooring systems. Samson Products manufactures many of the products sold under the JL label and distributes JL products on the West Coast. Thomas Enterprises is our Southeast Warehouse distributor for JL products and has a state-of-the-art aluminum fabrication facility for fire extinguisher cabinets sold under the Thomas and JL labels.