



**JL INDUSTRIES**

**ROOF ACCESSORIES**



**Division 07 72 33**

**Roof Hatches  
Roof Safety Rails  
Safety Posts**

**Division 07 72 36**

**Smoke Vents**

**ACTIVAR**  
INC.

[www.activar.com](http://www.activar.com)

**Construction Products Group**



# ROOF HATCHES & SAFETY RAILINGS

## ROOF HATCH: Galvanized Steel or Aluminum RHG & RHA Series



**Certifications:** **RHG** (galvanized) models include components or materials that are ASTM certified under Specifications A792/A792M-06a; A653/A653M-06a; C726-05; and A36/A36M-05. **RHA** (aluminum) models include components or materials that are ASTM certified under Specifications 209-06 and C726-05.

**Load/Deflection:** Both steel and aluminum roof hatch covers have been tested and approved to support a minimum live load of 40 lbs./ft.<sup>2</sup> with a maximum deflection of 1/150<sup>th</sup> of the span, maximum negative load of 50 lbs./ft.<sup>2</sup> wind uplift, and 110 mph wind load when cover is in an open position.

**Insulation:** The curb includes a 1" fiberboard insulation surrounding the base, and 1" mineral wool insulation between the exterior cover and liner.

**Construction:** **RHG:** 14 gauge galvanized steel with 12" high curb and 3 5/8" wide flange for securing to roof deck. The cover includes a 14 gauge galvanized steel exterior and 22 gauge liner with with a TPE draft seal gasket door seal. **RHA:** .090 aluminum with 12" high curb and 3 5/8" wide flange for securing to roof deck. The cover includes a .090 aluminum exterior and .040 aluminum liner with a TPE draft seal gasket door seal.

**Hardware:** Hardware includes a heavy duty hinge, slam latch, heavy gauge automatic hold open arm with red grip, compression spring-operated cylinder, exterior handle with integral padlock hasp, and interior locking handle with interior padlock hasp.

**Finish:** **RHG:** Bonderite®, pre-treated grey hammertone powder coat. **RHA:** Bonderite®, pre-treated bronze powder coat.

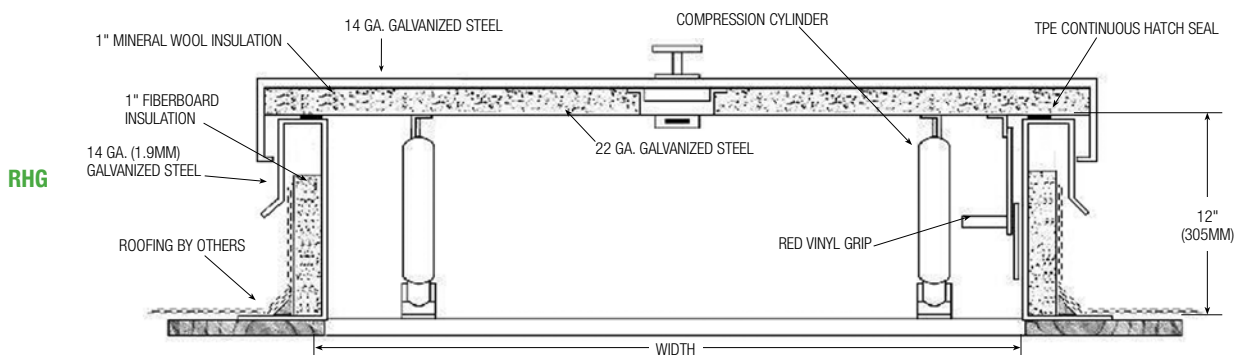
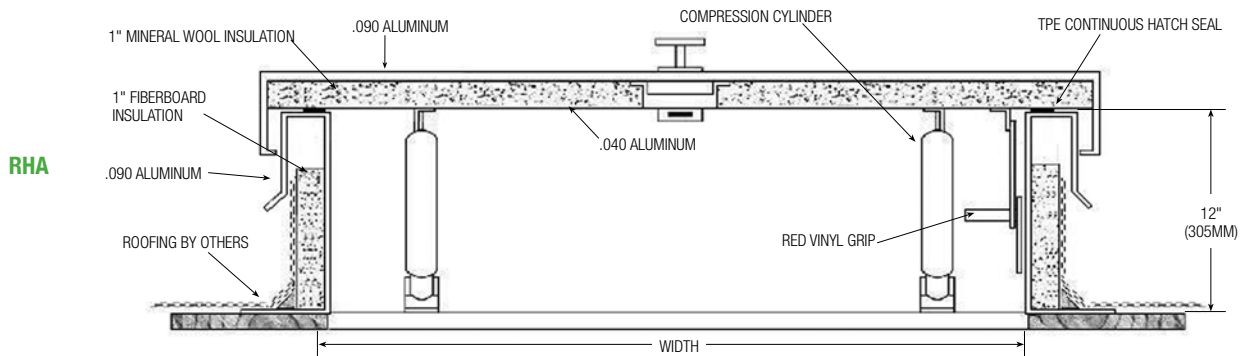
**Options:** Saf-T-Hatch Safety Railing, Gravity-operated battery-powered flashing warning light, LP-4,5 or 6 ladder post.

Model	Opening Size	Weight
RHA-1	30" x 36"	90 lbs.
RHA-2	54" x 30"	115 lbs.
RHA-3	96" x 30"	190 lbs.
RHA-4	36" x 36"	110 lbs.
RHA-5	48" x 48"	160 lbs.

Custom Sizes Available Upon Request

Model	Opening Size	Weight
RHG-1	30" x 36"	150 lbs.
RHG-2	54" x 30"	210 lbs.
RHG-3	96" x 30"	315 lbs.
RHG-4	36" x 36"	185 lbs.
RHG-5	48" x 48"	260 lbs.

Custom Sizes Available Upon Request





## RETROFIT GALVANIZED ROOF HATCH: RHR Series



RHR-1

**Load/Deflection:** Roof hatch cover has been tested and approved to support a minimum live load or 40 lbs/ft<sup>2</sup> with a maximum deflection of 1/150th of the span.

**Insulation:** The curb includes 1" x 11" pine board surrounding the base. The cover has 1" mineral wool insulation in the space between the exterior cover and liner.

**Certifications:** The RHR includes components or materials that are ASTM certified under Specifications A792/A792M-06a; A653/A653M-06a; C726-05; and A36/A36M-05.

**Construction:** Hatch is 16 gauge galvanized steel with 12" high curb and 3-5/8" wide flange for securing to roof deck. The cover includes a 16 gauge galvanized steel exterior and 22 gauge liner with an EPDM gasket door seal.

**Hardware:** Hardware includes a heavy-duty hinge, heavy-gauge automatic hold-open arm with red grip, compression spring-operated cylinders, rubber-coated exterior handle with integral padlock hasp and interior latching handle with padlock hasp.

**Finish:** Bonderite™ red powder coat.

**Options:** Gravity-operated battery-powered flashing warning light, Saf-T-Hatch safety rail (STH-1).

Model	Opening Size	Weight
RHR-1	30" x 36"	137 lbs.
Custom Sizes Available Upon Request		

- Economical Roof Hatch Replacement
- 16 Gauge Galvanized Steel Construction
- RHG Series Features & Hardware
- Meets Industry Test Standards
- Bonderite™ Pre-Treated Red Hammertone powder coat
- No Painting Necessary
- Ready for Installation
- Custom Sizes Available

## SAF-T-HATCH ROOFTOP SAFETY RAILING FOR NEW & EXISTING HATCHES: STH Series (Patented Saf-T-Hatch Railing)



**Certifications:** Meets OSHA required compliance for safe egress and ingress through rooftop hatch openings while hatch is in use. Complies with OSHA CFR 29-1910.232 and CFR 29-1910.27.

**Construction:** Rail: 1-5/8" OD A53 grade B seamed galvanized steel with zinc-plated post caps. The base is factory galvanized 2" x 2" 16 gauge seamed steel with cast steel hot dipped galvanized clamps.

**Guard:** Zinc-plated 3/16" ASTM chain with quick links and hoops.

**Finish:** Safety Yellow Powder Coating.

**Installation:** Quickly installs by a clamping frame around curb base of roof hatch or fire hatch. Does not require "approved" installer. Fits all brands of existing roof hatches with cap flashing—field adjustable to fit flashing size.

**Options:** Self-closing, rigid steel gate painted safety yellow, - STHG-24 fits RH1,2,3 Models (17 lbs) and STHG-36 fits RH4 & 5 Models (20 lbs).

Model	Opening Size	Weight	Fits Roof Hatch Model
STH-1	30" x 36"	66 lbs.	RHA/RHG/RHR-1
STH-2	54" x 30"	70 lbs.	RHA/RHG-2
STH-3	96" x 30"	80 lbs.	RHA/RHG-3
STH-4	36" x 36"	68 lbs.	RHA/RHG-4
STH-5	48" x 48"	75 lbs.	RHA/RHG-5
Custom Sizes Available Upon Request			

# ROOF HATCHES & SAFETY RAILINGS

## SAF-T-HATCH RAIL SYSTEM: RHG-STH Series JL RHG Series Roof Hatch with Safety Rail



RHG-1-STH

- Integral Roof Access Safety System
- OSHA-Compliant for Rooftop Safety
- 4 Standard Sizes - Custom Sizes Available
- Durable, Powder Coat Factory Finish
- No Painting Required - Installation Ready
- Safety Rail Assembles Easily in Minutes
- Assembly Tools & Hardware Included
- Roof Hatch with Railing Sold as One Unit
- Optional Gate & "Open Hatch" Warning Light
- Factory-installed Mounting Brackets

### SAFETY RAIL: Model STH

**Certifications:** Rail meets OSHA-required compliance for safe egress and ingress through rooftop hatch openings while hatch is in use. Complies with OSHA CFR 29-1910.232 and CFR 29-1910.27.

**Construction:** Rail is 1-5/8" OD A53 grade B seamed galvanized steel with zinc-plated post caps. Rail support brackets are welded to the curb. Posts are mechanically-secured to the brackets.

**Hardware:** Safety chain is zinc-plated 3/16" ASTM chain with quick links and hoops.

**Finish:** Durable Safety Yellow powder coat finish.

**Options:** Rigid galvanized self-closing gate. Gravity-operated Roof Hatch "Open" warning light.

### GALVANIZED ROOF HATCH: Model RHG

**Certifications:** RHG models include components or materials that are ASTM certified under Specifications A792/A792M-06a; A653/A653M-06a; C726-05 and A36/A36M-05)

**Load/Deflection:** Roof hatch cover has been tested and approved to support a minimum live load or 40 lbs/ft<sup>2</sup> with a maximum deflection of 1/150<sup>th</sup> of the span, maximum negative load of 50 lbs/ft<sup>2</sup> wind uplift, and 110 mph wind load when cover is in upright position.

**Insulation:** The curb includes 1" fiberboard insulation surrounding the base. The cover has 1" fiberglass insulation in the space between the exterior cover and liner.

**Construction:** Hatch is 14 gauge galvanized steel with 12" high curb and 3 5/8" wide flange for securing to roof deck. The cover includes a 14 gauge galvanized steel exterior and 22 gauge liner with an EPDM gasket door seal.

**Hardware:** Hardware includes a heavy-duty hinge, heavy-gauge automatic hold-open arm with red grip, compression-operated shock-absorbing cylinders, exterior handle with integral padlock hasp and interior latching handle with padlock hasp. Pre-installed bolts on the counter flashing assist in retaining the membrane materials against the curb.

**Finish:** Hatch - Bonderite™ pre-treated gray hammertone powder coat.

**Options:** Gravity-operated battery-powered flashing warning light.

Model	Opening Size	Weight
RHG-1-STH	30" x 36"	183 lbs.
RHG-2-STH	54" x 30"	245 lbs.
RHG-4-STH	36" x 36"	219 lbs.
RHG-5-STH	48" x 48"	298 lbs.
Custom Sizes Available Upon Request		



## DOUBLE LEAF SMOKE VENT: UFV Series UL-LISTED

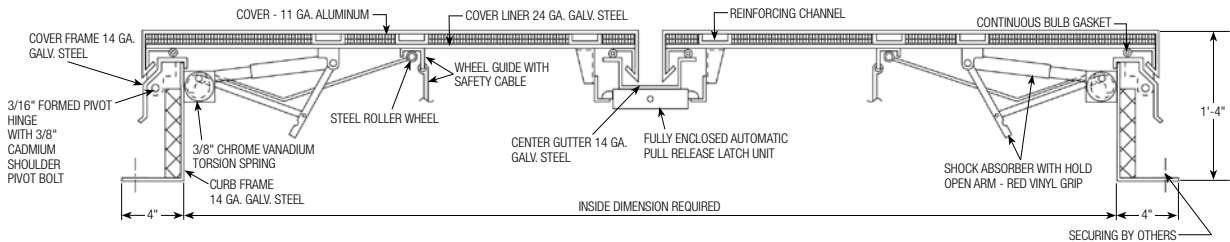
**Certifications:** UL Listed. The smoke vents are equipped with a UL listed 165° F fusible link for automatic operation.

**Construction:** Covers are 11 gauge aluminum insulated with fiberglass, 14 gauge galvanized steel curb and curb frame fully welded and ground smooth, gasketed and insulated for weather tightness.

**Operation:** Torsion spring drives open the covers automatically. Shock absorbers control the speed of the leaves as they open. The fusible link can be quickly and easily replaced.

**Hardware:** Heavy gauge aluminum 3/16" pivot hinges. Pull handles are provided for exterior or interior manual operation.

**Finish:** 2 coats of factory-applied primer.



Clear Opening Size	48" x 48"	48" x 72"	48" x 90"	48" x 96"	60" x 60"	60" x 96"			
UL-Listed	UFV-1	UFV-2	UFV-3	UFV-4	UFV-5	UFV-6			
Custom Sizes Available Upon Request • Fusible Links with Higher Temperature UL-Listings Available Upon Request									

## DOUBLE LEAF DOMED SMOKE VENT: FDFV Series

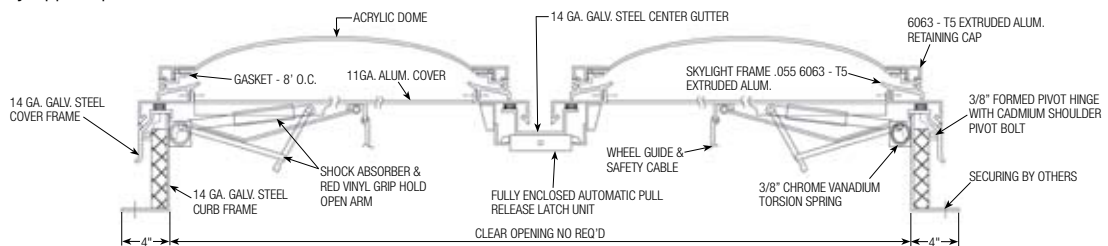
**Certifications:** FM Approved. The smoke vents are equipped with a UL listed 165° F fusible link for automatic operation.

**Construction:** Dome frame is a minimum thickness of .072 aluminum and provides a self-contained sloping condensation and weepage gutter for drainage. Covers are one-piece acrylic dome (either white translucent or clear). The 14 gauge galvanized steel dome retaining frame is secured to the 14 gauge galvanized steel curb frame. The galvanized steel curb and curb frame are fully welded and ground smooth, gasketed and, insulated for weather tightness.

**Operation:** Torsion spring drives open the covers automatically. Shock absorbers control the speed of the leaves as they open. The fusible link can be quickly and easily reset and a new link inserted.

**Hardware:** Heavy gauge aluminum 3/16" pivot hinges. Pull handles are provided for exterior or interior manual operation.

**Finish:** 2 coats of factory-applied primer.



Clear Opening Size	48" x 48"	48" x 72"	48" x 90"	48" x 96"	60" x 60"	60" x 96"			
UL LISTED	UDFV-1	UDFV-2	UDFV-3	UDFV-4	UDFV-5	UDFV-6			
Custom Sizes Available Upon Request • Fusible Links with Higher Temperature UL-Listings Available Upon Request									

# EQUIPMENT HATCHES



## EQUIPMENT HATCH: EHA & EHG Series

**Insulation:** The lid has 1" fiberglass insulation in the space between the exterior cover and liner.

**Construction:** Hatch is 14 gauge galvanized steel (EHG) or .090 aluminum (EHA) fully welded and ground smooth for weather tightness. Includes 12" high curb and 4" wide flange for securing to roof deck. The cover includes a 14 gauge galvanized steel or .090 aluminum exterior and metal liner with a

continuous bulb-neoprene door seal. Oversize doors may be spliced.

**Hardware:** Hardware includes heavy-duty galvanized hinges, compression spring automatic hold-open and operating arms with red vinyl handlegrip. For models 7' or larger - adjustable torsion spring automatic hold-open is provided. Lid hardware has a 2 point universal spring latch, and exterior and interior handles with integral padlock.

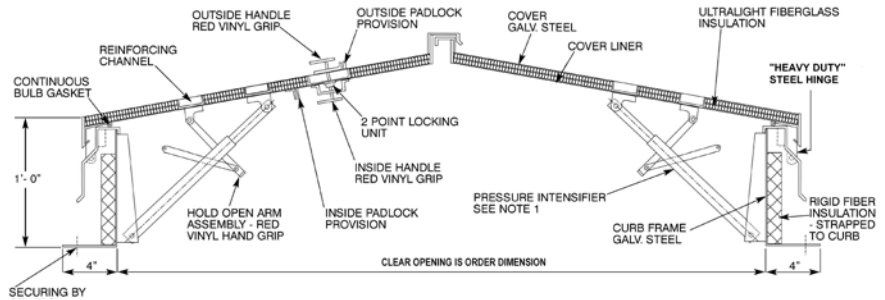
**Finish:** 2 coats prime coat.

**Options:** White Dome, Clear Dome. (RHWL) Gravity-operated battery-powered flashing warning light. (STH) Saf-T-Hatch railing. Custom Sizes & Finishes Available - Consult Factory.



Clear Opening Size	72" X 96"	60" X 120"	120" X 120"	144" X 144"
Aluminum	EHA-1	EHA-2	EHA-3	EHA-4
Galvanized	EHG-1	EHG-2	EHG-3	EHG-4

Custom Sizes Available Upon Request



## DOMED EQUIPMENT HATCHES - DEHG & DEHA Series

**Insulation:** The lid has 1" fiberglass insulation in the space between the exterior cover and liner.

**Construction:** Curb and curb frame are 14 gauge galvanized steel or .090 aluminum, fully welded and ground smooth for weather tightness. Includes 12" high curb with rigid insulation and 4" wide flange for securing to roof deck. The lid includes a one piece dome (or multiples) of either white

translucent or clear colorless acrylic, a dome frame of extruded aluminum #6063-T5 with minimum thickness of .070 provided with a self-contained sloping condensation and weepage gutter for drainage. Lid construction is galva-nized steel or aluminum exterior with metal liner and continuous bulb gasket door seal. Oversize doors may be spliced.

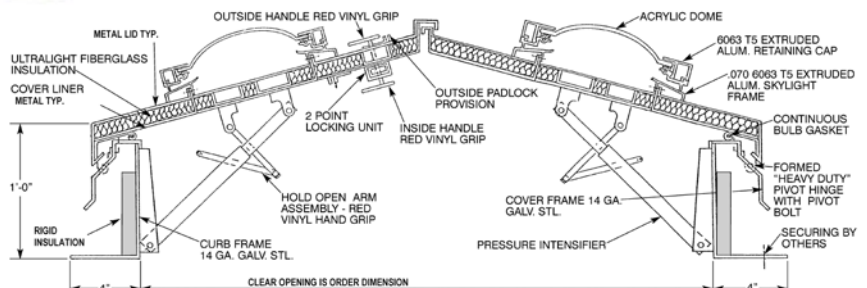
**Hardware:** Hardware includes heavy-duty galvanized hinges, compression spring automatic hold-open and operating arms with red vinyl handlegrip. For models 7' or larger - adjustable torsion spring automatic hold-open is provided. Lid hardware has a 2 point universal spring latch, and exterior and interior handles with integral padlock.

**Finish:** 2 coats prime coat.  
**Options:** White Dome, Clear Dome. (RHWL) Gravity-operated battery-powered flashing warning light. (STH) Saf-T-Hatch railing. Custom Sizes & Finishes Available - Consult Factory



Clear Opening Size	72" X 96"	60" X 120"	120" X 120"	144" X 144"
Aluminum	DEHG-1	DEHG-2	DEHG-3	DEHG-4
Galvanized	DEHA-1	DEHA-2	DEHA-3	DEHA-4

Custom Sizes Available Upon Request





# ACCESSORIES



## OPTIONAL GATE FOR SAF-T-HATCH RAILINGS: STHG

Increase rooftop safety with a self-closing, rigid galvanized steel gate with spring hinge for JL's Saf-T-Hatch railings. Fits both stand-alone STH and integrated RHG-STH models. Safety yellow painted. Galvanized steel clamps.

Saf-T-Hatch	Gate	Weight
STH-1	STHG-24	17 lbs.
STH-2	STHG-24	17 lbs.
STH-3	STHG-24	17 lbs.
STH-4	STHG-36	20 lbs.
STH-5	STHG-36	20 lbs.

Custom Sizes Available Upon Request



## ROOF HATCH WARNING LIGHT – RHWL

The warning light is designed to alert personnel that the roof top opening or hatch is in the open position. A very bright, red, xenon strobe light emitting 60 double flashes per minute is activated as soon as the hatch is lifted upward 30 degrees. The strobe automatically turns "Off" when the hatch is in the closed position. Installation & Operation: Mounted on the inside surface of the hatch with its magnetic base, the Model RHM-2P-R-S features a built-in tilt switch that is located in its battery compartment. This switch automatically triggers the strobe to its flashing mode when the hatch is lifted upward. Two (2) new D-Cell alkaline batteries provide 50-60 flashing hours. The "Hatch Alert" is not intended to replace roof top safety initiatives or Saf-T-Hatch rail systems but rather to be used in conjunction with them. The flashing signal is an additional alert that the hatch is open.



**WARRANTY**—All products carry a one year warranty after date of shipment against defects in materials and workmanship. We will replace or repair any product found defective within this period at our discretion. No other warranty express or implied is valid.

## MANUFACTURING/WAREHOUSING LOCATIONS

**VISA** **MasterCard**

**ACPG WEST COAST WAREHOUSE**  
RENTON, WASHINGTON

**ACPG HEADQUARTERS**  
JL INDUSTRIES  
4450 W. 78<sup>TH</sup> STREET CIRCLE, BLOOMINGTON, MN 55435  
PHONE: 800-554-6077 FAX: 952-835-2218  
E-MAIL: SALES@JLINDUSTRIES.COM  
WEB SITE: WWW.JLINDUSTRIES.COM

**ACPG CHICAGO WAREHOUSE**  
WOOD DALE, ILLINOIS

**ACPG EAST COAST WAREHOUSE**  
LANCASTER, PENNSYLVANIA

**ACPG ATLANTA WAREHOUSE**  
ATLANTA, GEORGIA

**ACPG SOUTH WAREHOUSE**  
GRAND PRAIRIE, TEXAS

**ACPG WEST COAST SAMSON PRODUCTS**  
6285 RANDOLPH STREET, COMMERCE, CA 90040  
PHONE: 800-554-6077 FAX: 952-835-2218  
E-MAIL: SALES@SAMSONPRODUCTS.COM  
WEB SITE: WWW.SAMSONPRODUCTS.COM

**ACPG SOUTHEAST THOMAS ENTERPRISES**  
5765 CORPORATION CIRCLE, FORT MYERS, FL 33905  
PHONE: 800-780-7501 FAX: 239-693-7501  
E-MAIL: SALES@THOMASE.COM  
WEB SITE: WWW.THOMASE.COM

The Activar Construction Products Group (ACPG) consists of 5 affiliated companies that serve the commercial construction industry. Our multiple product lines are a single source for architects and distributors. Air Louvers manufactures products for the openings market with door lites, louvers and rated-glass. Hiawatha is known for its quality architectural door hardware and frameless shower door products. JL Industries is an industry leader in fire protection, providing fire extinguishers, AEDs and cabinets, access panels, roof opening products and entrance flooring systems. Samson Products manufactures many of the products sold under the JL label and distributes JL products on the West Coast. Thomas Enterprises is our Southeast distributor for JL products and has a state-of-the-art aluminum fabrication facility for fire extinguisher cabinets sold under the Thomas and JL labels.