

FIRE PROTECTION CABINET OPTIONS - Handles

STANDARD PULL HANDLE:

Our Standard square handles are 4" CTC and come in a variety of finishes to match the cabinet material.

- **Zinc:** Standard on most cabinets. (PUS)
- **Chrome:** Zinc pull with chrome finish. Option on most cabinets. (PUCH)
- **Brass:** Zinc pull painted to match brass cabinets.
- **Bronze:** Zinc pull painted to match bronze cabinets.
- **US10B:** Zinc pull painted to match US10B finish on cabinets.



FLUSH PULL HANDLE - PRH:

Plastic recessed cup-type handle. Standard on all 4" trim cabinets. Available at additional cost as an option on most cabinets. When the recessed pull is installed on cabinets with vertical duo door, the window will be on the right-hand side of the cabinet instead of the left, and when installed in a full glass door, the glass size is smaller than with a standard pull. When ordered with a SAF-T-LOK™, the pull is centered top to bottom of the door, to the right of the lock.



FUTURA CAST FIRE HANDLE:

Cast aluminum. Available at additional cost as an option on most cabinets.

- Mill Finish (PUF)
- Red Painted (PUFR)
- White Painted (PUFW)



CHROME LEVER HANDLE - LH:

Available at additional cost as an option on cabinets without the Saf-T-Lok option..



9702 Newton Ave S. Bloomington, MN 55431 | Many Locations Nationwide

© 2020 Activar Construction Products Group, Inc.

DEC 2020

FIRE PROTECTION CABINET OPTIONS - Locks & Catches

LOCKS:

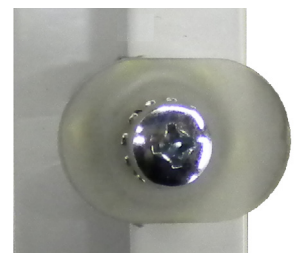
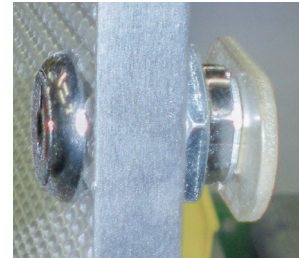
SAF-T-LOK™:

Standard lock for most locking cabinets. Theft-deterrent feature with keyed cylinder lock available on most cabinets. Can be used instead of break glass lock lever. In the panic of a fire emergency, the breaking of the glass in a fire extinguisher cabinet door can be dangerous. It creates the possibility of injury to people and serious liability to the building owner.

Cabinets with a SAF-T-LOK™ lock appear to be locked and in fact are, but the door can be opened with a sharp pull which breaks the replaceable plastic cam. This deters theft and vandalism which occur from unlocked cabinets and allows quick access to the extinguisher.

Although the door appears locked, the plastic cams are designed to flex or break when door is pulled open sharply. Cams can easily be replaced with a Phillips head screwdriver. Plastic cam is 1-5/8" x 1" x 3/32". Extra or replacement cams can be ordered.

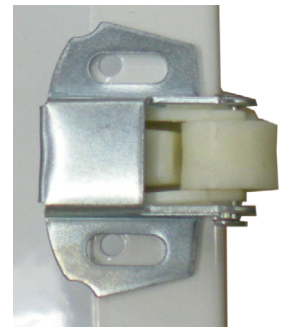
The SAF-T-LOK™ cam lock is centered top to bottom on the cabinet door, and can be installed on most door styles with the glazing option you select. Pull handles are installed 3-5/8" inches higher when a SAF-T-LOK™ is installed in your cabinet, except for the ADA recessed pull which is installed to the right of the lock.



CATCHES:

ROLLER CATCH:

Standard on cabinets without a lock. Spring-loaded nylon roller attaches to cabinet with pair of pan head phillips screws.



MAGNETIC CATCH (MC):

Available at additional cost as an option on most cabinets.

The magnetic catch is an exclusive option and cannot be combined with either Saf-T-Lok™ or standard roller latch. This option is installed on the door, requires 5 lbs of force to operate and is available only on steel cabinets. Not available as a stock item. For Ambassador, Crownline, Clear Vu, 3600 Blanket & FE, 1400 AED, 1900 AED & O2, School.



ACTIVAR
CONSTRUCTION PRODUCTS GROUP INC.



800-554-6077
sales@activarcpg.com
www.activarcpg.com

9702 Newton Ave S. Bloomington, MN 55431 | Many Locations Nationwide