

**ENTRANCE MAT - Activ-Mat™ EM800 Series with EFRT8 Frame - Aluminum Mat with Recessed Threshold Frame**

**SPECIFICATIONS:**

**Aluminium Roll-Up Entrance Mat with Aluminum Hinges**

**Material:** 6063-T6 extruded aluminum alloy tread rails and frames.

**Depth:** 3/8" (9.5 mm).

**Standard Finish:** Mill.

**Tread Spacing:** 2" (50.8 mm) on center with 6 treads per foot in the direction of travel.

**Spacing Between Rails:** Heelproof spacing of 3/16"

**Rolling Wheel Load Rating:** 350 lbs

**NOTE:**

Verify traffic direction - traffic to run perpendicular to rails.

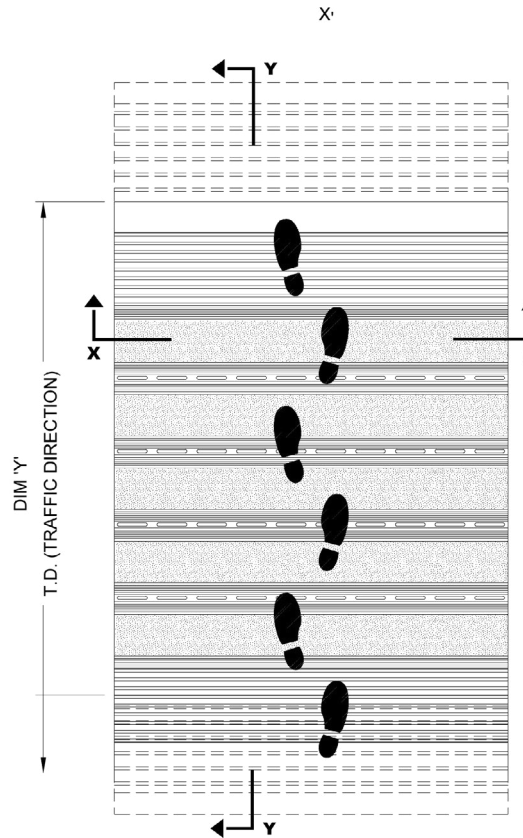
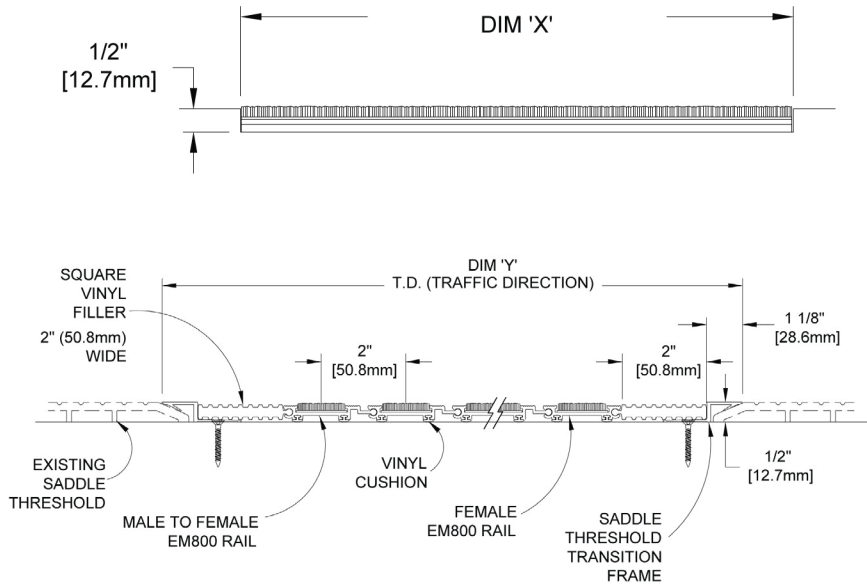
Maximum single section size not to exceed 12'-0" (3.66m) in width (dim "x") or 100 sq. ft.

If multiple sections, verify sectioning does not occur in traffic path.

Vinyl filler to be trimmed in field for tight fit

Mat dimensions allow for clearance between mat section(s) and frame(s) in width (dim "x").

Additional product information including installation instructions may be found at [www.activarcpg.com/jl-industries](http://www.activarcpg.com/jl-industries)



**ACTIV-MAT 800 SERIES INSERTS**



QTY	LOCATION	DIMENSION "X" Width	DIMENSION "Y" Length	FINISH	TREAD OPTIONS	TREAD COLOR	NOTES

**ACTIVAR INC.**  
CONSTRUCTION PRODUCTS GROUP

9702 Newton Ave S. Bloomington, MN 55431 | Many Locations Nationwide

800-554-6077 952-835-2218 sales@activarcpg.com www.activarcpg.com



JLI INDUSTRIES

Distributor:	Project:
Contractor:	Approved By:
Date:	Architect:
Scale: N/A	Pages: 1 of 1
Item #:	

THE INFORMATION CONTAINED IN THIS DRAWING IS THE SOLE PROPERTY OF ACTIVAR CONSTRUCTION PRODUCTS GROUP, INC. ANY REPRODUCTION IN PART OR AS A WHOLE WITHOUT THE WRITTEN PERMISSION OF ACTIVAR CONSTRUCTION PRODUCTS GROUP, INC. IS PROHIBITED.

REV A - DEC - 2018