

# SUBMITTAL: ACADEMY ALUMINUM FX2™ FIRE-RATED EXTINGUISHER CABINETS

The Academy Series Features Aluminum Trim and Door, with 10 Door Styles & Optional Anodized Colors.

**Door & Trim Construction:** Clear anodized aluminum. Flush cabinet doors with a 5/8" door stop are attached by a continuous hinge and equipped with zinc-plated handle and roller catch. All models have 1-3/4" wide trim on frame and 1-1/4" trim on doors with glazing. Rolled edge models are constructed of mechanically-joined extrusions, except for models 1827 and 1027 which are die formed. *Die formed corners provide an attractive, rounded edge - unique to the JL line of cabinets!*

**Trim Style & Depth:** *Recessed* 3/8" flat trim, *Semi Recessed* - 1-1/4", 1-1/2" Square Edge or 2-1/2", 3", 4", 4-1/2" Rolled Edge (4" has recessed FLUSH pull).

**Tub:** The tub is constructed of cold rolled steel with white powder-coat finish standard. Tub forms a flange to cover cut edges of wallboard material. Fire-resistant material is attached to the exterior of the tub. **Please note that dimensions for wall opening have changed. See Chart on pg 2.**

**Fire-Rating:** Fire-FX2™ cabinets are fabricated in accordance with the UL label for one and two hour combustible and non-combustible wall system building codes. The fire testing has met the requirement of ANSI/UL 1479 (ASTM -E814) and ULC/CAN S115 for membrane and penetration firestops. Installation instructions must be strictly adhered to in order to obtain the fire rating.



**8125D10FX2**  
Flat Trim  
Semi-Recessed



**1827G10FX2**  
3" Rolled Edge Trim  
Semi-Recessed  
With Saf-T-Lok™  
Unique Die Formed  
Rolled Corners!

**STEP 1: SELECT MODEL NUMBER AND QUANTITY ON CHART** (refer to chart on pg 2)

A. Determine Trim Style according to wall depth. B. Determine Tub I.D. according to size most suited for extinguisher and wall opening.

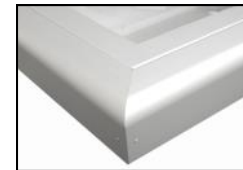
**STEP 2: SELECT DOOR STYLE WITH HANDLE**

Check one box below Examples on Page 2

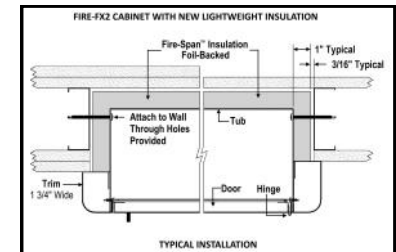
- |   |   |
|---|---|
| <input type="checkbox"/> <b>F</b> Full Glazing                          | <input type="checkbox"/> <b>L22</b> Solid with SAF-T-LOK™                     |
| <input type="checkbox"/> <b>G</b> Full Glazing with SAF-T-LOK™          | <input type="checkbox"/> <b>L24</b> Sold with Cylinder Lock - No Handle       |
| <input type="checkbox"/> <b>D</b> Horizontal Duo Panel                  | <input type="checkbox"/> <b>V</b> Vertical Duo                                |
| <input type="checkbox"/> <b>E</b> Horizontal Dual Panel with SAF-T-LOK™ | <input type="checkbox"/> <b>W</b> Vertical Duo with SAF-T-LOK™                |
| <input type="checkbox"/> <b>S21</b> Solid Door                          | <input type="checkbox"/> <b>B</b> Solid with 2" x 4" View Window & SAF-T-LOK™ |



**Formed Rolled Edge**  
1027 and 1827



**Extruded Rolled Edge**  
2-1/2", 4" and 4-1/2"



**STEP 3: SELECT DOOR GLAZING**

(Check one box below)

- |  |   |   |
|--|---|---|
| <input type="checkbox"/> <b>10</b> Clear Acrylic                     | <input type="checkbox"/> <b>15</b> Bronze Acrylic | <input type="checkbox"/> <b>17</b> Clear Tempered Glass   |
| <input type="checkbox"/> <b>13</b> Clear Wire Glass with Safety Film | <input type="checkbox"/> <b>16</b> Gray Acrylic   | <input type="checkbox"/> <b>18</b> Laminated Safety Glass |

**STEP 4: OPTIONAL FEATURES AT ADDED COST (SELECT ANY)**

- |  |  |  |  |
|--|--|--|--|
| <input type="checkbox"/> Optional Tub Color: ___ Black ___ Red                       | <input type="checkbox"/> Black Vertical FE Letters <b>LDCVBF</b> E   | <input type="checkbox"/> Black Vertical Decal <b>LDVBF</b> E   | <input type="checkbox"/> <b>(CA)</b> Commander Alarm   |
| <input type="checkbox"/> Futura "Fire" Pull ___ Mill Alum ___ Red ___ White          | <input type="checkbox"/> Red Vertical FE Letters <b>LDCVRF</b> E     | <input type="checkbox"/> Red Vertical Decal <b>LDVRF</b> E     | <input type="checkbox"/> <b>(BA)</b> Brigadier Alarm   |
| <input type="checkbox"/> Flush Pull Handle   | <input type="checkbox"/> White Vertical FE Letters <b>LDCVWF</b> E   | <input type="checkbox"/> White Vertical Decal <b>LDVWF</b> E   | <input type="checkbox"/> Etched Lettering in Glass or Engraved Lettering on Metal<br>(Separate submittal needed for special lettering) |
| <input type="checkbox"/> Polished Chrome Handle ( <b>PUCH</b> )                      | <input type="checkbox"/> Black Horizontal FE Letters <b>LDCHBF</b> E | <input type="checkbox"/> Black Horizontal Decal <b>LDHBF</b> E | <input type="checkbox"/> <b>Powder Coat Paint</b> ___ White ___ Bronze ___ Other Code  |
| <input type="checkbox"/> <u>Optional Anodized Color Finish:</u> (with matching pull) | <input type="checkbox"/> Red Horizontal FE Letters <b>LDCHRF</b> E   | <input type="checkbox"/> Red Horizontal Decal <b>LDHRF</b> E   | <a href="#">Decals/Die Cuts &amp; Wall Signs.</a> <a href="#">More Alarm Information</a>   |
| ___ Dark Bronze  | <input type="checkbox"/> White Horizontal FE Letters <b>LDCHWF</b> E | <input type="checkbox"/> White Horizontal Decal <b>LDHWF</b> E |  |

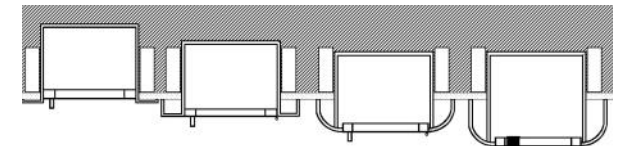
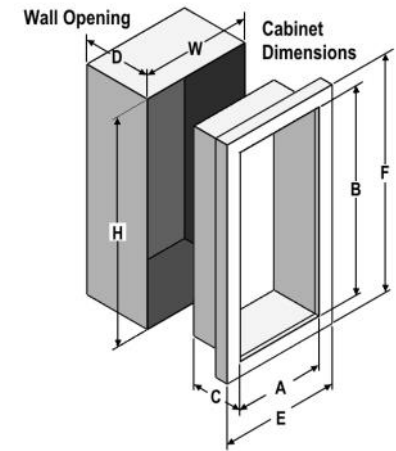
<p><b>ACTIVAR INC.</b> CONSTRUCTION PRODUCTS GROUP</p> <p>ACADEMY, FX2 AND SAF-T-LOK ARE TRADEMARKS OF ACPG PLEASE DOWNLOAD THE MOST CURRENT SUBMITTAL FROM WEBSITE BEFORE ORDERING</p>	Distributor:	Quantity:
	Contractor:	Approved By:
	Model #:	Architect:
	Project:	Date:
<b>HEADQUARTERS:</b> 9702 NEWTON AV S, BLOOMINGTON, MN 55431 <b>PH:</b> 800-554-6077 <b>FAX:</b> 952-835-2218 <b>EMAIL:</b> SALES@ACTIVARCPG.COM WWW.ACTIVARCPG.COM <b>MANUFACTURING:</b> BLOOMINGTON MN & COMMERCE, CA • <b>WAREHOUSES:</b> FT MYERS FL, ATLANTA GA, DALLAS TX, SEATTLE WA, LANCASTER PA, FARGO ND, OMAHA NE 3/20/2019		

**SUBMITTAL: ACADEMY FX2 FIRE-RATED EXTINGUISHER CABINETS - PLEASE NOTE CHANGES IN WALL OPENING PG 2 OF 2**

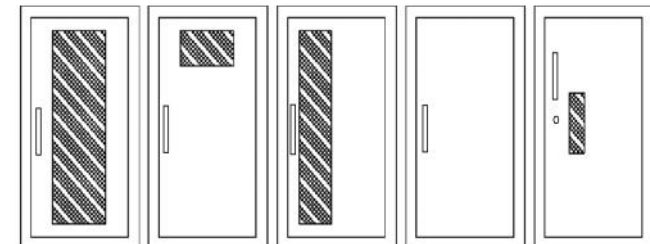
TRIM & DOOR SERIES #			Tub I.D.			Frame O.D.		FX Wall Opening New Dimensions 1/23/15 - Please Note!			Fits Extinguishers <a href="#">View Submittal</a>
QTY	Model	Trim Style	A	B	C	E	F	W	H	D	
	<b>8125</b>	Flat 3/8" Trim ●	9	18	5 1/2	12 3/8	21 3/8	11 5/16	20 5/16	6 7/16	Cosmic & Galaxy
	<b>8126</b>	1 1/2" Square ●	9	18	5 1/2	12 3/8	21 3/8	11 5/16	20 5/16	5 3/16	2 1/2-6 (6 lb must be mounted to tub wall),
	<b>8127</b>	2 1/2" Rolled ●	9	18	5 1/2	12 3/8	21 3/8	11 5/16	20 5/16	4 5/8	Mercury 2 1/2- 5
	<b>1720</b>	2-1/4" Square ●	10 1/2	24	5	13 7/8	27 3/8	12 13/16	26 5/16	4	Cosmic/Gal/Merc 2-5
	<b>1825</b>	Flat 3/8" Trim ●	10 1/2	24	5 1/2	13 7/8	27 3/8	12 13/16	26 5/16	6 7/16	Cosmic & Galaxy 2 1/2-6 (6 lb must be mounted to tub wall), Mercury 2 1/2-5
	<b>1826</b>	1 1/2" Square ●	10 1/2	24	5 1/2	13 7/8	27 3/8	12 13/16	26 5/16	5 3/16	
	<b>1827</b>	3" Formed Rolled ●	10 1/2	24	5 1/2	13 7/8	27 3/8	12 13/16	26 5/16	3 5/8	
	<b>1822</b>	4" Rolled/Flush Pull ●	10 1/2	24	5 1/2	13 7/8	27 3/8	12 13/16	26 5/16	3 1/2	
	<b>1828</b>	4 1/2" Rolled	10 1/2	24	5 1/2	13 7/8	27 3/8	12 13/16	26 5/16	2 13/16	
	<b>1025</b>	Flat 3/8" Trim ●	10 1/2	24	6	13 7/8	27 3/8	12 13/16	26 5/16	6 15/16	Cosmic & Galaxy 2 1/2-10 Mercury 2 1/2-5, Sentinel 5
	<b>1026</b>	1 1/2" Square ●	10 1/2	24	6	13 7/8	27 3/8	12 13/16	26 5/16	5 11/16	
	<b>1027</b>	3" Formed Rolled ●	10 1/2	24	6	13 7/8	27 3/8	12 13/16	26 5/16	4	
	<b>1022</b>	4" Rolled/Flush Pull ●	10 1/2	24	6	13 7/8	27 3/8	12 13/16	26 5/16	4	
	<b>1028</b>	4 1/2" Rolled	10 1/2	24	6	13 7/8	27 3/8	12 13/16	26 5/16	3 5/16	
	<b>2025</b>	Flat 3/8" Trim ●	12	27	7 3/4	15 3/8	30 3/8	14 5/16	29 5/16	8 9/16	Any **Cosmic, Galaxy, Mercury, Saturn or Grenadier P (20 lb must be mounted on back of tub), Sentinel 5 & 10
	<b>2026</b>	1 1/4" Square ●	12	27	7 3/4	15 3/8	30 3/8	14 5/16	29 5/16	7 9/16	
	<b>2027</b>	2 1/2" Rolled ●	12	27	7 3/4	15 3/8	30 3/8	14 5/16	29 5/16	7 1/16	
	<b>2022</b>	4" Rolled/Flush Pull ●	12	27	7 3/4	15 3/8	30 3/8	14 5/16	29 5/16	5 3/4	
	<b>2028</b>	4 1/2" Rolled	12	27	7 3/4	15 3/8	30 3/8	14 5/16	29 5/16	5 1/16	
	<b>3025</b>	Flat 3/8" Trim ●	16	32	7 3/4	19 3/8	35 3/8	18 5/16	34 5/16	8 9/16	Any **Cosmic, Galaxy, Mercury, Saturn or Grenadier P (20 lb must be mounted on back of tub), Sentinel 5-15, 272
	<b>3026</b>	1 1/4" Square ●	16	32	7 3/4	19 3/8	35 3/8	18 5/16	34 5/16	7 9/16	
	<b>3027</b>	2 1/2" Rolled ●	16	34	7 3/4	20 3/8	38 3/8	18 5/16	34 5/16	7 1/16	
	<b>3022</b>	4" Rolled/Flush Pull ●	16	32	7 3/4	19 3/8	35 3/8	18 5/16	34 5/16	5 3/4	
	<b>3028</b>	4 1/2" Rolled	16	32	7 3/4	19 3/8	35 3/8	18 5/16	34 5/16	5 1/16	
	<b>4025</b>	Flat 3/8" Trim ●	20	27	7 3/4	23 3/8	30 3/8	22 5/16	29 5/16	8 9/16	Two each of: any **Cosmic, Galaxy, Mercury, Saturn or Grenadier P (20 lb must be mounted on back of tub), Sentinel 5
	<b>4026</b>	1 1/4" Square ●	20	27	7 3/4	23 3/8	30 3/8	22 5/16	29 5/16	7 9/16	
	<b>4027</b>	2 1/2" Rolled ●	20	27	7 3/4	23 3/8	30 3/8	22 5/16	29 5/16	7 1/16	
	<b>4022</b>	4" Rolled/Flush Pull ●	20	27	7 3/4	23 3/8	30 3/8	22 5/16	29 5/16	5 3/4	
	<b>4028</b>	4 1/2" Rolled	20	27	7 3/4	23 3/8	30 3/8	22 5/16	29 5/16	5 1/16	



New Lighter, FX2  
Insulation



3/8" Flat Trim    1-1/2" Square Trim    2-1/2", 3" Rolled Edge    4" Rolled Edge with Recessed Pull Standard



F - Full glass with pull handle  
G - Full glass with pull handle above Saf-T-Lok (not shown)  
D - Horizontal duo panel with pull handle  
E - Horizontal duo panel with pull handle above Saf-T-Lok (not shown)  
V - Vertical duo panel with pull handle  
W - Vertical duo panel with pull handle above Saf-T-Lok (not shown)  
S21 - Solid with pull handle  
L22 - Solid with pull handle above Saf-T-Lok  
L24 - Solid with cylinder key lock and no handle  
B - Small view window with pull handle, and Saf-T-Lok

[VIEW ALL DOOR STYLES ONLINE](#)

[ADA Information](#)

Model Numbers shown in **Large Bold** above are available in several door styles for Quick Shipment. [See current Stock List.](#)

- Cabinets that Meet 4" Maximum ADA Projection Requirement

**Cabinet Mounting Height:** Standard Pull on G, E, W, L22 and B Door Styles with Saf-T-Lok are 3 5/8" Higher than Door Center, so Allow for that When Mounting Cabinet. Standard Pull with No Lock or FLUSH Recessed Pull are Centered on Door.