

DURA-HATCH VIEW EQUIPMENT SERIES™ ROOF HATCH - REHV

Double leaf domed equipment hatches add more daylight into your building with domed equipment hatches.

Material: Steel - 14 gauge galvanized with 22 gauge liner. Aluminum - 11 gauge with 22 gauge liner.

Finish: Gray prime coat on steel, silver prime coat on aluminum.

Domes: Clear over white acrylic domes.

Gasketing: Continuous bulb neoprene door seal.

Insulation: 1" fiberglass insulation in cover, 1/2" rigid fiber insulation on curb.

Hinges: Heavy-duty hinges.

Hold-Open Arm: Galvanized steel automatic hold-open arms with red vinyl handles.

Latches: Two point universal spring latches on each cover with exterior and interior handles.

Spring: Pressure intensifiers with compression springs provide lift assistance.

Sizes: Minimum: 72" x 72" Maximum: 72" x 96".

Clear Opening: Minus 8" on width and minus 8" on length.




Options:

- Curb-mount
- Double-wall curb
- Curb heights
- Stainless steel hardware
- Polyisocyanurate insulation 1" 2"

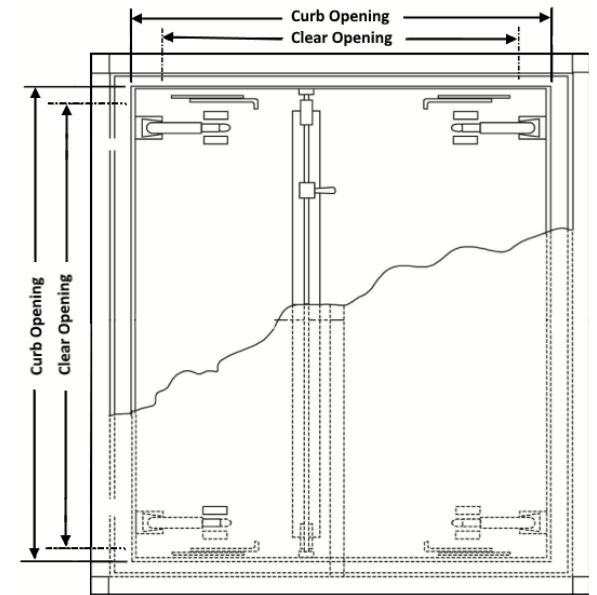
Dome Options:

- Polycarbonate:
 - Double Dome: White over clear
 - Single Dome: White Clear
- Acrylic:
 - Double Dome: White over clear
 - Single Dome: White Clear

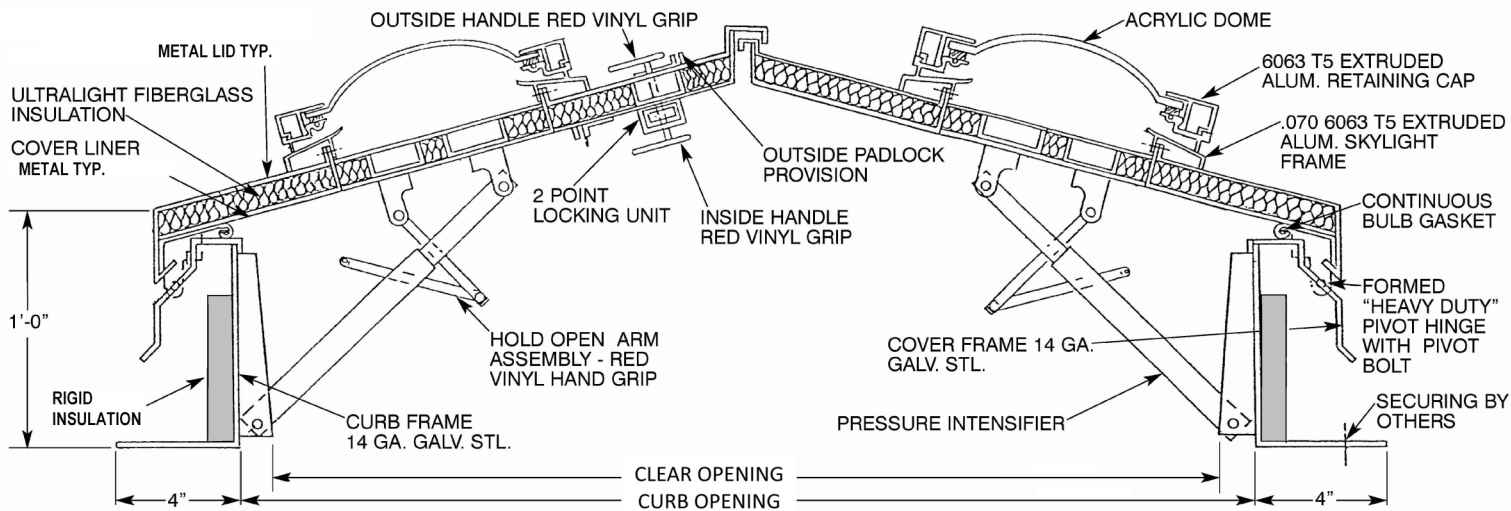
QTY	MODEL	PRIOR MODEL	MATERIAL	CURB OPENING	CLEAR OPENING
	REHVA-7272PSI	DEHA-7272	Aluminum	72" X 72"	64" x 64"
	REHVA-7296PSI	DEHA-7296 (DEHA-1)	Aluminum	72" X 96"	64" x 88"
	REHVG-7272PG	DEHG-7272	Steel	72" X 72"	64" x 64"
	REHVGGA-7272PSI	DEHGA-7272	Steel Curb & Aluminum Lids	72" X 72"	64" x 64"
	REHVGGA-7296PSI	DEHGA-7296 (DEHGA-1)	Steel Curb & Aluminum Lids	72" X 96"	64" x 88"
	Custom Size:	--			

 DUR-RED PRODUCTS 9702 Newton Av S, Bloomington, MN 55431	800-554-6077 sales@activarcp.com www.activarcp.com	Distributor: Contractor: Date: Scale: N/A Pages: 1 of 2	Project: Approved By: Architect: Item #
	MANY LOCATIONS NATIONWIDE		

DURA-HATCH VIEW EQUIPMENT SERIES™ ROOF HATCH - REHV



MODEL REHVG SHOWN BELOW



DUR-RED PRODUCTS

9702 Newton Av S, Bloomington, MN 55431

800-554-6077

sales@activarcpg.com

www.activarcpg.com

MANY LOCATIONS NATIONWIDE

Distributor:

Contractor:

Date:

Scale: N/A

| Pages: 2 of 2

Project:

Approved By:

Architect:

Item #