

SUBMITTAL: DOUBLE LEAF SMOKE VENT - UFV™

Certifications: UL Listed # ZBDZ.R16688. Tested to meet ANSI/UL793 standard for "automatically-operated roof vents". The smoke vents are equipped with a UL-listed 165° F fusible link for automatic operation. The fusible link can be quickly and easily replaced.

Sizes: Models 48" x 48" up to 48" x 96" are UL listed. **Roof Opening size is order size.**

Insulation: 1" rigid fiber insulation strapped to the curb, lid has fiberglass insulation.

Construction: Covers are 11 gauge aluminum, curb and curb frame are 14 gauge galvanized steel, fully welded and ground smooth, gasketed with a continuous bulb gasket for weather tightness.

Operation: Torsion spring drives open the covers automatically. Shock absorbers control the speed of the leaves as they open.

Hardware: Heavy gauge aluminum 3/16" pivot hinges. Pull handles are provided for exterior or interior manual operation.

Finish: 2 coats prime coat.

Wind/Live Load & Uplift: Covers shall open against 10 psf (49 kg/m²) snow/wind load. Vent assembly rated for 40 psf (195 kg/m²) live load. Covers will remain closed under 90 psf (438 kg/m²) wind uplift force.

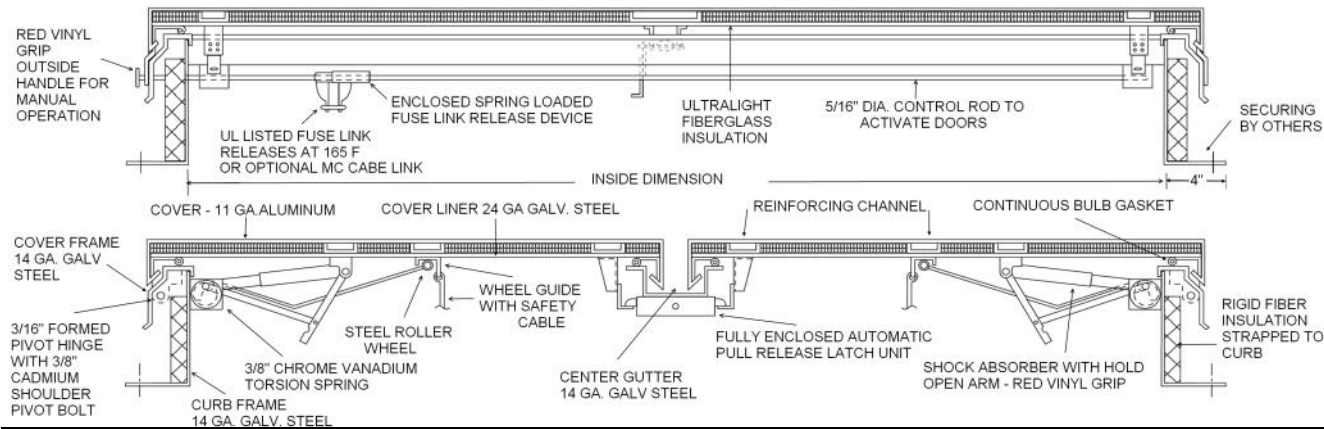
Options at Additional Cost:

- McCabe Link 24 ga galvanized outer curb liner Security Grille to Fit Opening
- 370° UL Listed Fuse Link (replaces 165° fuse link) Optional color Gray Bronze White
- Aluminum Curb and Curb Frame Mill Finish for Covers and Curb When Aluminum Curb Option is Selected




Domed Lid: See separate submittal

Custom Sizes & Finishes Available - Contact Customer Service



QTY	MODEL	ROOF OPENING Width x Length (hinge side)
	UFV-1	48" x 48"
	UFV-2	48" x 72"
	UFV-3	48" x 90"
	UFV-4	48" x 96"
	UFV-5	60" x 60" (not UL listed)
	UFV-6	60" x 96" (not UL listed)
Other Sizes Available Upon Request		

 <p style="text-align: center;">UFV IS A TRADEMARK OF ACPG ALWAYS DOWNLOAD THE MOST CURRENT SUBMITTAL BEFORE ORDERING</p>	Distributor:	Quantity:
	Contractor:	Approved By:
	Model #:	Architect:
	Project:	Date:
HEADQUARTERS: 9702 NEWTON AV SOUTH, BLOOMINGTON, MN 55431 PH: 800-554-6077 EMAIL: SALES@ACTIVARCPG.COM WWW.ACTIVARCPG.COM MANUFACTURING: BLOOMINGTON MN AND COMMERCE, CA WAREHOUSES: MANY WAREHOUSES NATIONWIDE 6/25/2020		