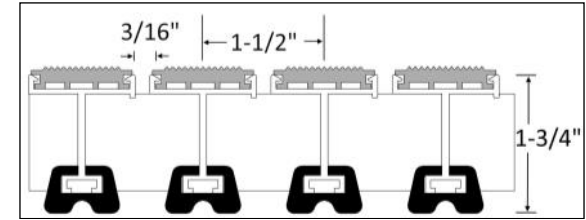


The Newly-Redesigned Line of Rigid Aluminum Grating for High Traffic Areas is Now Rated for 1000 lb per Wheel Load when Installed in Level Bed Frames. Large Debris and Moisture Collection Capacity of the Recessed 900 Series Helps to Keep Entryways Cleaner and Drier.

CONSTRUCTION

Tread rails and frames are mill finish, 6063-T5 aluminum alloy designed for permanent recessed installation. Rails are mechanically joined every 10" (254 mm) by keylock bars. The 3/16" (4.76 mm) space between rails allows debris and moisture to fall to the recess, while continuous length bottom cushions of high-performance Santoprene® TPV reduce noise by eliminating metal to concrete contact. Treads are spaced 1.5" (38mm) on center 8 treads per foot in the direction of travel - providing tread over 89% of the grating area. Rated for 1000 lb per wheel rolling load with JL-L and JL-LAF frames.



TREAD SELECTION—All New Line of Heavy-Duty Carpet Now Available—with Added Scraping Fibers

- Premium Carpet** —Super absorbent, stain-resistant 33 oz. nylon carpet now with 10 mil scraping fibers added (JL-900)
- Tuff Tread™** - Non-absorbent polypropylene carpet with 20 mil fibers to remove more dirt— interior/exterior use (JL-905)
- Vinyl Tread**— Full length serrations for wet exterior or interior entryways (JL-901)
- Vinyl Abrasive Tread**—Abrasive grit provides our highest coefficient of friction for interior use (JL-904)
- Serrated Aluminum**—Single piece tread rail with full-length serrations (JL-902)

[VIEW TREAD
OPTIONS
ONLINE](#)

RECESSED ALUMINUM FRAME OPTIONS—SEE PAGE 2:

- JL-L:** Recessed level-bed frame 1-15/16" x 1/2"
- JL-LAF:** Recessed angle frame 1-3/4" x 1/8"

FRAME FINISH OPTIONS:

- Mill
- Clear Anodized
- Color Anodized—Dark Bronze, Black

RECESSED ALUMINUM FRAME WITH PIT OR DRAIN PAN OPTIONS:

- JL-CP:** Recessed concrete pit frame with adjustable cross-supports 4-1/4" x 1/2"
- JL-DP:** Recessed concrete pit frame with adjustable cross-supports 4-1/4" x 1/2" & Drain Pan.


LEED™

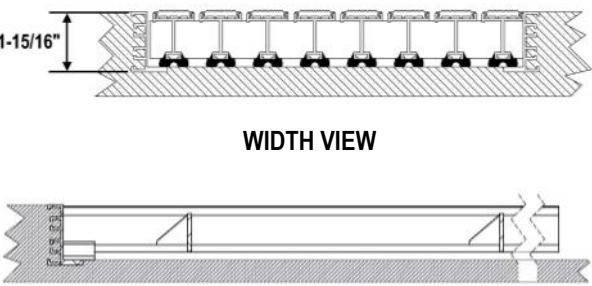
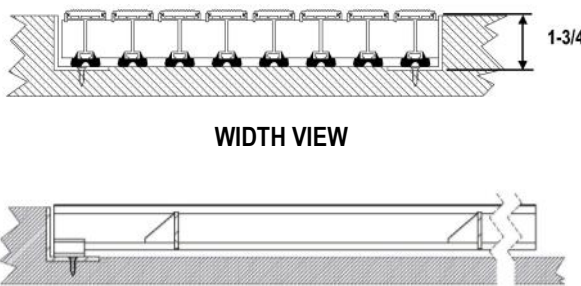
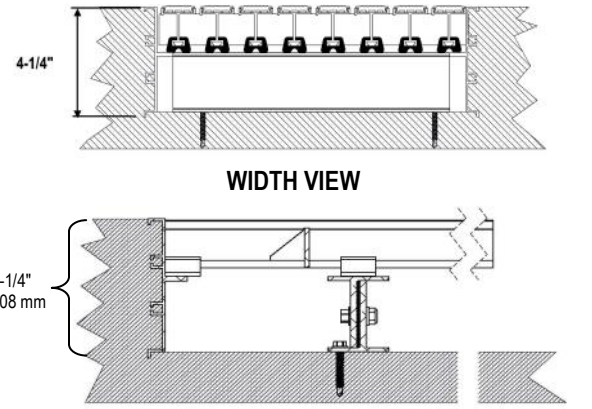
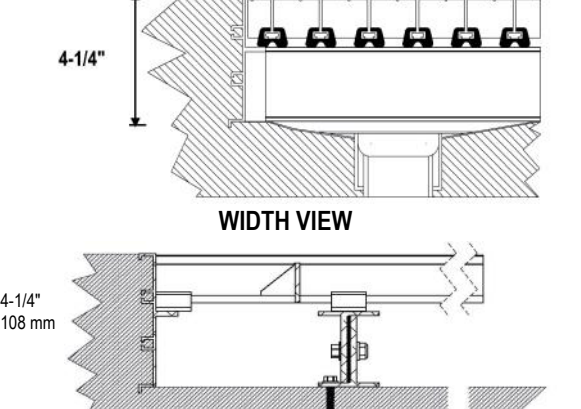
MR Credit 4.1, MR 4.2 Recycled Content Frames & Tread Rail: 74% recycled aluminum. .
EQ5 Indoor Chemical and Pollutant Source Control: Meets the requirement if product is at least ten (10) feet in the traffic direction and the product is properly maintained.



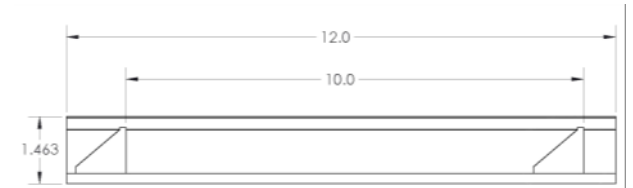
INSTALLATION

Tread rails must run perpendicular to traffic direction. See illustration on page 2. Order size is limited to full tread width increments. Grate dimensions allow for clearance between sections and frames in the width dimension only.

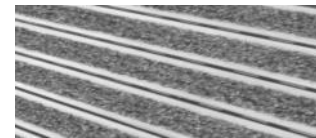
 <p>ACTIVAR INC. <small>www.activarcpg.com</small> Construction Products Group</p> <p>JL INDUSTRIES JL-900, JL-901, JL-902, JL-904, JL-905, JL-L, JL-LAF, JL-CP, JL-DP, TUFF-TREAD™ ARE TRADEMARKS OF ACTIVAR</p>	<p>Introducing A Newly Engineered Line of Entrance Mats & Gratings from ACPG!</p> <p>When Ordering, Provide Width by Length (Traffic Direction) COPYRIGHT 2015 ACTIVAR CONSTRUCTION PRODUCTS GROUP, INC</p>
<p>HEADQUARTERS & JL INDUSTRIES: 4450 WEST 78TH ST CIRCLE, BLOOMINGTON, MN 55435-5416 PH: 800-554-6077 FAX: 952-835-2218 EMAIL: SALES@ACTIVARCPG.COM WWW.ACTIVARCPG.COM ACPG WEST COAST/SAMSON: COMMERCE, CA WAREHOUSES: FT MYERS, FL DALLAS TX, LANCASTER PA, ATLANTA GA, CHICAGO, IL, SEATTLE WA, OMAHA NE, FARGO ND 9/24/2015</p>	

 <p style="text-align: center;">WIDTH VIEW</p> <p style="text-align: center;">LENGTH VIEW</p>	 <p style="text-align: center;">WIDTH VIEW</p> <p style="text-align: center;">LENGTH VIEW</p>
<p>JL -L: Cast-in-place recessed level-bed frame with 1000 lbs/wheel load rating, 1-15/16" (49.2mm) deep by 1/2" (12.7mm) profile aluminum alloy. New mitered corner design connects quickly. A blocked out area at least 2" deep and 2" larger than the frame dimensions must be provided in the floor.</p>	<p>JL -LA F: Recessed angle with 1000 lbs/wheel load rating, 1-3/4" (44.5mm) deep by 1/8" (3.2mm) profile aluminum extrusion. Requires an opening of at least 1-3/4" (44.5 mm) deep in the floor.</p>
 <p style="text-align: center;">WIDTH VIEW</p> <p style="text-align: center;">LENGTH VIEW</p>	 <p style="text-align: center;">WIDTH VIEW</p> <p style="text-align: center;">LENGTH VIEW</p>
<p>JL -CP: Cast-in-place concrete Pit—recessed pit with adjustable cross-supports. 4-1/4" (108mm) by 1/2" (12.7mm) profile aluminum alloy with adjustable cross-supports 4" O.C. A blocked out area at least 4 1/2" deep and 3" larger than the frame dimensions must be provided in the floor.</p>	<p>JL -DP: Recessed concrete pit frame with aluminum drain pan. 4-1/4" (108mm) by 1/2" (12.7mm) profile aluminum alloy with adjustable cross-supports 4" O.C. Drain pan is mill aluminum. Drain port and plumbing by others. A blocked out area at least 4 1/2" deep and 3" larger than the frame dimensions must be provided in the floor.</p>

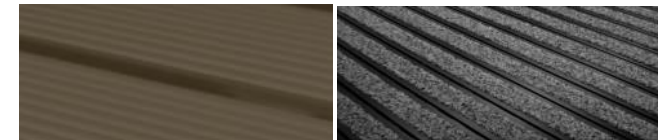
DETAIL OF CONSTRUCTION



Treads are 1.5" O.C. Approximately 8 Treads Per Foot
Depth of Frame is 1.463" Keylocks Located Every 10"



Mill or Clear Anodized



Dark Bronze Anodized

Black Anodized

