

# SUBMITTAL: PANORAMA FIRE-FX2 FIRE-RATED STEEL TRIMLESS FIRE EXTINGUISHER CABINETS

The Panorama Cabinet Features a Frameless Acrylic Door of Clear or Opaque Textured Acrylic with Many Lettering Options. The FX2 Fire-Rated Trimless Series is Designed to be Installed Between the layers of Drywall or Under Plaster for a Flush, Finished Surface.

**Door Construction:** Flush acrylic cabinet doors are attached by a continuous hinge and equipped with zinc-plated handle and roller catch.

**Flange for Drywall, Stucco or Plaster:** 1-1/2" wide recessed flange is to be concealed by drywall, stucco or plaster. 5/8" Drywall - first layer of drywall is to be installed before cabinet, second layer over flange after cabinet is installed. 3/4" depth Plaster or Stucco - fire-rated substrate is to be installed before cabinet, and plaster applied after cabinet is installed.

**Tub:** The tub is constructed of cold rolled steel with white powder-coat finish standard. Tub forms a flange to cover cut edges of wallboard material. Fire-resistant material is attached to the exterior of the tub.

**Fire-Rating:** Fire-FX2™ cabinets are fabricated in accordance with the UL label for one and two hour combustibile and non-combustibile wall system building codes. The fire testing has met the requirement of ANSI/UL 1479 (ASTM –E814) and ULC/CAN S115-for membrane and penetration firestops. Installation instructions must be strictly adhered to in order to obtain the fire rating.

**STEP 1: SELECT MODEL NUMBER ,AND QUANTITY ON CHART** (refer to chart on pg 2)

**STEP 2: SELECT DOOR ACRYLIC WITH HANDLE**

(Check one box below)

- C70 Clear 3/16" Unlettered Smooth Acrylic
- C71 Clear 3/16" Unlettered Smooth Acrylic & Saf-T-Lok™
- P Identity: 3/16" Textured Obscure Acrylic with Lettering

**STEP 3 - SELECT LETTERING STYLE FOR P DOORS** View lettering styles on page 2 or:

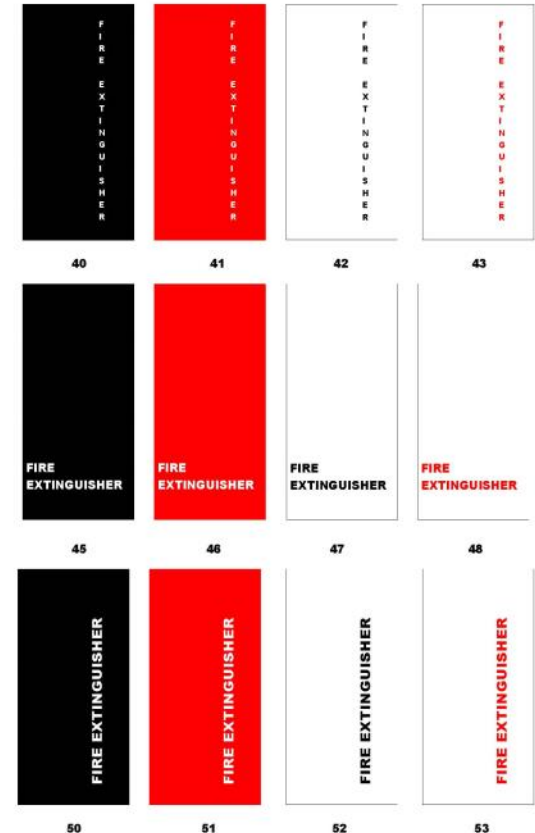
40 Vert, Black Bkgd, White Lettering	45 Horiz, Black Bkgd, White Lettering	50 Ascend, Black Bkgd, White Lettering
41 Vert, Red Bkgd, White Lettering	46 Horiz, Red Bkgd, White Lettering	51 Ascend, Red Bkgd, White Lettering
42 Vert, White Bkgd, Black Lettering	47 Horiz, White Bkgd, Black Lettering	52 Ascend, White Bkgd, Black Lettering
43 Vert, White Bkgd, Red Lettering	48 Horiz, White Bkgd, Red Lettering	53 Ascend, White Bkgd, Red Lettering


**STEP 4: OPTIONAL FEATURES AT ADDED COST (SELECT ANY)**

- Futura "Fire" Pull \_\_\_ Mill Alum \_\_\_ Red \_\_\_ White
- Flush Pull Handle for "P" Style Doors Only (PRH)
- Polished Chrome Handle (PUCH)
- Optional Colors: Tub and hinge will be painted In a single color  
 - select from these: \_\_\_ Red \_\_\_ Black \_\_\_ Flat Black  
 \_\_\_ Sand \_\_\_ AMS Beige \_\_\_ SC Flat Beige \_\_\_ Gray \_\_\_ Bronze \_\_\_ Silver
- (CA) Commander Alarm
- (BA) Brigadier Alarm

See Website for More Information on Options

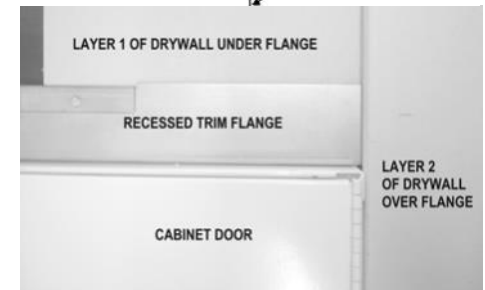
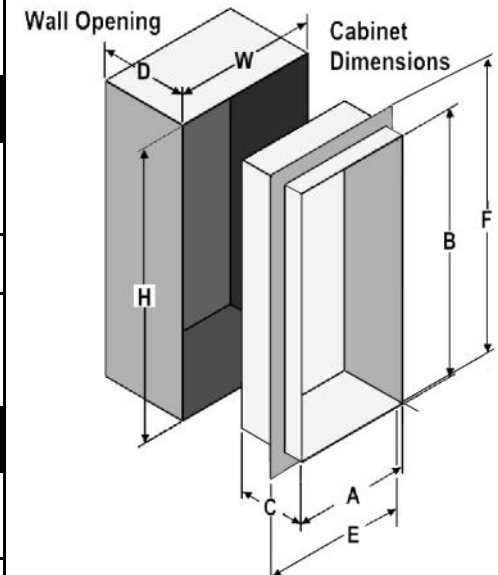
**Panorama "P" Style Door Selections**



 <p>PANORAMA™ IS A TRADEMARK OF ACPG                  DOWNLOAD CURRENT SUBMITTAL BEFORE ORDERING</p>	Distributor:	Quantity:
	Contractor:	Approved By:
	Model #:	Architect:
	Project:	Date:
HEADQUARTERS: 9702 NEWTON AV S, BLOOMINGTON, MN 55431 PH: 800-554-6077 EMAIL: SALES@ACTIVARCPG.COM WWW.ACTIVARCPG.COM MANUFACTURING: BLOOMINGTON MN & COMMERCE, CA • WAREHOUSES: MANY LOCATIONS NATIONWIDE 12/15 /2020		

# SUBMITTAL: PANORAMA FX2™ FIRE-RATED STEEL TRIMLESS EXTINGUISHER CABINETS

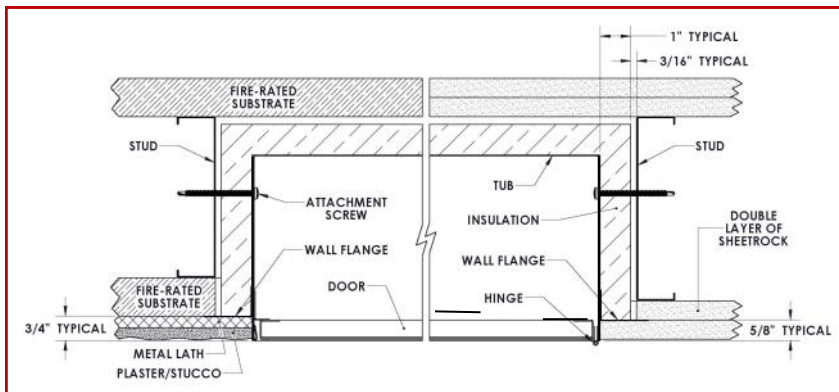
TRIM & DOOR SERIES #			Tub I.D.			Frame O.D.		FX Wall Opening			Fits Fire Extinguishers
QTY	Model	Trim Style	A	B	C	E	F	W	H	D	
<b>TRIMLESS CABINET WITH RECESSED FLANGE FOR INSTALLATION OF 5/8" DRYWALL OVER AND UNDER TRIM</b>											
Example of Part # 8114HC70FX2											
	8114H__FX2	Trimless Drywall	9	18	5 1/2	12 1/8	21 1/8	11 5/16	20 5/16	6 3/16	Cosmic & Galaxy 2 1/2-6 (6 lb must be mounted on tub) Mercury 2 1/2-5
	1014H__FX2	Trimless Drywall	10 1/2	24	6	13 5/8	27 1/8	12 13/16	26 5/16	6 11/16	Cosmic & Galaxy 2 1/2-10 Mercury 2 1/2-5, Sentinel 5
	2014H__FX2	Trimless Drywall	12	27	7 3/4	15 1/8	30 1/8	14 5/16	29 5/16	8 7/16	Any Cosmic, Galaxy, Mercury, Saturn or Grenadier P (20 lb must be mounted on back of tub), Sentinel 5 & 10, Nebula 270
<b>TRIMLESS CABINET WITH RECESSED FLANGE FOR INSTALLATION OF 3/4" PLASTER OVER TRIM</b>											
Example of Part # 8114DP40FX2											
	8114D__FX2	Trimless Plaster	9	18	5 1/2	12 1/8	21 1/8	11 5/16	20 5/16	6 1/16	Cosmic & Galaxy 2 1/2-6 (6 lb must be mounted on tub) Mercury 2 1/2-5
	1014D__FX2	Trimless Plaster	10 1/2	24	6	13 5/8	27 1/8	12 13/16	26 5/16	6 9/16	Cosmic & Galaxy 2 1/2-10 Mercury 2 1/2-5, Sentinel 5
	2014D__FX2	Trimless Plaster	12	27	7 3/4	15 1/8	30 1/8	14 5/16	29 5/16	8 5/16	Any Cosmic, Galaxy, Mercury, Saturn or Grenadier P (20 lb must be mounted on back of tub), Sentinel 5 & 10, Nebula 270



All Cabinets Meet 4" Maximum ADA Projection Requirement

### 3/4" PLASTER

### 5/8" DRYWALL



### ADA Cabinet Mounting Height:

Standard pull on C71 door style with Saf-T-Lok is 3 5/8" higher than door center, so allow for that when mounting cabinet. C70 and P doors with no lock, or flush pull are centered on door.

TRIMLESS RECESSED FLANGE FOR 5/8" DRYWALL OR 3/4" PLASTER (METAL LATH BY OTHERS)