

SUBMITTAL: FD3 SERIES 3 HR FIRE-RATED ACCESS PANEL FOR WALLS & CEILINGS

The Maxam three hour fire-rated single leaf panel for use in a wall or ceiling application with the largest net sizes available. Offering sizes up to 48" x 60" with an Intertek Warnock Hersey Listing.

Materials: Satin finish galvanized steel or 304 stainless steel.

Frame: 16 ga (1.61 mm) steel up to and including 30" x 48" or 14ga (1.99 mm) steel for larger sizes. Depth "D"= 3-1/4" (83 mm)

Flange: Width - 7/8" (22mm) up to and including 36" x 36". 1-1/4"(29 mm) for larger sizes.

Door Panel: 18 ga (1.31mm) galvanized steel with 22 ga (0.85mm) liner.

Insulation: The door panel contains 2-1/2" (63 mm) of high temperature insulation.

Finishes: Rust inhibitive off-white prime coat or # 4 stainless steel finish on exterior surface.

Hinges: The concealed continuous rod hinge is designed to secure the door panel. The hinge is placed on the long side of the door ("H" dimension) unless otherwise requested. Note: Sizes greater than 48" in a wall position—continuous piano hinge is standard.

Panel Closer: The automatic panel closer will close and latch the door from an open position of approximately 90° as required by NFPA 80.

Latch: The standard factory installed latch is a flush mount 1/4" allen key. All fire-rated locks are self-latching and include an interior latch release mechanism allowing the doors to be opened from the inside.

Sizes: Walls: Minimum 12" x 12", maximum 48" x 60".

Ceilings: Minimum 12" x 12", maximum 36" x 36".



STEP 1: SELECT MODEL NUMBER AND QUANTITY ON CHART—PAGE 2 OR ENTER CUSTOM SIZE BELOW

___ "Width x ___ " Height - **Rough opening is order size.** Frame is 1/4" less than ordering size.

STEP 2: SELECT WALL OR CEILING INSTALLATION

___ Wall (Model FD3W) ___ Ceiling (Model FD3C)

STEP 3: SELECT FINISH:

___ Galvanized steel with off-white primer

___ 304 Stainless steel with #4 finish on exterior

OPTIONAL FEATURES AT ADDITIONAL COST

Single Latch - Select One Option:

___ Raised knurled knob (KK) ___ 1-1/8" mortise prep complete w/mortise cylinder (MPI) ___ 1-1/8" mortise prep only (MP)

Dual Latches - Select One Option:

___ 1-1/8" mortise prep complete with mortise cylinder (MPI) ___ Top or ___ Bottom Second Latch will be Allen Key (A)

___ 1-1/8" mortise prep only (MP) ___ Top or ___ Bottom Second Latch will be Allen Key (A)

___ (2)1-1/8" mortise preps only (MP) top and bottom

___ (2) 1-1/8" mortise preps complete with (2) mortise cylinders (MPI) top and bottom

Other:

___ (PH) Continuous piano Hinge for under 48" panel

___ (A) Masonry Straps

___ (K) Smoke Gasket - listed by Intertek Warnock Hersey. See Testing Standards in red box.



Intertek Warnock Hersey Listed and Labeled
 3 Hour Fire Rating for vertical and horizontal installation
 Temp Rise Max: 43° C / 77° F at 30 Min 149° C / 268° F at 60 Min

Testing Standards:
Vertical: NFPA 252, UL 10B, CAN/ULC S10 4
Horizontal: UBC 43-7

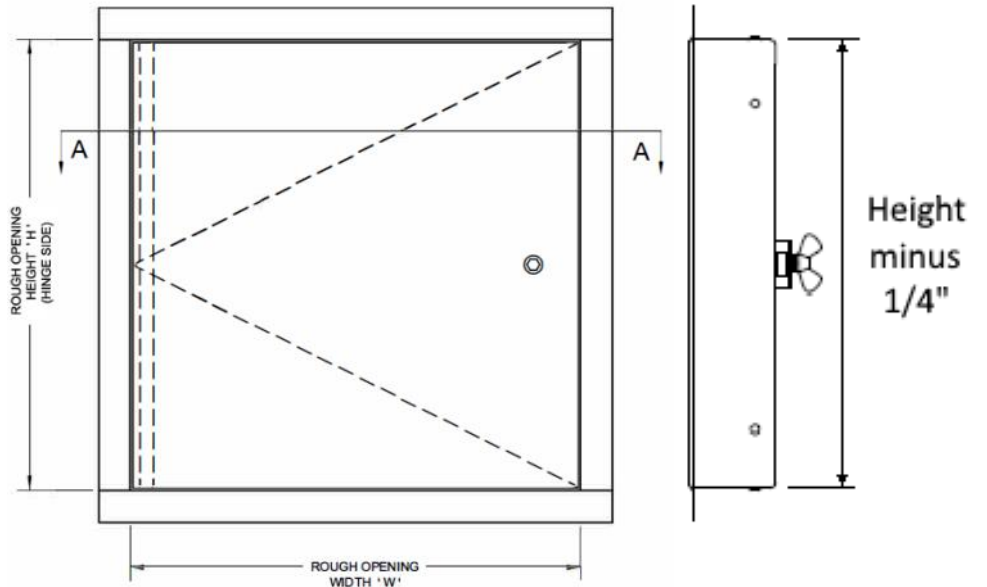
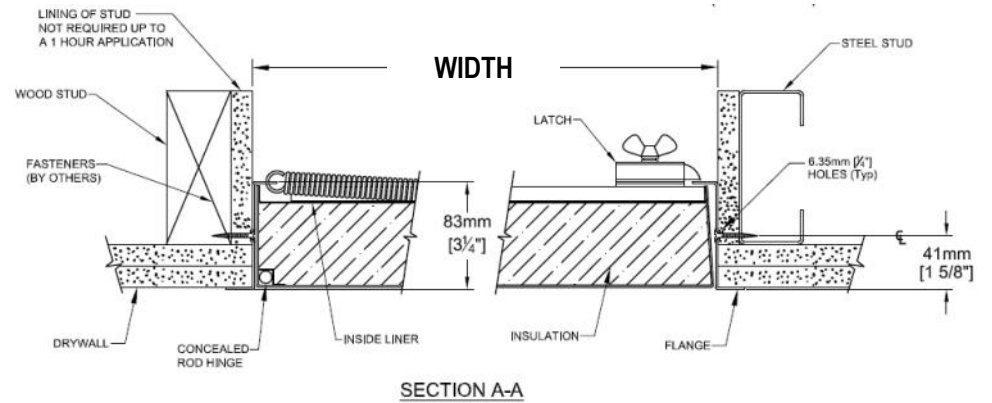
Optional Smoke Gasket Testing Standards:
 UL 1784 per NFPA 105, ASTM E152, CAN4 S106, UBC 7-2, UL 10 (b) NFPA 252 (90- minute)

LATCH AND LOCK OPTIONS		
Standard 1/4" Allen Key (A)	Optional Knurled Knob (KK)	Optional Mortise Lock (MPI)

<p>JL INDUSTRIES</p>	Distributor:	Quantity:
	Contractor:	Approved By:
	Model #:	Architect:
	Project:	Date: © 2023 Activar Construction Products Group, Inc.
<p>HEADQUARTERS: 9702 NEWTON AVE S, BLOOMINGTON, MN 55431 PH: 800-554-6077 EMAIL: SALES@ACTIVARCPG.COM WWW.ACTIVARCPG.COM</p> <p>MANUFACTURING: BLOOMINGTON, MN & COMMERCE, CA WAREHOUSES: SEE WEBSITE FOR LOCATIONS 1/23/2023</p>		

SUBMITTAL: FD3 SERIES 3 HR FIRE-RATED ACCESS PANEL FOR WALLS & CEILINGS

Rough Opening is Order Size Width x Height - Hinge Side is "H"						Door Size Inches	No. of Latches/ Locks	Wt. in Kgs	Wt. in lbs.
Qty	Wall Model	Qty	Ceiling Model	Inches W x H	Metric (mm) W x H				
	FD3W-1212		FD3C-1212	12 x 12	305 x 305	11-5/8 x 11-5/8	1	6	14
	FD3W-1216		FD3C-1216	12 x 16	305 x 406	11-5/8 x 15-5/8	1	8	17
	FD3W-1218		FD3C-1218	12 x 18	305 x 457	11-5/8 x 17-5/8	1	8	18
	FD3W-1224		FD3C-1224	12 x 24	305 x 610	11-5/8 x 23-5/8	1	10	23
	FD3W-1414		FD3C-1414	14 x 14	356 x 356	13-5/8 x 13-5/8	1	8	17
	FD3W-1616		FD3C-1616	16 x 16	406 x 406	15-5/8 x 15-5/8	1	9	20
	FD3W-1624		FD3C-1624	16 x 24	406 x 610	15-5/8 x 23-5/8	1	12	27
	FD3W-1818		FD3C-1818	18 x 18	457 x 457	17-5/8 x 17-5/8	1	11	24
	FD3W-1824		FD3C-1824	18 x 24	457 x 610	17-5/8 x 23-5/8	1	13	29
	FD3W-1830		FD3C-1830	18 x 30	457 x 762	17-5/8 x 29-5/8	1	16	35
	FD3W-1836		FD3C-1836	18 x 36	457 x 914	17-5/8 x 35-5/8	1	19	42
	FD3W-1848		FD3C-1848	18 x 48	457 x 1219	17-5/8 x 47-5/8	1	24	53
	FD3W-2020		FD3C-2020	20 x 20	508 x 508	19-5/8 x 19-5/8	1	13	28
	FD3W-2024		FD3C-2024	20 x 24	508 x 610	19-5/8 x 23-5/8	1	15	32
	FD3W-2030		FD3C-2030	20 x 30	508 x 762	19-5/8 x 29-5/8	1	17	38
	FD3W-2036		FD3C-2036	20 x 36	508 x 914	19-5/8 x 35-5/8	1	20	45
	FD3W-2222		FD3C-2222	22 x 22	559 x 559	21-5/8 x 21-5/8	1	15	32
	FD3W-2230		FD3C-2230	22 x 30	559 x 762	21-5/8 x 29-5/8	1	19	41
	FD3W-2236		FD3C-2236	22 x 36	559 x 914	21-5/8 x 35-5/8	1	22	48
	FD3W-2424		FD3C-2424	24 x 24	610 x 610	23-5/8 x 23-5/8	1	16	36
	FD3W-2430		FD3C-2430	24 x 30	610 x 762	23-5/8 x 29-5/8	1	20	43
	FD3W-2436		FD3C-2436	24 x 36	610 x 914	23-5/8 x 35-5/8	1	23	51
	FD3W-2448		FD3C-2448	24 x 48	610 x 1219	23-5/8 x 47-5/8	2	30	66
	FD3W-3030		FD3C-3030	30 x 30	762 x 762	29-5/8 x 29-5/8	1	23	51
	FD3W-3036		FD3C-3036	30 x 36	762 x 914	29-5/8 x 35-5/8	2	28	61
	FD3W-3048		FD3C-3048	30 x 48	762 x 1219	29-5/8 x 47-5/8	2	35	78
	FD3W-3232		FD3C-3232	32 x 32	813 x 813	31-5/8 x 31-5/8	2	26	58
	FD3W-3636		FD3C-3636	36 x 36	914 x 914	35-5/8 x 35-5/8	2	32	70
WALL SIZES ONLY BELOW*									
	FD3W-3648			36 x 48	914 x 1219	35-5/8 x 47-5/8	2	41	91
	FD3W-3660			36 x 60	914 x 1524	35-5/8 x 59-5/8	2	52	114
	FD3W-4040			40 x 40	1016 x 1016	39-5/8 x 39-5/8	2	39	85
	FD3W-4048			40 x 48	1016 x 1219	39-5/8 x 47-5/8	2	45	99
	FD3W-4060			40 x 60	1016 x 1524	39-5/8 x 59-5/8	2	56	124
	FD3W-4848			48 x 48	1219 x 1219	47-5/8 x 47-5/8	2	52	115
	FD3W-4860			48 x 60	1219 x 1524	47-5/8 x 59-5/8	2	65	144
* These Panels have 1-1/4" Wide Trim									



Clear Opening Size = R.O. Width minus 4-1/4", Height minus 1-1/2"

Other sizes available upon request for all Models.

Second dimension given is the hinge side (shown in red) unless otherwise specified.

ALSO AVAILABLE IN DOUBLE LEAF
MODELS—FD3D - SEE SEPARATE SUBMITTAL