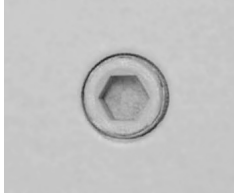


ACCESS PANEL OPTIONS & LOCKS: FD2 AND FD3 SERIES ONLY

GENERAL:

Optional features are not available on all models or sizes, see submittals for most recent information. Color, material and lock and latch options also available, see submittals or separate documentation for more information.



A Standard 1/4" Allen Key Operator

Provided standard on all FD2 and FD3 models at no charge, except FD2L.



KK Optional Knurled Knob Operator

Available at an additional cost. Optional for all models except FD2CI, FD2WI, FD2CT, FD2L, and FD3CI.



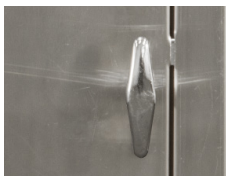
MP Optional 1-1/8" Morise Lock Prep

Available at an additional cost. Optional for all models except FD2RF, FD2CT, FD2L, and FD3RF. Lock by others.



MPI Optional 1-1/8" Morise Prep with Lock Installed

Available at an additional cost or MPI to match standard JL Industries FD models. Optional for all models except FD2RF, FD2WBCT, FD2L, and FD3RF.



Optional Central 2 Point Latch Operator for all Models with 2 Latches

Available at an additional cost. Optional for all models except FD2RF, FD2CT, FD2L, FD3RF, and FD3HT2.



Optional Smoke Gasketing

Available at an additional cost. Intertek Warnock Hersey approved smoke gasketing. Piano hinge required when gasketing is added.



JL INDUSTRIES

9702 Newton Ave S. Bloomington, MN 55431 | Many Locations Nationwide

© 2024 Activar Construction Products Group, Inc.

Access Panel Options and Locks

FD2 and FD3 Series Only

Page 1 of 1

01-22-2024