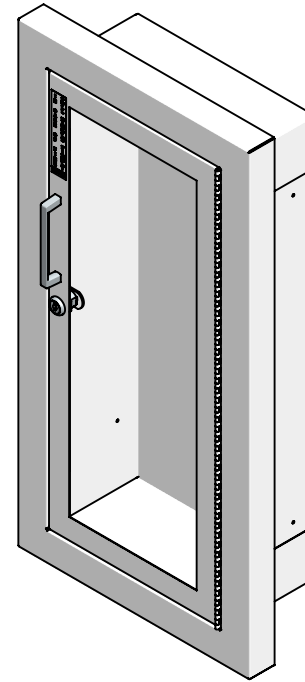
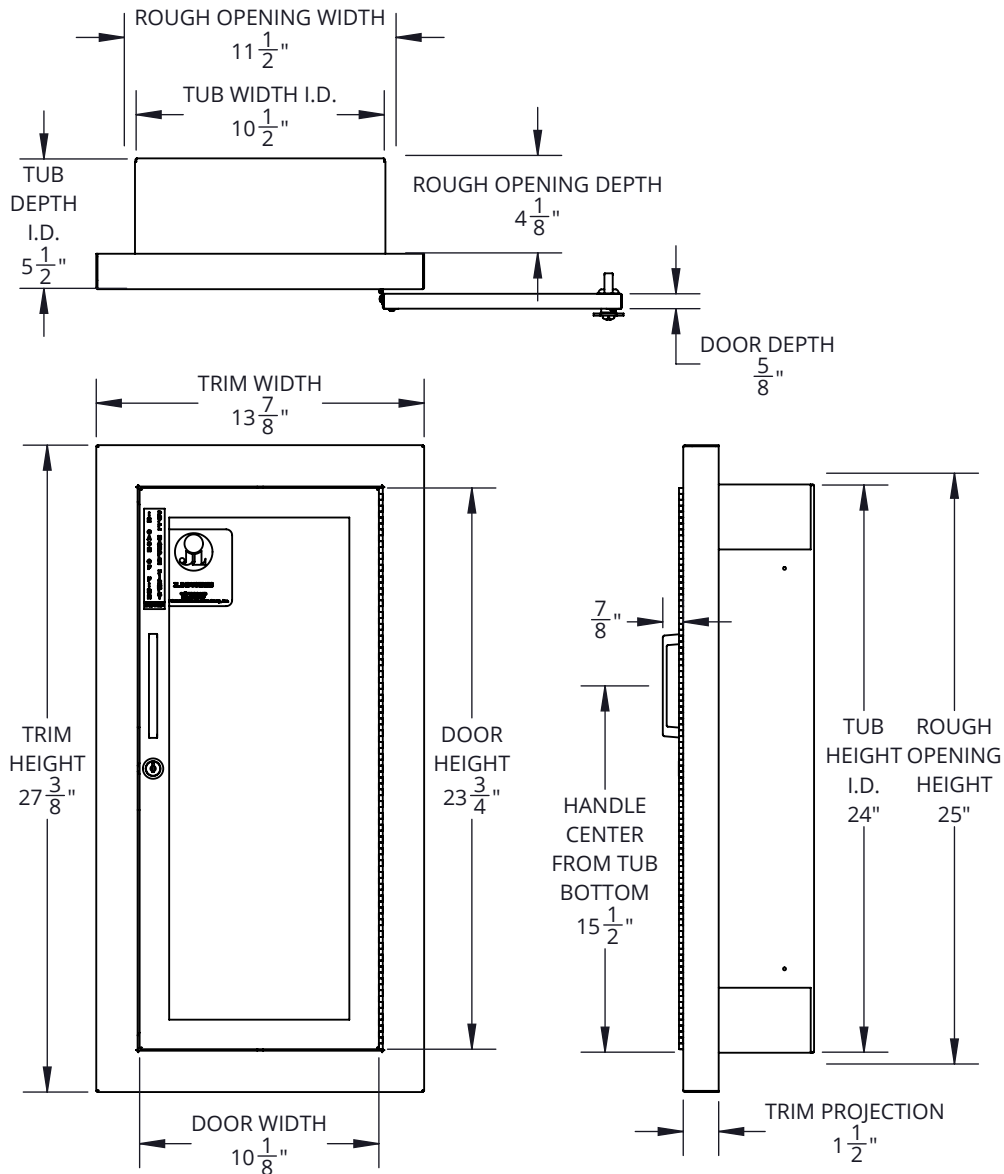


Architectural Series, Fire Protection Cabinet, Ambassador - C1816G10

FE CABINET, AMBASSADOR, 1-1/2" SQ TRIM, FL VIEW SAFTLOK, CLR ACR, CRS TUB, CRS DR/TRM, ALL WHT, 18 TUB



SPECIFICATIONS:

Tub Material: 24 gauge galvanized steel

Trim Material & Style: 20 gauge CRS, semi-recessed 1-1/2" square edge

Door Material & Style: 20 gauge CRS, full view

Glazing: 0.090" clear acrylic (8-1/2" x 22-3/4")

Finish: Powder coat white door and trim, painted white tub

Hinge: Continuous hinge opens door 180 degrees, 20 gauge CRS powder coat white

Hardware: Zinc plated pull handle, Saf-T-Lok™, glass clips & screws

Rough Opening: 11-1/2" x 25" x 4-1/8"

Fire Rating: Not rated

ADA Compliant: Cabinet meets 4" maximum protrusion, locate handle maximum 48" above floor

Compatible Extinguisher: Cosmic 2.5lb. - 6lb., Galaxy 2.5lb - 5.5lb., Mercury 2.5lb. - 5lb.

MODEL # BREAKDOWN:

C — Product Line: Fire protection, cabinet

18 — Tub Size: 10-1/2" x 24" x 5-1/2"

1 — Trim and Door Material: CRS, powder coat finish

6 — Trim Style: Semi-recessed 1-1/2" square edge

G — Door Style: Full view, pull handle, Saf-T-Lok™

10 — Door Glazing: 0.090" clear acrylic

— Color: All white

REPLACEMENT PARTS:

Tub: TUB-18-PP

Trim: T-1016

Door: D-101G

Glazing: G10F10

Hardware Pack: HPFPUS, SL, LC

MODEL #: C1816G10



800-554-6077

sales@activarcpg.com

www.activarcpg.com

9702 Newton Ave S. Bloomington, MN 55431 | Many Locations Nationwide

Distributor:

Project:

Contractor:

Approved By:

Date:

Quantity:

Architect:

Scale: 1:8.125

Pages: 1 OF 1

Drawing #:

C1816G10-SUBMITTAL