

CABINETS — TRIMLESS FX2—FIRE-RATED — 14I-103

INSTALLATION AND MAINTENANCE GUIDE

TOOLS AND HARDWARE NEEDED: (optional)

Screw Gun, Universal # 6 x 2-1/2" (6.4 cm) self-drilling screws

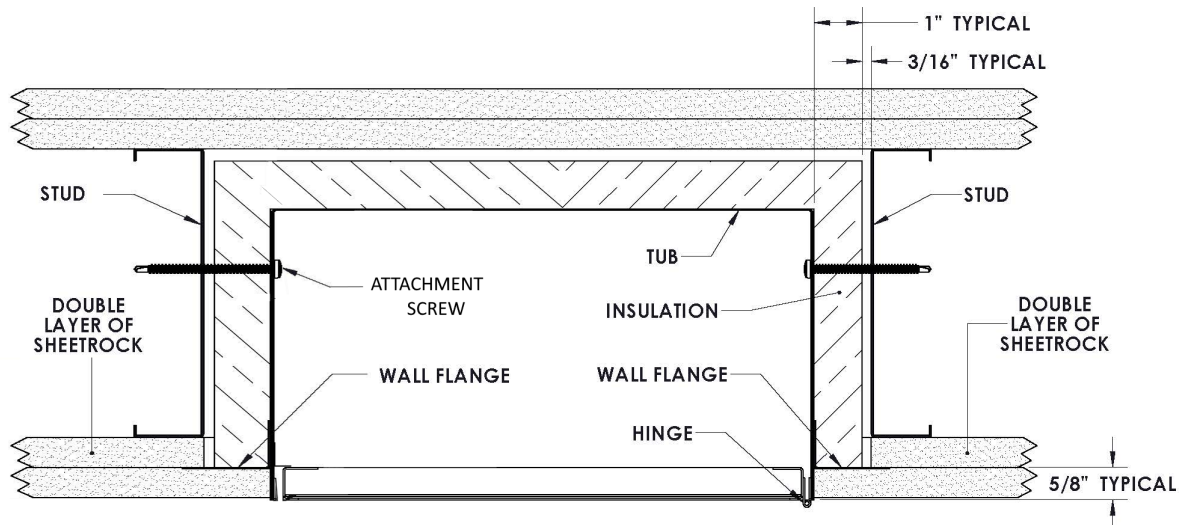
DRYWALL INSTALLATION

NOTE: Trimless cabinets for drywall (except Embassy) are designed to be installed after the first layer of drywall, but prior to the second layer. (FIG. 1)

1. Remove all hardware and glazing, unlock cabinet if lock provided.
2. Install a framed opening above, below and at both sides of cabinet opening at specified location. Wall opening width, height and depth must correspond with dimensions indicated on submittal sheet.
3. Use holes provided in cabinet tub for attaching to stud or substrate material. If wall configuration does not allow for that, then follow step 4 below; otherwise, skip to step 5.
4. *[Drilling Additional Mounting Holes in Tub]:* Drill (2) 1/8" (3.2 mm) holes through tub on each side of cabinet.
5. Place cabinet in position and attach with # 6 x 2-1/2" (6.4 cm) self-drilling screws. Be sure not to over-tighten on either side, which could pull the cabinet out of position in the opening and result in an exposed gap between the cabinet frame and wall opening.
6. Start the screw without completely tightening; then start a screw on the opposite side of the tub. Once all screws are started, tighten each screw in a "criss-cross" pattern. A torque setting of 4-6 is recommended if using a screw gun.
7. Once screws are fully tightened, check cabinet for square and plumb. Adjust if necessary. All interior sides should be straight with no bowing or warping.
8. Check cabinet door assembly for freedom of movement. If it binds, shim as necessary to remove any racking of tub at attachments of stud. Cabinet will need to be removed temporarily in order to add shims.
9. Finish wall construction and install final top layer of drywall. The opening left in this layer of drywall for the FIRE-FX2™ cabinet should be 2" less in width and height than the opening originally made ins in step 3 above; or 1" all around. The top layer of drywall will therefore cover the cabinet wall flange, resulting in a "trimless" appearance.
10. Remove protective plastic from acrylic or glass and install decal if intended for glass. (Panorama Models Glazing is Pre-Installed)
11. Align glazing on inside of door, holding in place while installing glass mounting clips on inside of door. Do not over-tighten.
12. Install handle and roller catch or SAF-T-LOK™ in door. Check alarm if provided.

NOTES: See separate Valve and Hose Cabinet installation instructions if knockouts are needed.

FIG. 1



Note: Drawings shown on this page are examples only of typical installation in a fire-rated wall, and are not to be used as recommendations for wall construction



JL INDUSTRIES



800-554-6077



sales@activarcpg.com



www.activarcpg.com

9702 Newton Av S. Bloomington, MN 55431 | Many Locations Nationwide

**INSTALLATION AND MAINTENANCE
GUIDE 14I-103**

Page 1 of 2

CABINETS — TRIMLESS FX2—FIRE-RATED — 14I-103

INSTALLATION AND MAINTENANCE GUIDE

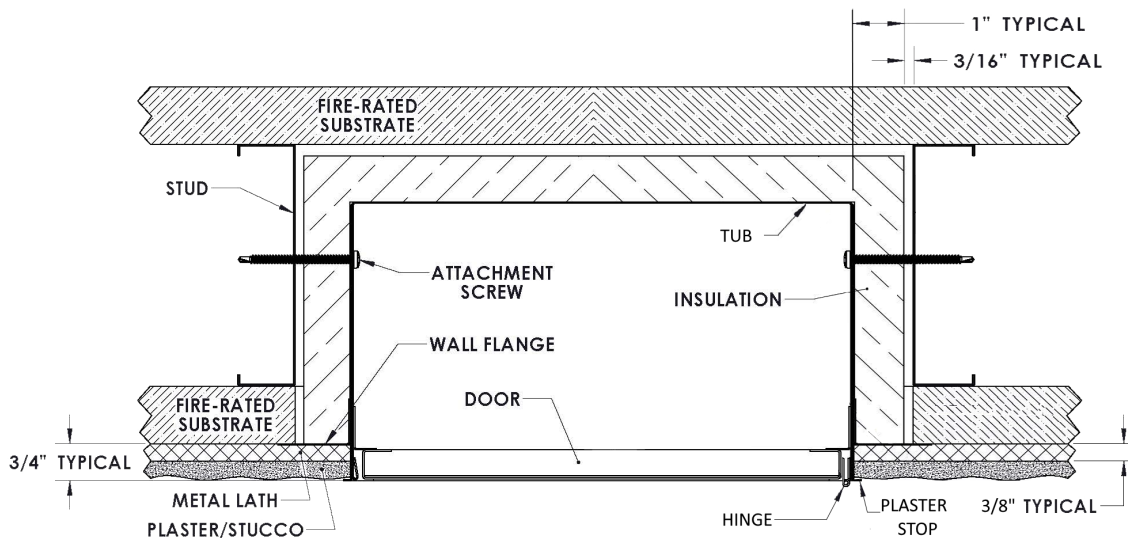
PLASTER OR STUCCO INSTALLATION

NOTE: Trimless cabinets for plaster (except Embassy) are designed to be installed in plaster/stucco wall conditions prior to the application of lath and plaster/stucco. (FIG. 2)

1. Remove all hardware and glazing, unlock cabinet if lock provided.
2. Install a framed opening above, below and at both sides of cabinet opening at specified location. Wall opening width, height and depth must correspond with dimensions indicated on submittal sheet.
3. Use holes provided in cabinet tub for attaching to stud or substrate material. If wall configuration does not allow for that, then follow step 5 below; otherwise, skip to step 5.
4. [Drilling Additional Holes in Tub] Drill (2) 1/8" (3.2 mm) holes through tub on each side of cabinet.
5. Place cabinet in position and attach with # 6 x 2- 1/2" (6.4 cm) self-drilling screws. Be sure not to over-tighten on either side, which could pull the cabinet out of position in the opening and result in an exposed gap between the cabinet frame and wall opening.
6. Start the screw without completely tightening; then start a screw on the opposite side of the tub. Once all screws are started, tighten each screw in a "criss-cross" pattern. A torque setting of 4-6 is recommended if using a screw gun.
7. Once screws are fully tightened, check cabinet for square and plumb. Adjust if necessary. All interior sides should be straight with no bowing or warping.
8. Check cabinet door assembly for freedom of movement. If it binds, shim as necessary to remove any racking of tub at attachments of stud. Cabinet will need to be removed temporarily in order to add shims.
9. Finish wall construction. Lay metal lath material over substrate and fasten securely. Ensure that lath extends over the wall flange at the perimeter of the Fire-FX2™.
10. Apply plaster and/or stucco over metal lath as per manufacturer's instructions and job specifications. Use the forward-projecting edge of the FIRE-FX2™ cabinet as a "plaster stop", for a smooth and flush final installation.
11. Remove protective plastic from acrylic or glass and install decal if intended for glass. (Panorama Models Glazing is Pre-Installed)
12. Align glazing on inside of door, holding in place while installing glass mounting clips on inside of door. Do not over-tighten.
13. Install handle and roller catch or SAF-T-LOK™ in door. Check alarm if provided.

NOTES: See separate Valve and Hose Cabinet installation instructions if knockouts are needed.

FIG. 2



MAINTENANCE: Manually operate once a year to check functionality of moving parts such as latches, hinges and handles. Periodically dust using a clean dry cloth. See separate "Cabinet Maintenance" for more information on cleaning various finishes.

Note: Drawings shown on this page are examples only of typical installation in a fire-rated wall, and are not to be used as recommendations for wall construction



JL INDUSTRIES



800-554-6077



sales@activarcpg.com



www.activarcpg.com

INSTALLATION AND MAINTENANCE GUIDE 14I-103

Page 2 of 2

9702 Newton Av S. Bloomington, MN 55431 | Many Locations Nationwide

© 2023 Activar Construction Products Group, Inc.

The information contained in this document is the sole property of Activar Construction Products Group, Inc. Any reproduction in part or as a whole without the written permission of Activar Construction Products Group, Inc. is prohibited.

REV B – JAN 2023