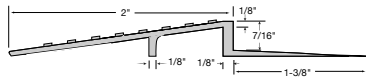


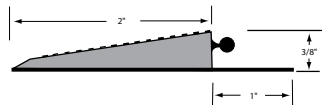
ENTRANCE MAT - Activ-Mat™ EM700 Series - Aluminum Roll-Up Mat

EFSA



EFSA7: Surface-mounted tapered aluminum frame for installation by anchoring to floor. 3/8" (9.5 mm) deep by 1-7/8" (476 mm) gives traction to the full width of the mat. End filler is provided at both ends for a snug fit.

EFSV

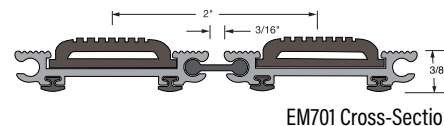
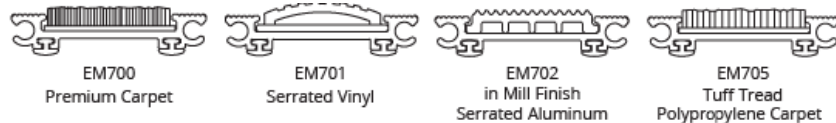


EFSV7: Surface-mounted tapered frame for a moveable installation. 2" (50.8 mm) wide durable black vinyl with serrations to reduce slipping is attached mechanically to tread rails. Order in full tread-width increments.

EFST



EFST7: Surface-mounted tapered vinyl frame with integral rubber tray under entire mat. Clean up of debris that falls under the mat is easy, and protects flooring. Order in full tread-width increments.



ACTIV-MAT™ 700 SERIES:

LDPE HINGES, ECONOMICAL, LOW PROFILE, MEDIUM DUTY

The 700 Series mat combines the benefit of tread with aluminum scraping bars built in to each rail to keep your building cleaner. Available as surface-mounted or recessed.

FEATURES:

- LDPE hinges that cushion each tread rail are quieter than aluminum hinges.
- Mat rolls up compactly for cleaning.
- Drainage holes between tread rails allows moisture and dirt to fall below mat.

PRODUCT DETAILS:

Rail Material: 6063-T6 extruded aluminum alloy

Frame Material:

EFRA & EFRT: 6063-T6 extruded aluminum alloy

EFSA & EFRC: 6063-T5 extruded aluminum alloy

EFSV: Vinyl tapered

EFST: Vinyl tapered frame with integral recycled rubber tray.

Depth: 3/8" (9.5 mm)

Standard Finish: Mill.

Tread Spacing: 2" (50.8 mm) on center with 6 treads per foot in the direction of travel.

Spacing Between Rails: Heel-proof spacing of 3/16".

Rolling Wheel Load Rating: 350 lbs

NOTE:

Verify traffic direction - traffic to run perpendicular to rails.

Maximum single mat size not to exceed 12'-0" (3.66m) in width (dim "x") or 100 sq. ft.

If multiple sections, verify sectioning does not occur in traffic path.

EFRC, EFRA and EFSA: Vinyl filler to be trimmed in field for tight fit.

Mat dimensions allow for clearance between mat section(s) and frame(s) in width (dim "x").

Additional product information including installation instructions may be found at www.activarcp.com/jl-industries

ACTIVAR INC.
CONSTRUCTION PRODUCTS GROUP

9702 Newton Ave S. Bloomington, MN 55431 | Many Locations Nationwide



JL INDUSTRIES

www.activarcp.com

800-554-6077

sales@activarcp.com

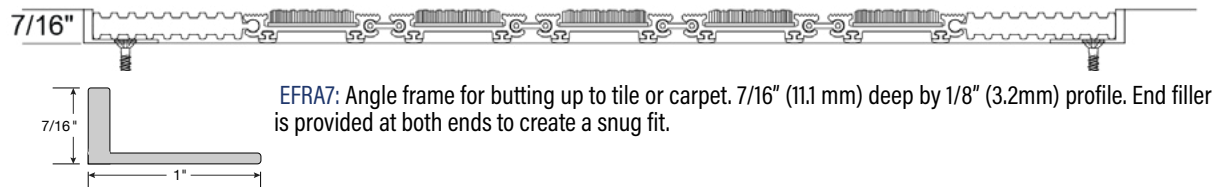
Entrance Mat
Activ-Mat™ EM700 Series
Data Sheet

PAGE 1 OF 2

2/17/2025

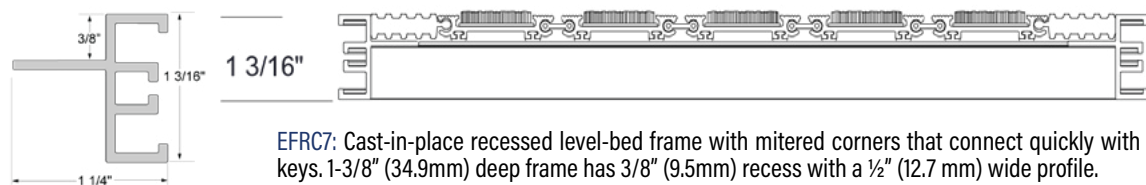
ENTRANCE MAT - Activ-Mat™ EM700 Series - Aluminum Roll-Up Mat

EFRA



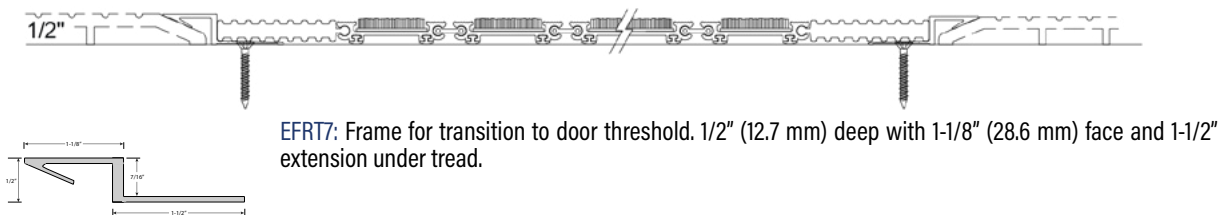
EFRA7: Angle frame for butting up to tile or carpet. 7/16" (11.1 mm) deep by 1/8" (3.2mm) profile. End filler is provided at both ends to create a snug fit.

EFRC



EFRC7: Cast-in-place recessed level-bed frame with mitered corners that connect quickly with corner keys. 1-3/8" (34.9mm) deep frame has 3/8" (9.5mm) recess with a 1/2" (12.7 mm) wide profile.

EFRT



EFRT7: Frame for transition to door threshold. 1/2" (12.7 mm) deep with 1-1/8" (28.6 mm) face and 1-1/2" extension under tread.

ACTIV-MAT 700 SERIES INSERTS



Premium Carpet
EM700



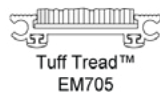
Vinyl
EM701



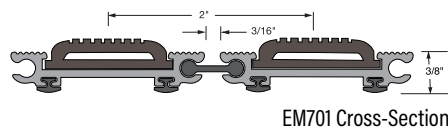
Serrated Aluminum
EM702



Vinyl Abrasive
EM704



Tuff Tread™
EM705



EM701 Cross-Section

ACTIV-MAT™ 700 SERIES:

LDPE HINGES, ECONOMICAL, LOW PROFILE, MEDIUM DUTY

The 700 Series mat combines the benefit of tread with aluminum scraping bars built in to each rail to keep your building cleaner. Available as surface-mounted or recessed.

FEATURES:

- LDPE hinges that cushion each tread rail are quieter than aluminum hinges.
- Mat rolls up compactly for cleaning.
- Drainage holes between tread rails allows moisture and dirt to fall below mat.

PRODUCT DETAILS:

Rail Material: 6063-T6 extruded aluminum alloy

Frame Material:

EFRA & EFRT: 6063-T6 extruded aluminum alloy

EFSA & EFRC: 6063-T5 extruded aluminum alloy

EFSV: Vinyl tapered

EFST: Vinyl tapered frame with integral recycled rubber tray.

Depth: 3/8" (9.5 mm)

Standard Finish: Mill.

Tread Spacing: 2" (50.8 mm) on center with 6 treads per foot in the direction of travel.

Spacing Between Rails: Heel-proof spacing of 3/16".

Rolling Wheel Load Rating: 350 lbs

NOTE:

Verify traffic direction - traffic to run perpendicular to rails.

Maximum single mat size not to exceed 12'-0" (3.66m) in width (dim "x") or 100 sq. ft.

If multiple sections, verify sectioning does not occur in traffic path.

EFRC, EFRA and EFSA: Vinyl filler to be trimmed in field for tight fit.

Mat dimensions allow for clearance between mat section(s) and frame(s) in width (dim "x").

Additional product information including installation instructions may be found at www.activarcpg.com/jl-industries



9702 Newton Ave S. Bloomington, MN 55431 | Many Locations Nationwide



JL INDUSTRIES

www.activarcpg.com

**Entrance Mat
Activ-Mat™ EM700 Series
Data Sheet**