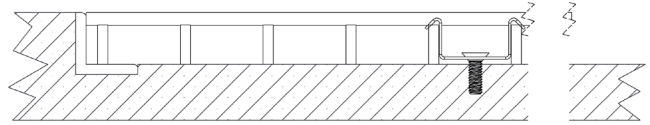


Installation & Maintenance Guide

GENERAL:

Before any installation is started, be sure to verify:

- Model of tread and frame
- Size of tread and frame
- That there are no visual defects or damage from shipment



*NOTE: No returns will be accepted after the material has been installed. Failure to follow these installation instructions may void your warranty.

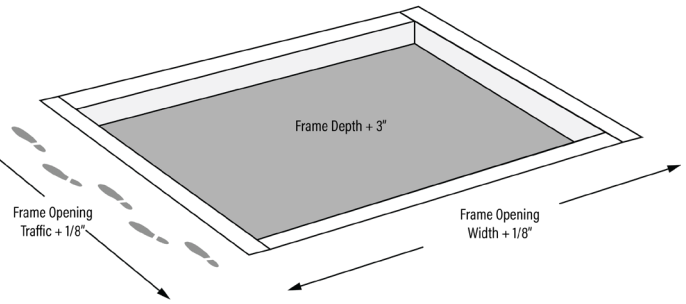
INSTALLATION:

Frame Installation Instructions

STEP 1: Prepare the Opening

A flat recess and accurately installed frames are critical to the overall performance of the grille. Utilize a self-leveling compound (provide by others) if necessary to ensure a level recess.

Determine the correct depth of the recess. The (height) outside of the frame must be flush with the finished floor surface. Make the recess the appropriate depth and slightly longer and wider than the frames to allow room to maneuver.



STEP 2: Install the Frame in Prepared Opening

Smaller frames are pre-welded and ready to install. For larger installations, corner sections are welded, and frame lengths are provided in sections.

1. Assemble the sections as necessary.
2. Position the pre-cut and welded frame members in the opening. If frames lengths are provided in sections, frame pieces are to butt up against each other. Mending plates will be provided to hold the frame together during framing.
3. Mark the position of the anchor bolt holes where indicated in bottom of the frame.
4. Remove the frame and drill 3/8" holes 1-1/2" deep, and tap in the provided anchors. Secure the frame with the anchor bolts provided. Before Step 5(mortaring), check the measurements of the frame against the shop drawings in several locations to make sure that the sides are parallel, and the sizes are correct.

The grille will not fit if the frame is not installed as indicated on the shop drawings.

5. Pour cement mortar around the outside edges of the frame to be level with the unfinished floor and the center in sufficient quantity to be level with the inside lip of the frame. Utilize a self-leveling compound (by others) if necessary to ensure a level recess. The floor must be flat and level with 1/8" over 10'-0" to ensure proper installation and provide a stable surface for the frame to rest on.

6. When the cement has hardened, install plywood or other material in the recess to protect the edges of the frame until it is time to install the grilles. Wait to install the grilles until the building is ready for use.



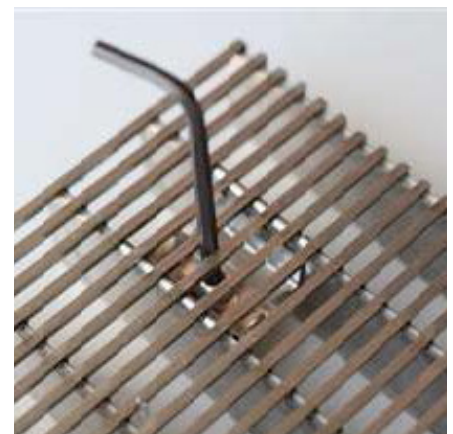
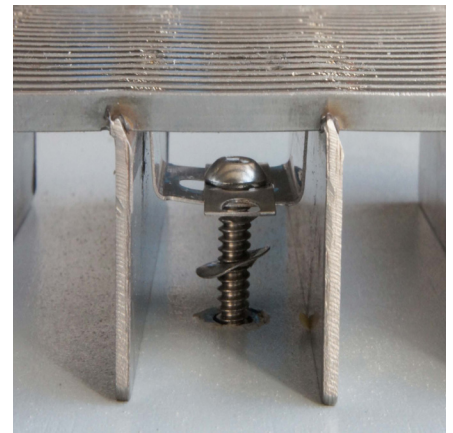
9702 Newton Ave S. Bloomington, MN 55431 | Many Locations Nationwide

800-554-6077 952-835-2218 sales@activarcpg.com www.activarcpg.com

Installation & Maintenance Guide

Grille Installation Instructions:

1. Remove the plywood or other filler from the recess and clean the recess thoroughly. Note that debris will cause irregularities in the recess that will in turn cause the grille to rock or create a tripping hazard.
2. Remove any mending plates that were used to join the frame sections during installation of frame.
3. Mounting clips and sliding lock-downs are pre-installed on the underside of the grating.
4. Place the grille sections in position within the recess. Refer to the shop drawings to determine the correct location of each section. Note that the grille sections are not interchangeable.
5. Using the holes in the mounting clips and sliding lock-downs as guides, mark the concrete in the center of each where a masonry anchor is to be installed.
6. Remove the grating and set aside, keeping in mind sections are not interchangeable and must be re-installed in identical locations after the anchors are placed. Drill with a 1/2" masonry drill to the proper depth to fit anchor.
7. Tap masonry anchors into the holes.
8. After anchors have set in place and cured, carefully re-install panels in original positions
9. Feed the 1/4-20 x 1" stainless screw through the tab and use a Phillips screw drive to tighten cap to hold panels in position.
10. Do not allow traffic of any kind on the grilles or frames during the drying
11. To avoid damage, grille sections should not be set in place until the end of construction. However if they must be set in place before construction ends they must be covered with protective plywood.
12. Save the installation and maintenance instructions and include them with the closeout documentation for the owner and maintenance personnel/



MAINTENANCE:

The location and traffic load will determine the frequency of cleaning required. If damaged, treads can be replaced at www.activarcpg.com

Stainless steel grilles themselves are virtually maintenance free. Surface wires can be cleaned with a nonferrous cleaner such as 3M's Scotch Brite.

DO NOT USE STEEL WOOL OR ABRASIVE PADS: The steel in these products will embed in the wires and subsequently rust.

We do not recommend removing the grilles for cleaning. A high-power vacuum will often remove dust from the recess. If removing a grille is absolutely necessary, it is critical the removal and installation be performed by a trained professional.

IF GRILLE REMOVAL IS ABSOLUTELY NECESSARY, CAREFULLY REMOVE THE SECTION(S) AS FOLLOWS:

1. If the grille is in more than one section, mark the sections and their locations. Sections are not interchangeable and must be reinstalled in the correct locations.
2. Remove the grille section(s) by using a long-shaft Allen wrench. The Allen wrench should be long enough to reach hidden lock-downs when inserting it between the surface wires.
DO NOT ATTEMPT TO REMOVE THE GRILLES' ALLEN BOLT LOCK-DOWNS BY PRYING APART THE SURFACE WIRES.
3. Remove the grille sections and clean the recess. Use a vacuum or broom to clean the surface wires.
4. Reinstall the grille sections, following the original installation instructions and using a longshaft Allen wrench. Secure the grille, with the hidden lock-downs, to the floor. **DO NOT PRY APART SURFACE WIRES TO REACH THE HIDDEN LOCK-DOWNS.**



9702 Newton Ave S. Bloomington, MN 55431 | Many Locations Nationwide

800-554-6077 952-835-2218 sales@activarcpg.com www.activarcpg.com

Installation & Maintenance Guide