

ENTRANCE MAT - Activ-Mat™ EM800 Series with EFRT8 Frame - Aluminum Mat with Recessed Threshold Frame

SPECIFICATIONS:

Aluminium Roll-Up Entrance Mat with Aluminum Hinges

Material: 6063-T6 extruded aluminum alloy tread rails and frames.

Depth: 3/8" (9.5 mm).

Frame Width: 1-1/8" (28.6mm)

Standard Finish: Mill.

Tread Spacing: 2" (50.8 mm) on center with 6 treads per foot in the direction of travel.

Spacing Between Rails: Heelproof spacing of 3/16".

Rolling Wheel Load Rating: 350 lbs

NOTE:

Verify traffic direction - traffic to run perpendicular to rails.

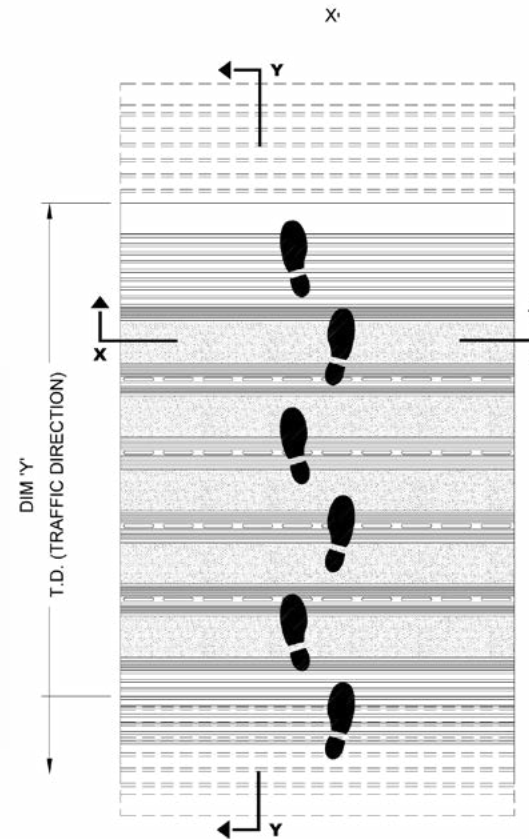
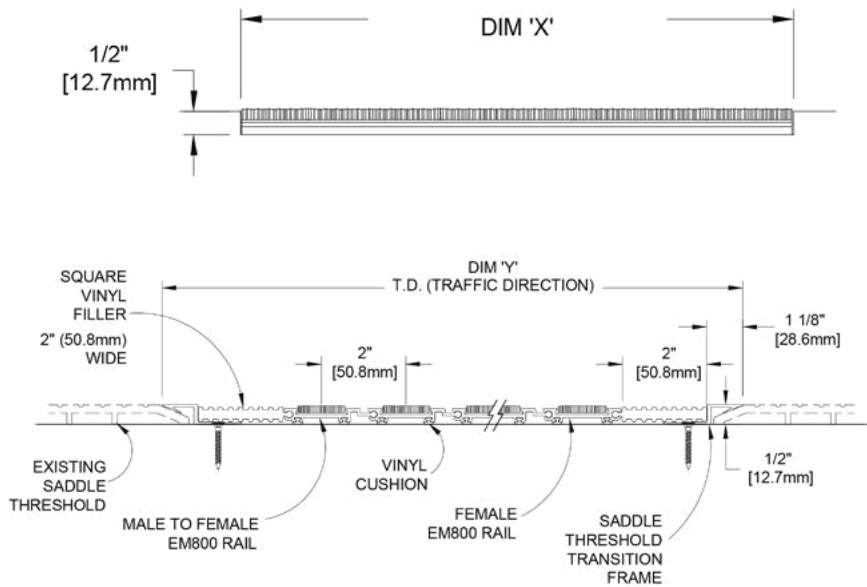
Maximum single section size not to exceed 12'-0" (3.66m) in width (dim "x") or 100 sq. ft.

If multiple sections, verify sectioning does not occur in traffic path.

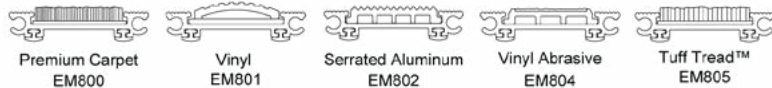
Vinyl filler to be trimmed in field for tight fit

Mat dimensions allow for clearance between mat section(s) and frame(s) in width (dim "x").

Additional product information including installation instructions may be found on our website.



ACTIV-MAT 800 SERIES INSERTS



QTY	LOCATION	DIMENSION "X" <i>Width</i>	DIMENSION "Y" <i>Length</i>	FINISH	TREAD OPTIONS	TREAD COLOR	NOTES



800-554-6077
 sales@activarcpg.com
 www.activarcpg.com

9702 Newton Ave S. Bloomington, MN 55431 | Many Locations Nationwide

Distributor:	Project:
Contractor:	Approved By:
Date:	Architect:
Scale: N/A	Pages: 1 of 1
Item #:	