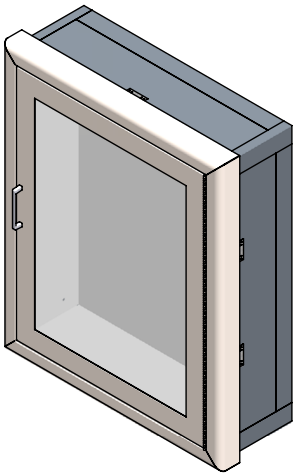
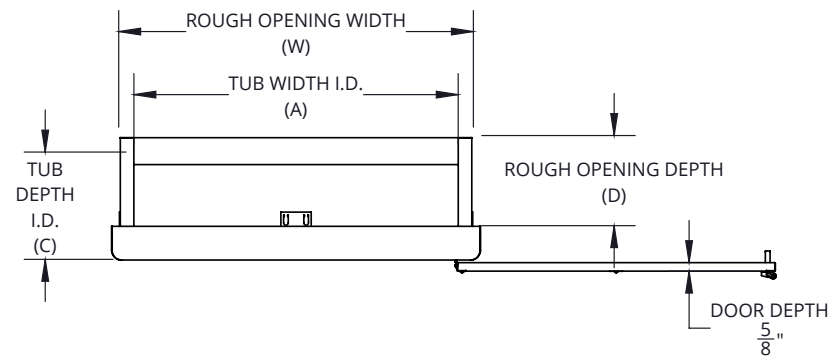


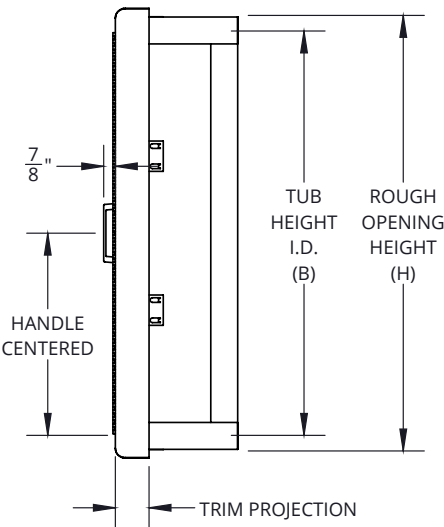
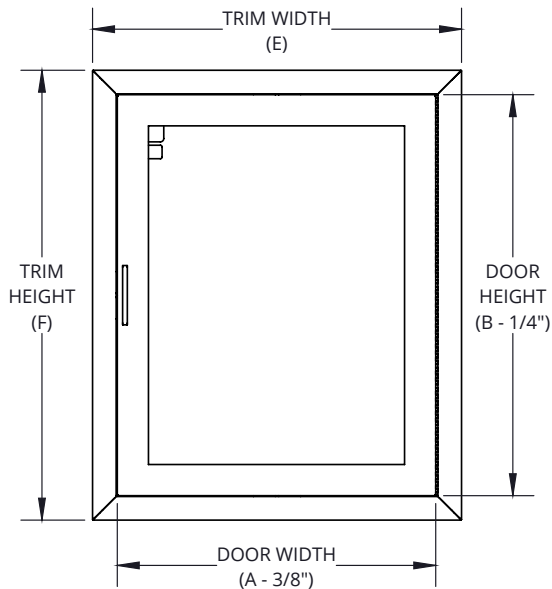


FIRE PROTECTION CABINET - FIRE EXTINGUISHER, VALVE, HOSE, & COMBINATION CABINETS:
CROWNLINE™ FIRE-FX2™ SERIES - Stainless Steel

Crownline cabinets provide protection and accessibility for critical fire department connections including valves and hoses. The product offering includes; fire department valve cabinets, fire hose cabinets and combinatin cabinets. Combinations include both hoses and valves or a hose or valve in combination with a fire extinguisher.



C6137F10FX2



SPECIFICATIONS:

- Tub Material & Finish:** Steel white powder coat
Knockouts: Hose and valve cabinets include dual knockouts for 1-½" and 2-½" diameter pipe located each side of tub, except for surface-mount and fire-rated, that are by others during installation
Trim Material & Finish: 304 Stainless steel #4
Trim Projection: 3/8" Flat square, 1-½" square, 2-½" rolled
Door Material & Finish: 304 Stainless steel #4
Door Style: Full view
Glazing: .090" Clear acrylic
Insulation: Foil-faced mineral wool
Hinge: Continuous hinge, stainless steel, opens to 180°
Hardware: Zinc plated pull handle with roller catch or cylinder Saf-T-Lok™
ADA Compliance: Cabinet cannot protrude more than 4" and the handle cannot be mounted more than 48" above finished floor. Surface-mount and 4-½" trim style do not comply with ADA.

FIRE-RATINGS:

UL classified and labeled up to 2 hours in accordance with UL 1479 (ASTM-E814) and CAN/USC-S115.

OPTIONS:

- Tub:** 304 Stainless steel #4
Door: Vertical duo, solid, horizontal duo
Glazing: 1/8" clear tempered, 1/4" clear wired glass, 1/8" bronze acrylic, 1/8" gray acrylic, 1/4" clear laminated safety glass
Handles: Recessed handle
Alarms: Commander alarm, brigadier alarm, strobe alarm
Material: #6 Satin stainless steel, #7 polished stainless steel, #8 mirror stainless steel
Finish: Red, black, other powder coat colors
Lettering: Silkscreen, engraving, etching
Other: Shelf for 8000 series only

ADDITIONAL ACCESSORIES (sold separately)

Die cuts, decals, plastic signs
See supplemental submittals for more information on various options and accessories.

ADA CABINET MOUNTING HEIGHT:

Standard pull on G, E, W, L22 and B door styles with Saf-T-Lok are 3-½" higher than door center, so allow for that when mounting cabinet.
Standard Pull with no lock or flush pull are centered on door.

Interpretation of fire and building codes may vary. Consult with the local authority having jurisdiction (AHJ) to determine appropriate standards.



JL INDUSTRIES

7902 Newton Avenue S, Bloomington, MN 55431



800-554-6077



sales@activarcpg.com



www.activarcpg.com

Distributor:		Project:	
Contractor:		Approved By:	
Date:		Architect:	
Scale: N/A		Item#:	

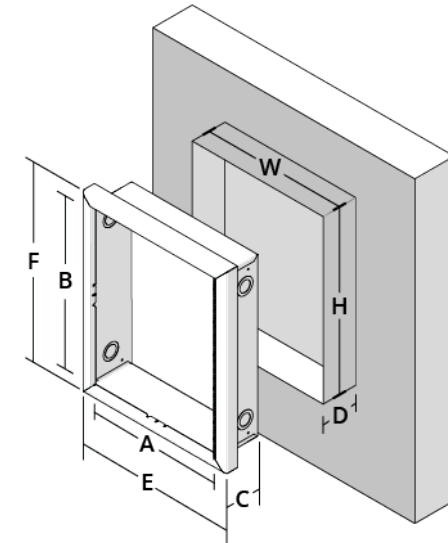


FIRE PROTECTION CABINET - FIRE EXTINGUISHER, VALVE, HOSE, & COMBINATION CABINETS: CROWNLINETM FIRE-FX2™ SERIES - Stainless Steel

QTY	MODEL & TRIM		ADA	TUB I. D.			TRIM O. D.		WALL ROUGH OPENING*			WT	COMPATIBLE FIRE EQUIPMENT
	MODEL	TRIM PROJECTION	≤4"	WIDTH (A)	HEIGHT (B)	DEPTH (C)	WIDTH (E)	HEIGHT (F)	WIDTH (W)	HEIGHT (H)	DEPTH (D)	LBS	
COMBINATION HOSE & FIRE EXTINGUISHER CABINET													
	C6035	3/8" flat square	✓	24"	30"	6"	27-3⁄8"	33-3⁄8"	26-5⁄16"	32-5⁄16"	6-15⁄16"	38	Combination Hose & FE: KOs fit 1-1⁄2", Hose Rack Unit with 50' or 75' Hose (HRA:050B, 050CH, 075B, 075CH) & Cosmic 2.5lb or Galaxy 2.5lb - 5lb Extinguisher
	C6036	1-1⁄4" square	✓	24"	30"	6"	27-3⁄8"	33-3⁄8"	26-5⁄16"	32-5⁄16"	5-15⁄16"	40	
	C6037	2-1⁄2" rolled	✓	24"	30"	6"	27-3⁄8"	33-3⁄8"	26-5⁄16"	32-5⁄16"	4-11⁄16"	41	
	C6235	3/8" flat square	✓	24"	34-3⁄4"	6"	27-3⁄8"	33-1⁄8"	26-5⁄16"	37-1⁄16"	6-15⁄16"	39	Combination Hose & FE: KOs fit 1-1⁄2" Hose Rack Unit - 100' Hose (HRA 100B, HRA100CH) & Cosmic 2.5lb or Galaxy 2.5lb - 5lb Extinguisher
	C6236	1-1⁄4" square	✓	24"	34-3⁄4"	6"	27-3⁄8"	33-1⁄8"	26-5⁄16"	37-1⁄16"	5-15⁄16"	41	
	C6237	2-1⁄2" rolled	✓	24"	34-3⁄4"	6"	27-3⁄8"	33-1⁄8"	26-5⁄16"	37-1⁄16"	4-11⁄16"	42	
	C6135	3/8" flat square	✓	24"	30"	8"	27-3⁄8"	33-3⁄8"	26-5⁄16"	32-5⁄16"	8-15⁄16"	46	Combination Hose & FE: KOs 1-1⁄2" & 2-1⁄2" Hose Rack Unit - 100' Hose (HRA 100B, HRA100CH) & 2.5lb or Galaxy 2.5lb - 5lb Extinguisher
	C6136	1-1⁄4" square	✓	24"	30"	8"	27-3⁄8"	33-1⁄8"	26-5⁄16"	32-5⁄16"	7-15⁄16"	47	
	C6137	2-1⁄2" rolled	✓	24"	30"	8"	27-3⁄8"	33-1⁄8"	26-5⁄16"	32-5⁄16"	6-11⁄16"	48	
FIRE HOSE CABINET													
	C6435	3/8" flat square	✓	24"	34-3⁄4"	8"	27-3⁄8"	33-1⁄8"	26-5⁄16"	37-1⁄16"	8-15⁄16"	48	Hose: KOs 1-1⁄2" & 2-1⁄2" Hose Rack Unit 100' Hose (HRA100B-2.5)
	C6436	1-1⁄4" square	✓	24"	34-3⁄4"	8"	27-3⁄8"	33-1⁄8"	26-5⁄16"	37-1⁄16"	7-15⁄16"	49	
	C6437	2-1⁄2" rolled	✓	24"	34-3⁄4"	8"	27-3⁄8"	33-1⁄8"	26-5⁄16"	37-1⁄16"	6-11⁄16"	50	
	C6635	3/8" flat square	✓	24"	38-3⁄4"	8"	27-3⁄8"	42-1⁄8"	26-5⁄16"	41-1⁄16"	8-15⁄16"	54	Hose: KOs 1-1⁄2" & 2-1⁄2" Hose Rack Unit 125' Hose (HRA125B-2.5)
	C6636	1-1⁄4" square	✓	24"	38-3⁄4"	8"	27-3⁄8"	42-1⁄8"	26-5⁄16"	41-1⁄16"	7-15⁄16"	56	
	C6637	2-1⁄2" rolled	✓	24"	38-3⁄4"	8"	27-3⁄8"	42-1⁄8"	26-5⁄16"	41-1⁄16"	6-11⁄16"	58	
COMBINATION HOSE & VALVE OR HOSE & FIRE EXTINGUISHER CABINET													
	C6335	3/8" flat square	✓	30"	30"	8"	33-3⁄8"	33-3⁄8"	32-5⁄16"	32-5⁄16"	8-15⁄16"	51	Hose & Valve or Hose & Extinguisher: KOs 1-1⁄2" & 2-1⁄2", Hose Rack Unit 50' or 75' Hose & Valve or Hose Rack Unit 50' or 75' Hose & Cosmic or Galaxy Extinguisher
	C6336	1-1⁄4" square	✓	30"	30"	8"	33-3⁄8"	33-3⁄8"	32-5⁄16"	32-5⁄16"	7-15⁄16"	53	
	C6337	2-1⁄2" rolled	✓	30"	30"	8"	33-3⁄8"	33-3⁄8"	32-5⁄16"	32-5⁄16"	6-11⁄16"	56	
	C6535	3/8" flat square	✓	32-3⁄4"	34-3⁄4"	8"	36-1⁄8"	38-1⁄8"	35-1⁄16"	37-1⁄16"	8-15⁄16"	60	Hose & Valve or Hose & Extinguisher: KOs 1-1⁄2" & 2-1⁄2" Hose Rack Unit 100' Hose & Valve or Hose Rack Unit 100' & Cosmic or Galaxy Extinguisher
	C6536	1-1⁄4" square	✓	32-3⁄4"	34-3⁄4"	8"	36-1⁄8"	38-1⁄8"	35-1⁄16"	37-1⁄16"	7-15⁄16"	61	
	C6537	2-1⁄2" rolled	✓	32-3⁄4"	34-3⁄4"	8"	36-1⁄8"	38-1⁄8"	35-1⁄16"	37-1⁄16"	6-11⁄16"	64	
	C7235	3/8" flat square	✓	32-3⁄4"	38-3⁄4"	8"	36-1⁄8"	42-1⁄8"	35-1⁄16"	41-1⁄16"	8-15⁄16"	63	Hose & Valve or Hose & Extinguisher: KOs 1-1⁄2" & 2-1⁄2" Hose Rack Unit 125' Hose & Valve or Hose Rack Unit 125' & Cosmic or Galaxy Extinguisher
	C7236	1-1⁄4" square	✓	32-3⁄4"	38-3⁄4"	8"	36-1⁄8"	42-1⁄8"	35-1⁄16"	41-1⁄16"	7-15⁄16"	66	
	C7237	2-1⁄2" rolled	✓	32-3⁄4"	38-3⁄4"	8"	36-1⁄8"	42-1⁄8"	35-1⁄16"	41-1⁄16"	6-11⁄16"	70	

--** for 6" depth tubs with 2-1/2" rolled trim, knockouts by others during installation back or side of tub, as determined by field conditions.

*Confirm wall rough opening depth prior to ordering



SQUARE TRIM STYLE & PROJECTION	
RECESSED	SEMI-RECESSED
5	6
3/8" Flat Square	1-1/4" Square

ROLLED TRIM STYLE & PROJECTION SEMI-RECESSED
7
2-1/2" or 3" Rolled

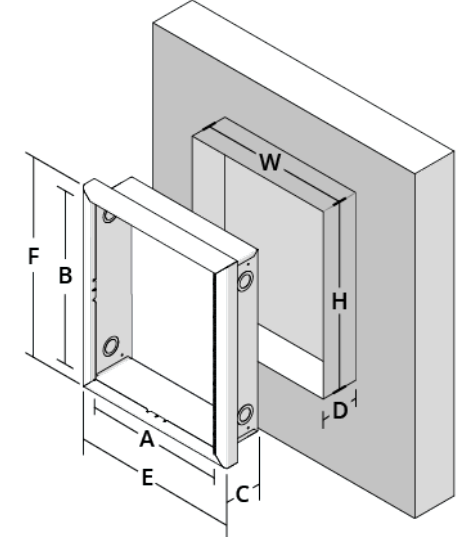


FIRE PROTECTION CABINET - FIRE EXTINGUISHER, VALVE, HOSE, & COMBINATION CABINETS: CROWNLINE™ FIRE-FX2™ SERIES - Stainless Steel

QTY	MODEL & TRIM		ADA	TUB I. D.			TRIM O. D.		WALL ROUGH OPENING*			WT	COMPATIBLE FIRE EQUIPMENT
	MODEL	TRIM PROJECTION	≤4"	WIDTH (A)	HEIGHT (B)	DEPTH (C)	WIDTH (E)	HEIGHT (F)	WIDTH (W)	HEIGHT (H)	DEPTH (D)	LBS	
VALVE CABINET													
	C8535	3/8" flat square	✓	18"	18"	8"	21-3⁄8"	21-3⁄8"	20-5⁄16"	20-5⁄16"	8-15⁄16"	28	Valve: KOs 1-1/2" & 2-1/2" 1 centered, each side of tub Fire Department Valve
	C8536	1-¼" square	✓	18"	18"	8"	21-3⁄8"	21-3⁄8"	20-5⁄16"	20-5⁄16"	7-15⁄16"	30	
	C8537	2-½" rolled	✓	18"	18"	8"	21-3⁄8"	21-3⁄8"	20-5⁄16"	20-5⁄16"	6-11⁄16"	32	
	C8435	3/8" flat square	✓	18"	18"	10"	21-3⁄8"	21-3⁄8"	20-5⁄16"	20-5⁄16"	10-15⁄16"	32	
	C8436	1-¼" square	✓	18"	18"	10"	21-3⁄8"	21-3⁄8"	20-5⁄16"	20-5⁄16"	9-15⁄16"	34	
	C8437	2-½" rolled	✓	18"	18"	10"	21-3⁄8"	21-3⁄8"	20-5⁄16"	20-5⁄16"	8-11⁄16"	36	
COMBINATION DUAL SIDE-BY-SIDE VALVE & FIRE EXTINGUISHER CABINET or TWO VALVES CABINET													
	C8735	3/8" flat square	✓	26"	26"	8"	29-3⁄8"	29-3⁄8"	28-5⁄16"	28-5⁄16"	8-15⁄16"	51	Dual side by side Valve & Extinguisher or 2 Valves: KOs 1-1/2" & 2-1/2" 1 centered, each side of tub Fire Department Valve & Cosmic or Galaxy 2½lb -10lb Fire Extinguisher or 2 Fire Department Valves
	C8736	1-¼" square	✓	26"	26"	8"	29-3⁄8"	29-3⁄8"	28-5⁄16"	28-5⁄16"	7-15⁄16"	51	
	C8737	2-½" rolled	✓	26"	26"	8"	29-3⁄8"	29-3⁄8"	28-5⁄16"	28-5⁄16"	6-11⁄16"	53	
	C8635	3/8" flat square	✓	26"	26"	10"	29-3⁄8"	29-3⁄8"	28-5⁄16"	28-5⁄16"	10-15⁄16"	54	
	C8636	1-¼" square	✓	26"	26"	10"	29-3⁄8"	29-3⁄8"	28-5⁄16"	28-5⁄16"	9-15⁄16"	54	
	C8637	2-½" rolled	✓	26"	26"	10"	29-3⁄8"	29-3⁄8"	28-5⁄16"	28-5⁄16"	8-11⁄16"	56	
COMBINATION VALVE & FIRE EXTINGUISHER CABINET													
	C8035	3/8" flat square	✓	16"	40"	9"	19-3⁄8"	43-3⁄8"	18-5⁄16"	42-5⁄16"	9-15⁄16"	45	Valve & Extinguisher: KOs 1-1/2" & 2-1/2" Fire Department Valve & Cosmic, Galaxy Fire Extinguisher, Mercury, Grenadier Sentinel 5lb -10lb
	C8036	1-¼" square	✓	16"	40"	9"	19-3⁄8"	43-3⁄8"	18-5⁄16"	42-5⁄16"	8-15⁄16"	45	
	C8037	2-½" rolled	✓	16"	40"	9"	19-3⁄8"	43-3⁄8"	18-5⁄16"	42-5⁄16"	7-11⁄16"	47	

--** for 6" depth tubs with 2-1/2" rolled trim, knockouts by others during installation back or side of tub, as determined by field conditions.

*Confirm wall rough opening depth prior to ordering



SQUARE TRIM STYLE & PROJECTION	
RECESSED	SEMI-RECESSED
5	6
3/8" Flat Square	1-1/4" Square

ROLLED TRIM STYLE & PROJECTION
SEMI-RECESSED
7
2-1/2" or 3" Rolled



FIRE PROTECTION CABINET - FIRE EXTINGUISHER, VALVE, HOSE, & COMBINATION CABINETS: CROWLINE™ FIRE-FX2™ SERIES - Stainless Steel

	SOLID	FULL VIEW	VERTICAL DUO	HORIZONTAL DUO	SMALL WINDOW	CENTER HORIZONTAL DUO
STANDARD PULL	S21	F	V	D	(Not available)	
STANDARD PULL & SAF-T-LOK	L22	G	W	E	B	A
NO HANDLE & SAF-T-LOK	L24					

DOOR/LATCH STYLE			GLAZING/DOOR TYPE		
MODEL	DESCRIPTION		MODEL	DESCRIPTION	
F	Full view		10	.09" Clear acrylic	
G	Full view w SAF-T-LOK™		13	1/4" Clear wired glass	
D	Horizontal duo		15	1/8" Bronze acrylic	
E	Horizontal duo w SAF-T-LOK™		16	1/8" Gray acrylic	
A	Center duo panel w SAF-T-LOK™		17	1/8" Clear tempered glass	
V	Vertical duo		18	1/4" Clear safety glass	
W	Vertical duo w SAF-T-LOK™		21	No glazing, no lock w pull (S21 only)	
B	Small view window w SAF-T-LOK™		22	No glazing w SAF-T-LOK™ w pull (L22 only)	
S	Solid (no glazing)		24	No glazing w SAF-T-LOK™ and no pull (L24 only)	
L	Solid (no glazing) w SAF-T-LOK™				

HANDLE/LATCH OPTIONS (installed at an additional cost)			ALARM OPTIONS (installed at an additional cost)		
MODEL	DESCRIPTION		MODEL	DESCRIPTION	
A	Recessed handle		CA	Commander	
LH	Lever handle (not avail. with SAF-T-LOK™)		BA	Brigadier	
FM	Futura "FIRE" Mill		SA	Strobe	
FR	Futura "FIRE" Red				
FW	Futura "FIRE" White				

MATERIAL OPTIONS			FINISH OPTIONS		CUSTOM LETTERING OPTIONS (when manufactured at additional cost)			
	MODEL	DESCRIPTION		MODEL	DESCRIPTION		MODEL	DESCRIPTION
	F6	#6 Stainless steel finish		BK	Black door, trim, tub		SS	Silkscreen
	F7	#7 Stainless steel finish		R	Red door, trim, tub		ET	Etching on glass
	F8	#8 Stainless steel finish		COLOR - OTHER (please specify)			EN	Engraving on metal
			Door			LETTERING - OTHER (please specify)		
			Trim				Other	
			Tub			Refer to supplemental submittal for more options		

HANDLE/LATCH OPTIONS (sold separately)

QTY	MODEL	DESCRIPTION
	PUF	Futura "FIRE" Mill
	PUFR	Futura "FIRE" Red
	PUFW	Futura "FIRE" White
	PUCH	Chrome pull handle

PLASTIC SIGNS (sold separately)

QTY	MODEL	DESCRIPTION
	22S	FE, 3D ANGLE, 4" x 12"
	23S	FE, 3D TENT, 4" x 18"
	24S	FE, 3D TENT, 5" x 6"
	25S	FE, FLUSH, 4" x 12"

LETTERING (sold separately)

QTY	MODEL	"FIRE EXTINGUISHER" DESCRIPTION
	LDCVRFE	DIE CUT, VERT, RED, 3/4" x 18"
	LDCVWFE	DIE CUT, VERT, WHITE, 3/4" x 18"
	LDCVBFE	DIE CUT, VERT, BLACK, 3/4" x 18"
	LDVRFE	DECAL, VERT, RED, 3/4" x 18"
	LDVBFE	DECAL, VERT, BLACK, 3/4" x 18"
	LDVWFE	DECAL, VERT, WHITE, 3/4" x 18"
	LDCVRFE-ESM-A	DIE CUT, VERT, RED, (fits 81 tub), 3/4" x 14"
	LDCHRFE-2	DIE CUT, HORZ, RED, 2" HIGH, 4-1/2" x 21"
	Other	

Refer to supplemental submittals for information on more options and accessories.

Refer to supplemental submittal for more options

It is the responsibility of the customer to communicate specifications and product performance requirements that are needed for their application. This document is intended to convey potential product configurations and offerings. It is not to be used to imply or represent a specification or rating of finished products shipped. Detailed, specific submittals can be created upon request. It is the responsibility of the customer to specify product accordingly to comply with local laws, codes, and ordinances.