

SUBMITTAL: PANORAMA™ ALUMINUM FIRE-FX2™ FIRE EXTINGUISHER CABINETS

PAGE 1 OF 2

The Panorama Cabinet Features a Frameless Door of Clear Polycarbonate or Opaque Textured Acrylic with Many Lettering Options

Door & Trim Construction: Flush acrylic cabinet doors are attached by a continuous hinge and equipped with zinc-plated handle and roller catch. 1-3/4" trim on cabinet of clear anodized aluminum.

Trim Style & Depth: Recessed 3/8" flat trim, *Semi Recessed* - 1-1/4", 1-1/2" Square Edge or 2-1/2", 3", 4", 4-1/2" Rolled Edge (4" has recessed pull). *Surface-mount* models have a square edge. Rolled edge models are constructed of mechanically-joined extrusions, except for models 1827 & 1027 which are die formed, *providing an attractive, smooth, rounded corner unique to the JL line of cabinets!*

Tub: The tub is constructed of cold rolled steel with white powder-coat finish standard. Tub forms a 1.56" wide flange to cover cut edges of wallboard Fire-resistant material is attached to the exterior of the tub.

Fire Rating: Fire-FX2™ cabinets are UL listed and labeled as an approved membrane penetration firestop system for up to 2 hours in accordance with UL 1479 (ASTM-E814) and CAN/ULC-S115, when properly installed in a wall assembly according to installation instructions.

STEP 1: SELECT MODEL NUMBER AND QUANTITY ON CHART (refer to chart on pg 2)

- A. Determine Trim Style according to wall depth.
B. Determine Tub I.D. according to size most suited for extinguisher and wall opening.

STEP 2: SELECT DOOR STYLE

(Check one box below)

- ☐ **C70** Clear 3/16" Unlettered Smooth Polycarbonate
☐ **C71** Clear 3/16" Unlettered Smooth Polycarbonate & Saf-T-Lok™
☐ **P** Identity: 3/16" Textured Obscure Acrylic with Lettering
☐ **Q** Identity: 3/16" Textured Obscure Acrylic with Lettering & Saf-T-Lok

STEP 3 - P&Q DOORS SELECT LETTERING STYLE View lettering styles on page 2 or:

<input type="checkbox"/> 40 Vert, Black Bkgd, White Lettering	<input type="checkbox"/> 45 Horiz, Black Bkgd, White Lettering	<input type="checkbox"/> 50 Ascend, Black Bkgd, White Lettering
<input type="checkbox"/> 41 Vert, Red Bkgd, White Lettering	<input type="checkbox"/> 46 Horiz, Red Bkgd, White Lettering	<input type="checkbox"/> 51 Ascend, Red Bkgd, White Lettering
<input type="checkbox"/> 42 Vert, White Bkgd, Black Lettering	<input type="checkbox"/> 47 Horiz, White Bkgd, Black Lettering	<input type="checkbox"/> 52 Ascend, White Bkgd, Black Lettering
<input type="checkbox"/> 43 Vert, White Bkgd, Red Lettering	<input type="checkbox"/> 48 Horiz, White Bkgd, Red Lettering	<input type="checkbox"/> 53 Ascend, White Bkgd, Red Lettering

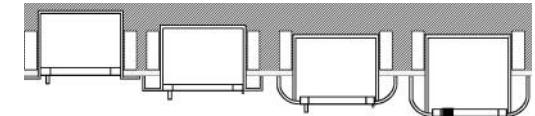
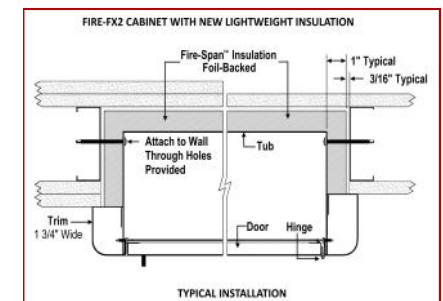
STEP 4: OPTIONAL FEATURES AT ADDED COST (SELECT ANY)

- ☐ Futura "Fire" Handle ____ Mill Alum-(PUF) ____ Red ____ White
☐ Flush Pull Handle for "P" or "Q" Style Doors Only (PRH)
☐ Polished Chrome Pull (PUCH)
☐ Optional Dark Bronze Anodized Color Finish: (with matching pull)
☐ Optional Tub Color: ____ Black ____ Red
☐ (CA) Commander Alarm
☐ (BA) Brigadier Alarm




8127Q43FX2
2-1/2" Rolled Trim
Semi-Recessed
With Saf-T-Lok™

1826C70FX2
1-1/2" Square
Trim
Semi-Recessed



3/8" Flat Trim **1-1/2" Square Trim** **2-1/2", 3" Rolled Edge** **4" Rolled Edge with Recessed Pull Standard**

It is the responsibility of the customer to communicate specifications and product performance requirements that are needed for their application. This document is intended to convey potential product configurations and offerings. It is not to be used to imply or represent a specification or rating, of finished products shipped. Detailed, specific submittals can be created upon request. It is the responsibility of the customer to specify product accordingly to comply with local laws, codes, and ordinances.

 JL INDUSTRIES	Distributor:	Quantity:
	Contractor:	Approved By:
	Model #:	Architect:
	Project:	Date: © 2023 Activar Construction Products Inc
HEADQUARTERS: 9702 NEWTON AVE S, BLOOMINGTON, MN 55431 PH: 800-554-6077 EMAIL: SALES@ACTIVARCPG.COM WWW.ACTIVARCPG.COM MANUFACTURING: BLOOMINGTON, MN & COMMERCE, CA WAREHOUSES: SEE WEBSITE FOR LOCATIONS 5/25/2023		

SUBMITTAL: PANORAMA ALUMINUM FIRE-FX FIRE EXTINGUISHER CABINETS

PAGE 2 OF 2

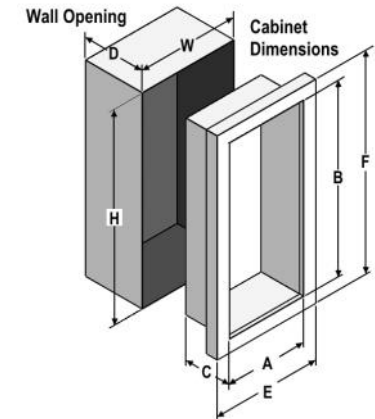
TRIM & DOOR SERIES #			Tub I.D.			Frame O.D.		FX Wall Opening			Fits Extinguishers
QTY	Model	Trim Style(in)	A	B	C	E	F	W	H	D	
	8125	Flat trim •	9	18	5 1/2	12 3/8	21 3/8	11 5/16	20 5/16	6 7/16	Cosmic & Galaxy 2 1/2-5-1/2 Mercury 2 1/2-5
	8126	1 1/2 Square•	9	18	5 1/2	12 3/8	21 3/8	11 5/16	20 5/16	5 3/16	
	8127	2 1/2 Rolled•	9	18	5 1/2	12 3/8	21 3/8	11 5/16	20 5/16	4 13/16	
	1825	Flat trim •	10 1/2	24	5 1/2	13 7/8	27 3/8	12 13/16	26 5/16	6 7/16	Cosmic & Galaxy 2 1/2-5-1/2 Mercury 2 1/2-5
	1826	1 1/2 Square•	10 1/2	24	5 1/2	13 7/8	27 3/8	12 13/16	26 5/16	5 3/16	
	1827	3 Rolled•	10 1/2	24	5 1/2	13 7/8	27 3/8	12 13/16	26 5/16	3 5/8	
	1822	4 Rolled*(• P or Q)	10 1/2	24	5 1/2	13 7/8	27 3/8	12 13/16	26 5/16	3 1/2	
	1828	4 1/2 Rolled	10 1/2	24	5 1/2	13 7/8	27 3/8	12 13/16	26 5/16	2 13/16	Cosmic & Galaxy 2 1/2-10 Mercury 2 1/2-5, Sentinel 5
	1025	Flat trim •	10 1/2	24	6	13 7/8	27 3/8	12 13/16	26 5/16	6 15/16	
	1026	1 1/2 Square•	10 1/2	24	6	13 7/8	27 3/8	12 13/16	26 5/16	5 11/16	
	1027	3 Rolled•	10 1/2	24	6	13 7/8	27 3/8	12 13/16	26 5/16	4	
	1022	4 Rolled*(• P or Q)	10 1/2	24	6	13 7/8	27 3/8	12 13/16	26 5/16	4	
	1028	4 1/2 Rolled	10 1/2	24	6	13 7/8	27 3/8	12 13/16	26 5/16	3 5/16	Any †Cosmic, †Galaxy, Mercury, Saturn or Grenadier P, Sentinel 5 & 10, Nebula 270
	2025	Flat trim •	12	27	7 3/4	15 3/8	30 3/8	14 5/16	29 5/16	8 11/16	
	2026	1 1/4 Square•	12	27	7 3/4	15 3/8	30 3/8	14 5/16	29 5/16	7 11/16	
	2027	2 1/2 Rolled•	12	27	7 3/4	15 3/8	30 3/8	14 5/16	29 5/16	7 1/16	
	2022	4 Rolled*(• P or Q)	12	27	7 3/4	15 3/8	30 3/8	14 5/16	29 5/16	5 3/4	
	2028	4 1/2 Rolled	12	27	7 3/4	15 3/8	30 3/8	14 5/16	29 5/16	5 1/16	Any †Cosmic, †Galaxy, Mercury, Saturn or Grenadier P, Sentinel 5-15, Nebula 250, 270, 272
	3025	Flat trim •	16	32	7 3/4	19 3/8	35 3/8	18 5/16	34 5/16	8 11/16	
	3026	1 1/4 Square•	16	32	7 3/4	19 3/8	35 3/8	18 5/16	34 5/16	7 11/16	
	3027	2 1/2 Rolled•	16	32	7 3/4	19 3/8	35 3/8	18 5/16	34 5/16	7 1/16	
	3022	4 Rolled*(• P or Q)	16	32	7 3/4	19 3/8	35 3/8	18 5/16	34 5/16	5 3/4	
	3028	4 1/2 Rolled	16	32	7 3/4	19 3/8	35 3/8	18 5/16	34 5/16	5 1/16	Two each of: any Cosmic, Galaxy, Mercury, Saturn or Grenadier P*, Sentinel 5
	4025	Flat trim •	20	27	7 3/4	23 3/8	30 3/8	22 5/16	29 5/16	8 11/16	
	4026	1 1/4 Square•	20	27	7 3/4	23 3/8	30 3/8	22 5/16	29 5/16	7 11/16	
	4027	2 1/2 Rolled•	20	27	7 3/4	23 3/8	30 3/8	22 5/16	29 5/16	7 1/16	
	4022	4 Rolled*(• P or Q)	20	27	7 3/4	23 3/8	30 3/8	22 5/16	29 5/16	5 3/4	
	4028	4 1/2 Rolled	20	27	7 3/4	23 3/8	30 3/8	22 5/16	29 5/16	5 1/16	

* 4" Rolled models have recessed pull for "P" and "Q" Doors and standard pull for "C" Styles

• Meets ADA Cabinet Projection Req.

† 20 lb Cosmic and Galaxy must be mounted on back of tub

ADA Cabinet Mounting Height: Standard Pull on C71 and Q Style Doors with Saf-T-Lok are 3 5/8" Higher than Door Center, so Allow for that When Mounting Cabinet.
Standard Pull with No Lock, or Flush Pull are Centered on Door.



PANORAMA "P" & "Q" DOOR GLAZING STYLES

