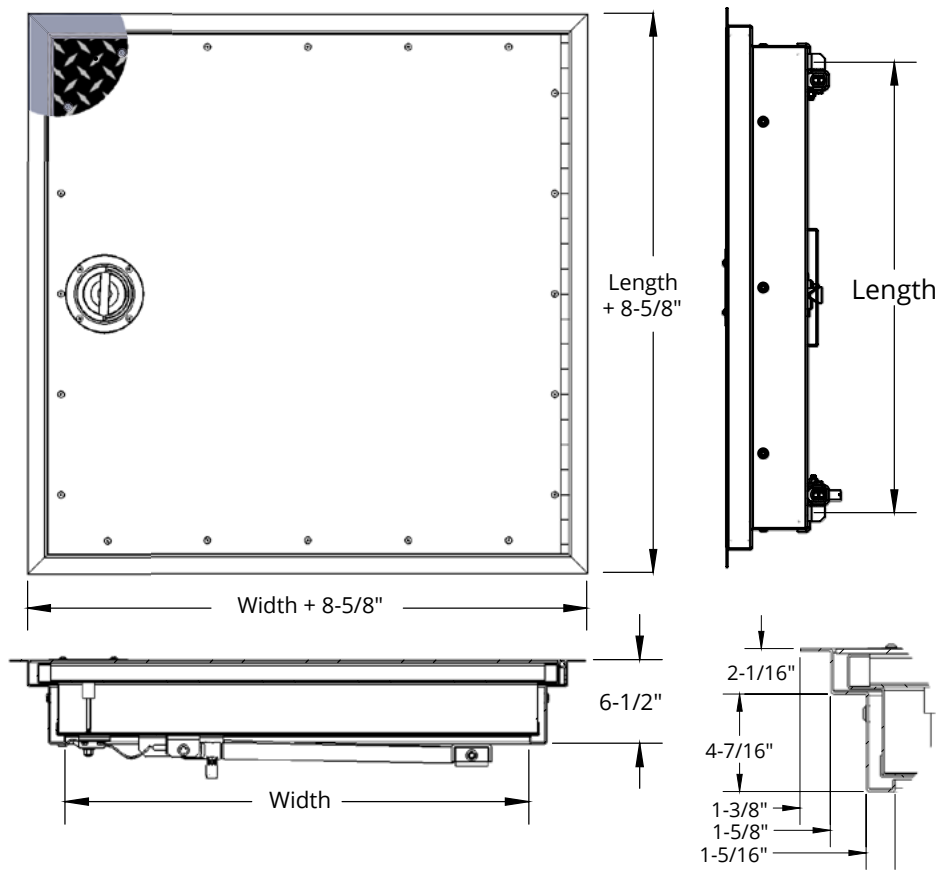


FLOOR DOOR -FHD SERIES - 1 HOUR FIRE-RATED FHD1R

Our FHD floor doors are designed to control the transmission of heat and flames when installed in a floor-ceiling assembly with a maximum temperature rise of 250 degrees Fahrenheit (121.1 degrees Celsius) for the specified rating periods of 1 hour.



SPECIFICATIONS:

Frame Material: 12 gauge (2.75 mm) galvanized steel with ash gray primer

Door Material: 1/4" (6.35 mm) Aluminum tread plate with mill finish and 14 gauge (1.99mm) galvanized steel frame and liner with ash gray primer

Insulation: High temperature ceramic fiber insulation

Hinge: Continuous stainless steel hinge

Latch: Stainless steel slam latch operated by a stainless steel recessed turn handle topside.

Spring/Cylinder: 316 stainless steel gas spring cylinders

Self Closing Mechanism: 165 degrees Fahrenheit (74 degrees Celsius) fusible link melts during fire automatically closing door without warning by releasing gas in cylinders. Not available on sizes larger than 42" (1067 mm) x 60" (1524 mm).

Installation Kit: Includes anchor straps for installing into concrete and screws for wood frame installations

Live Load: 150 lbs/sq ft (700 kg/sq metre)

Sizes:

Minimum Size: 26" x 24" (660 mm x 610 mm)

Maximum Size 1 Hour: 64" x 60" (1626 mm x 1524 mm)

Clear Opening:

Size width up to 30": Width minus 12" (305 mm) x Length

Size width over 30": Width minus 8.25" (210 mm) x Length

FIRE-RATING:





QAI Laboratories listed and labeled to NFPA-288 for 1, 2 and 3 hours for horizontal fire door assemblies

Testing Standards: NFPA 288

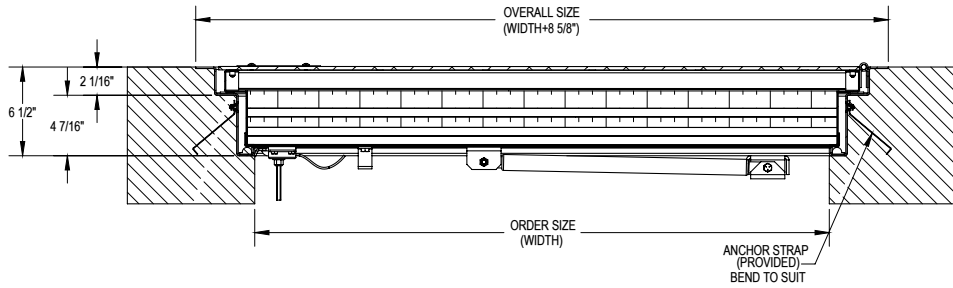
COMMON SIZES FHD1R

ORDER SIZE W x L (Inside Opening)		APPROX WEIGHT		ORDER SIZE W x L (Inside Opening)		APPROX WEIGHT*			
QTY	inches	mm	kg	lb	QTY	inches	mm	kg	lb
	26 x 24	660 x 610	58.97	130		36 x 48	914 x 1219	163.30	360
	30 x 30	762 x 762	85.28	188		36 x 54	914 x 1372	183.71	405
	30 x 48	762 x 1219	136.08	300		42 x 42	1067 x 1067	167.83	368
	36 x 24	914 x 762	81.65	180		42 x 60	1067 x 1524	233.60	525
	36 x 30	914 x 762	102.06	225		* 48 x 48	1219 x 1219	218	480
	36 x 36	914 x 914	123	270		* 64 x 60	1626 x 1524	363	800

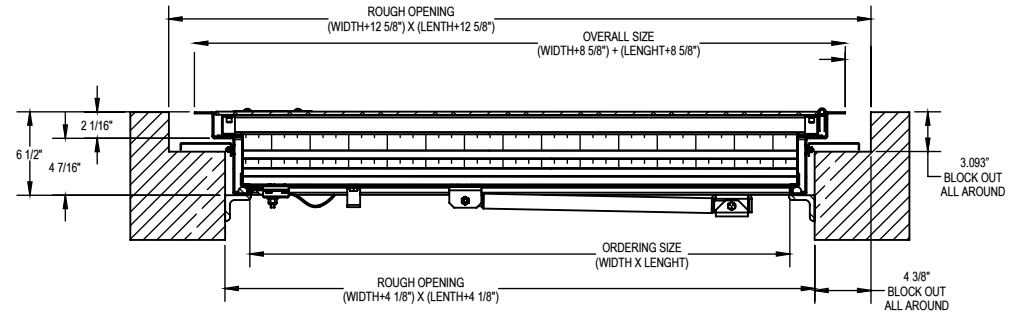
More Sizes Available Upon Request. *Self Closing Mechanism NOT available in this size.

	 800-554-6077  sales@activarcpg.com  www.activarcpg.com	Distributor:		Project:	
		Contractor:		Approved By:	
CANADA ONLY: 604-433-4243 info@maxammetal.com maxammetal.com		Date:		Architect:	
Scale: N/A		Pages: 1 of 3		Item #:	

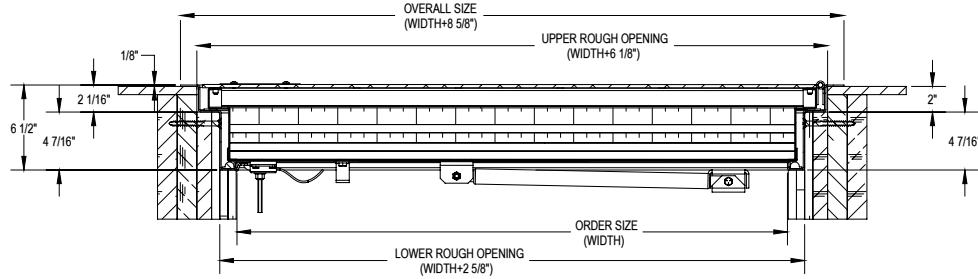
INSTALLATION: CONCRETE FHD SERIES - CAST-IN-PLACE



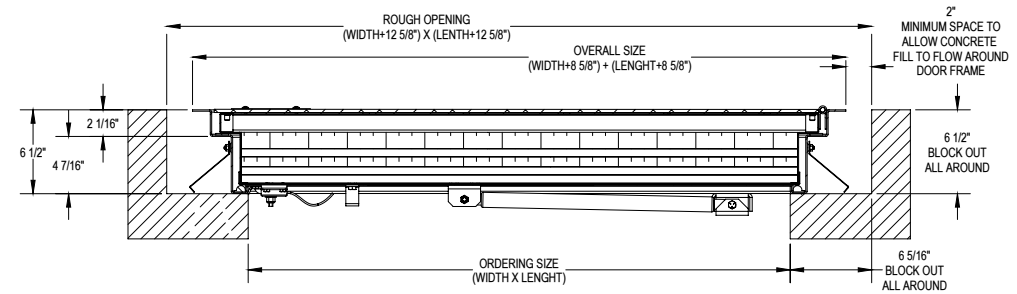
INSTALLATION: CONCRETE FHD SERIES - RETROFIT 1



INSTALLATION: WOOD FRAMING FHD SERIES (1 & 2 HOUR ONLY)



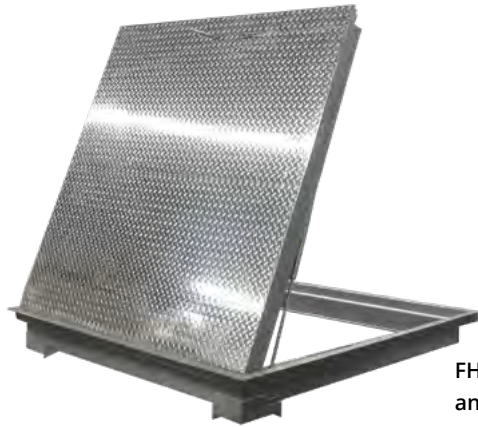
INSTALLATION: CONCRETE FHD SERIES - RETROFIT 2



See installation instructions for more detail

MADE-TO-ORDER FIRE-RATED FLOOR DOOR - FHD SERIES: INSULATED - EXAMPLE: FHD1RAT-3648U1PA

QTY	MODEL	FIRE-RATING	COVER MATERIAL	WIDTH	LENGTH	LATCH / LOCK	FRAME FINISH	OPTIONS
	FHD	1R 1-Hour	AT (1/4" Aluminum Tread Plate; mill finish, std) AP (1/4" Aluminum Smooth Plate, mill finish) AR (3/16" Aluminum Smooth Plate Recessed, mill finish) GT (3/16" Steel Tread Plate, primer ash gray finish)			U1 (Recessed turn handle top slam latch bottom) U2 (Removable tool and plug top slam latch bottom) J2 (Detention slam lock # Brinks 7066K-RH keyed top, door knob bottom)	PA (Primer, Ash Gray)	BT (Bituminous coating on frame exterior exposed to concrete) PH (Padlock hasp on bottom) SN (No self-closing mechanism at 165F) YB (Door painted yellow with black letters: "FIRE DOOR DO NOT STORE MATERIALS/EQUIPMENT ON SURFACE")

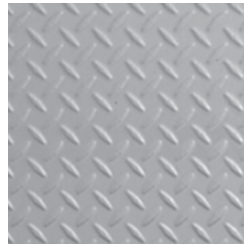


FHD with Standard 1/4"(6.35 mm) Aluminum Tread Plate and Optional Removable Tool

FLOOR DOOR OPTIONAL MATERIAL, LOCKS, LATCHES, HARDWARE, AND COLOR



1/4" (6.35 mm) Aluminum Tread Plate, Mill Finish (Standard)



3/16" (4.78 mm) Steel Tread Plate, Primer Ash Gray Finish



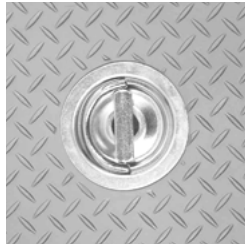
1/4" (6.35 mm) Smooth Aluminum Plate, Mill Finish



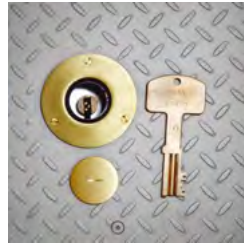
Smooth Aluminum Recessed, Mill Finish for 3/16" (6.35 mm) to accept flooring



Painted Lettering: Door panel painted in optional yellow with "FIRE DOOR DO NOT STORE MATERIALS/EQUIPMENT ON SURFACE" in black lettering



Recessed Stainless Steel Turn Handle Topside (Standard)



Detention Lock showing Topside Lock and Key



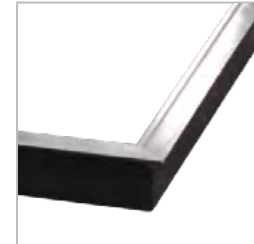
Detention Lock showing Underside Operable Knob



Padlock Hasp Underside



316 Stainless Steel Slam Latch with Topside Removable Tool and Underside Spoon Handle



Bituminous Coating