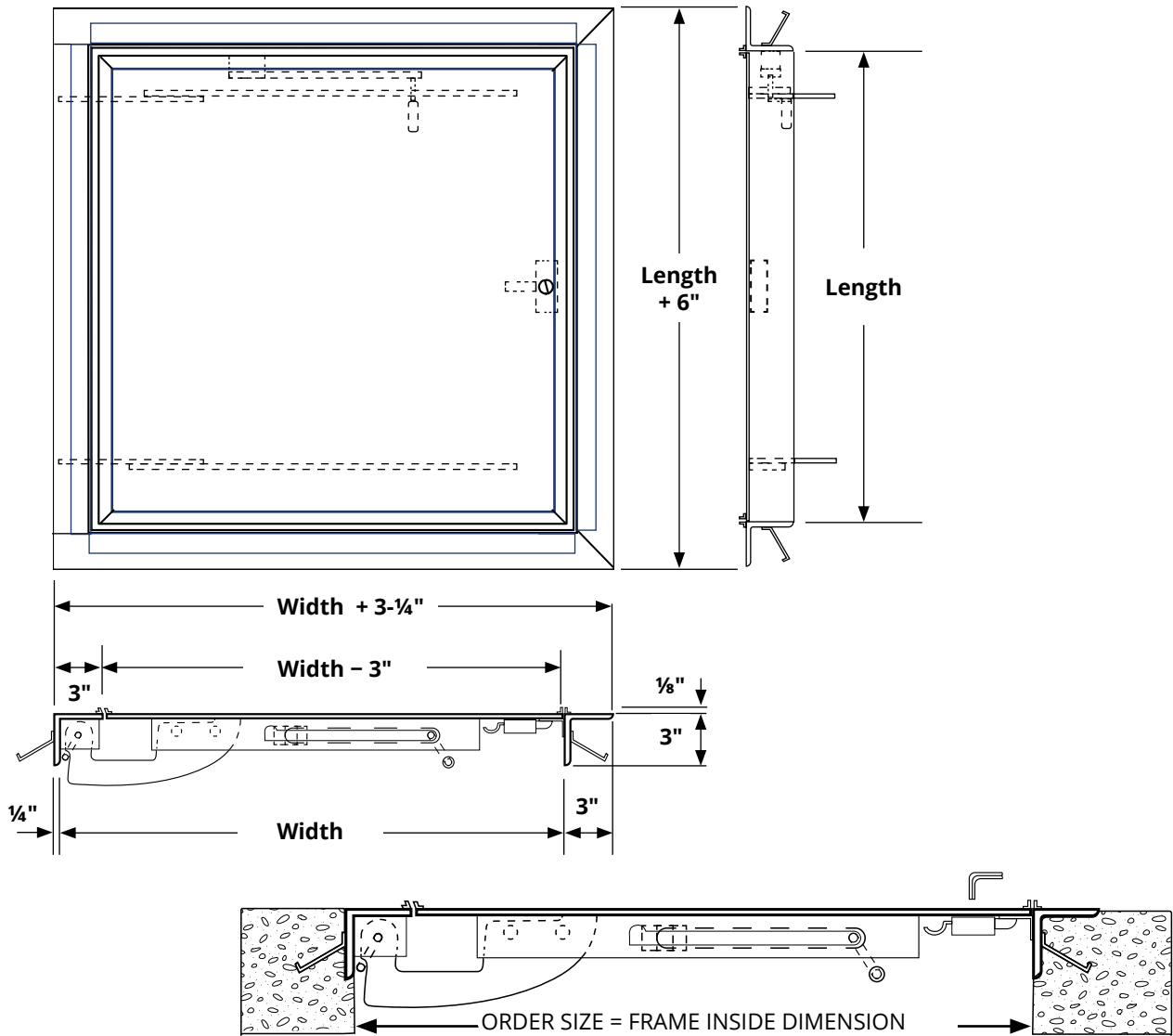


FLOOR DOOR - RECESSED FLOOR DOOR - FLDR

This architectural floor door is designed to accommodate the installation of 1/8" tile or carpet.



SPECIFICATIONS:

- Frame Material:** 1/4" x 3"x 3" angle aluminum with 1/8" lip for flooring infill and bolt-on masonry anchors.
- Door Material:** 1/4" aluminum smooth plate with 1/8" lip for flooring infill.
- Standard Finish:** Mill
- Latch:** Zinc plated steel slam latch with flush key operator on exterior and handle opener on inside. Chrome plated 5/16" steel square key included.
- Hinge:** Aluminum arm-type hinge with 304 stainless steel bolts
- Spring:** Chrome silicone torsion bar.\*
- Hold Open Arm:** Aluminum automatic locking hold open arm with red vinyl grip handle.\*
- Load:** 150 lb/sq ft pedestrian live load
- Sizes:** Minimum 24" x 24" Maximum 48" x 48"
- ORDER SIZE = FRAME INSIDE DIMENSION**

QTY	MODEL	ORDER SIZE		DOORS	APPROX. WEIGHT
		WIDTH	LENGTH		
	FLDR-2424S*	24"	24"	Single	60
	FLDR-3030S	30"	30"	Single	75
	FLDR-3036S	30"	36"	Single	88
	FLDR-3636S	36"	36"	Single	100
	FLDR-4242S	42"	42"	Single	135

Custom Size	
-------------	--

ADDITIONAL OPTIONS		
	304 Stainless steel slam latch	SS
	Bituminous coating on outer frame	BIT
	Neoprene Gasketing	NG
	Door and frame with 3/16" lip for flooring infill	RL

\* Hold open arm & spring not available on 24" x 24"



9702 Newton Ave S. Bloomington, MN 55431 | Many Locations Nationwide

800-554-6077  
sales@activarcpg.com  
www.activarcpg.com

Distributor:		Project:
Contractor:		Approved By:
Date:		Architect:
Scale: N/A	Pages: 1 of 1	Item #: