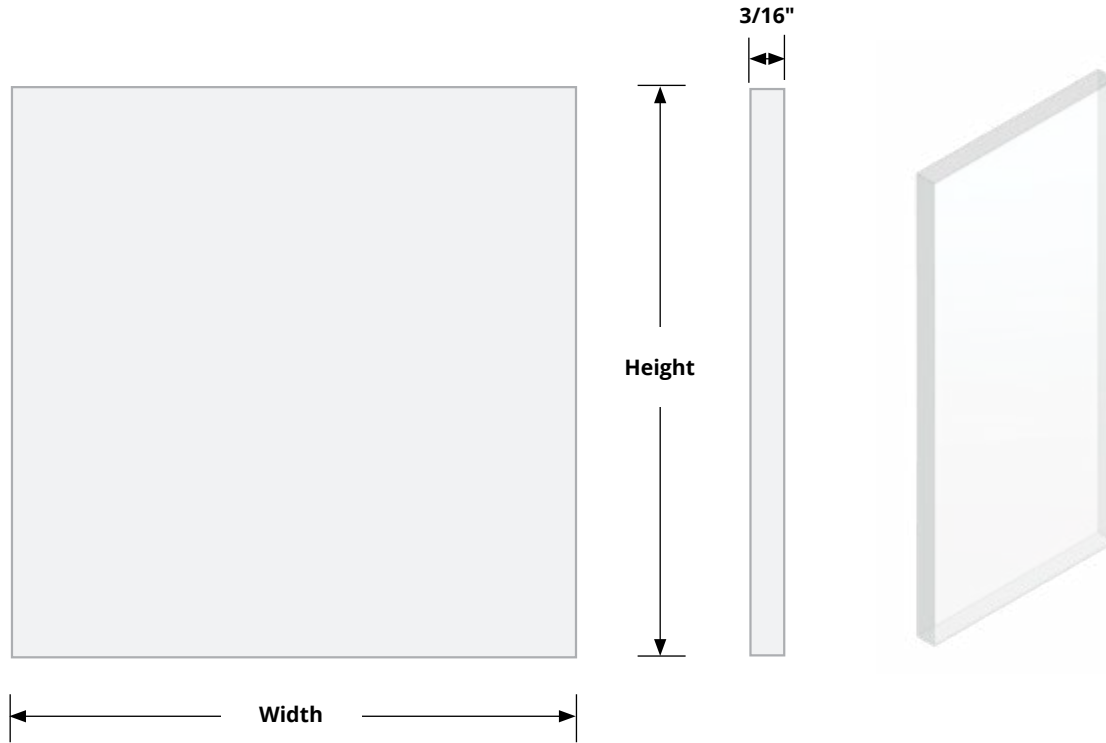


GLAZING - PYRAN PLATINUM F FILMED GLAZING - PPF - Fire-Rated Safety Glazing
Environmentally-friendly Fire and Safety-rated Glazing with Neutral Coloration



SPECIFICATIONS:

Material: Ceramic glass with heavy-duty film applied to one side
Thickness: 3/16" (5 mm)
Weight: 2.6 psf
Light Transmission: 80%
STC: 31
Size:

Minimum: 2" x 2"
Maximum: 43" x 77"

RATINGS:

Fire Rating: ASTM E2074, ASTM E2010-01, UL9, UL10B, UL10C, NFPA80, 252 & 257, UBC 7-2, UBC 7-4, ULC CAN4-S104 & CAN4-S106

Impact Safety Rating: CPSC 16CFR 1201 (CAT I & II) ANSI Z97.1

Compatible Frames: Slimline VSL & VSLH, EZLine VLFEZ, ThruBoltLine VLF

Warranty: Three year limited

OPTIONS & ACCESSORIES:

Finishes: Obscure frosted

Standard Tape: 1/16" x 3/8" wide x 200 ft adhesive backed, black closed cell polyvinyl chloride foam glazing tape applied to glazing or ordered separately.

TAPE, WHEN ORDERED SEPARATELY

GTAPE 200B	200' Roll Tape
-------------------	----------------

Fire-rated Intumescent Tape: 3/64" x 7/16" wide x 8 ft, fire-rated adhesive backed, black tape installed to vision lite pocket in addition to the 1/16" standard tape. Required for UL10C positive pressure rated installations.

TAPE, ORDERED SEPARATELY FOR UL10C

FGS4590-8	8' Roll Fire-rated intumescent tape
------------------	-------------------------------------

NOTE:

Order size is actual glass size. Glazing over 45 min requires the exposed glazing (visible light) be 100 sq. in. or less to maintain rating. See frame submittal for exposed glazing (visible light).

STANDARD PYRAN PLATINUM F

QTY	MODEL	WIDTH X HEIGHT
	PPF 1111-316	11" x 11"
	PPF 0434-316	4" x 34"
	PPF 0526-316	5" x 26"
	PPF 0621-316	6" x 21"
	PPF 2329-316	23" x 29"

MADE-TO-ORDER PYRAN PLATINUM F- EXAMPLE: PPF 1212-316FROST

QTY	MODEL	WIDTH	HEIGHT	- THICKNESS	(FINISH OPTIONS)	(TAPE APPLIED)
	PPF			316	(None)	(None)
					FROST Frosted	T (1/16" Standard Tape)

© PYRAN is a registered trademark of SCHOTT AG.



AIR LOUVERS

800-554-6077
 sales@activarcpg.com
 www.activarcpg.com

9702 Newton Ave S. Bloomington, MN 55431 | Many Locations Nationwide

Distributor:		Project:
Contractor:		Approved By:
Date:		Architect:
Scale: N/A	Pages: 1 of 2	Item #:

GLAZING - PYRAN PLATINUM F FILMED GLAZING - PPF - Fire-Rated Safety Glazing



RATING	MAX IBC ALLOWED AREA* (EXPOSED GLAZING)	UL TESTED MAX EXPOSED DIMENSIONS		GLAZING "BUG" MARKING	IBC LOCATIONS
		WIDTH	HEIGHT		

Doors

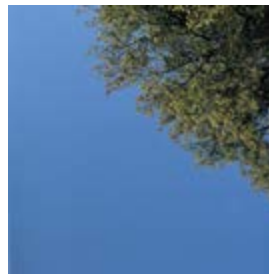
20 min ***	2736 in ² *** (Max Tested)	36"	76"	D-H-NT-90	30 min fire partitions, corridor walls, and other partitions, smoke barriers
		2736 in ² ***			
45 min ***	2736 in ² *** (Max Tested)	36"	76"	D-H-NT-90	1 hour fire partitions, corridor walls, smoke barriers, exterior walls, other partitions and barriers.
		2736 in ² ***			
60 min	100 in ²	36"	76"	D-H-NT-90	1 hour fire resistance fire barriers, enclosures for shafts, exit access stairways, interior exit stairways and ramps, exit passageway walls
90 min		2736 in ²			
		180 min	12"	33"	D-H-NT-180
		100 in ²			

This table is based on IBC 2018 Section 716. Since 2012 IBC has restricted the size of fire protective glazing. The combined height and width cannot exceed the maximum exposed glazing area measurement. Interpretation of Fire and Building Codes may vary. Consult with the Local Authority Having Jurisdiction (AHJ) to determine appropriate standards.

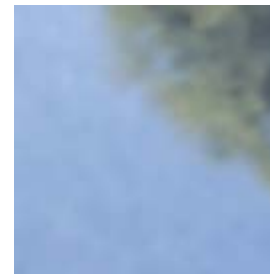
***Sizes from 60 & 90 min UL listing, as allowed by IBC 716.3.1

Window, Transom, Sidelite

20/45 min	3422 in ² (Max tested if ≤25% of wall)	76"	76"	D-H-NT-45/OH-45	1 hour fire partitions, corridor walls, smoke barriers, exterior walls, other partitions and barriers.
------------------	--	-----	-----	-----------------	--



No Finish



Frosted