

SECURITY GRILLES FOR SMOKE VENTS- RSG

Add security and fall protection to rooftop smoke vents.

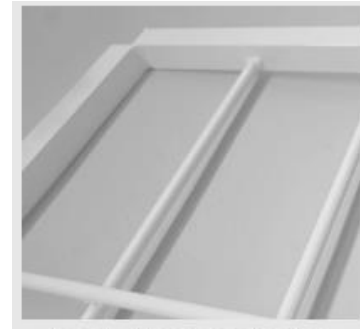
Material: 1/2" Diameter steel rod welded to flange with 6" X 12" bar spacing.

Standard Flange: 14 gauge steel, 1-1/4" x 1-1/4" angle drop-in flange that mounts prior to, and underneath the smoke vent flange. Reference page 2.

Finish: Powder coat silver texture.

Sizes: Minimum 48" x 48", Maximum: 60" x 96"

Installation: Flange mounting holes and mounting hardware are by others.



Model RSGD Drop-In Security Grille



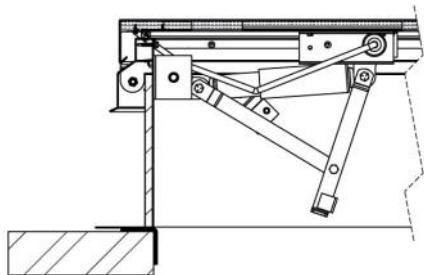
Order Size is Roof Opening Size

Options:

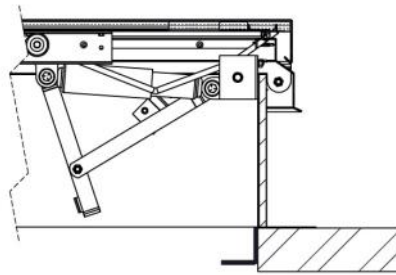
Bolt-in flange (RSGB) Reference page 3. Designed to mount to the inside of smoke vent or to it's support structure.

Bar Spacing

- 6"x 6"
- 8"x 8"
- 12"x12"




RSGD Drop-In



RSGB Bolt-In

QTY	MODEL	PREVIOUS MODEL	CURB OPENING Length x Width	FLANGE
	RSGD-4848ST	SG-4848	48" x 48"	Drop in
	RSGD-4860ST	SG-4860	48" x 60"	Drop in
	RSGD-4872ST	SG-4872	48" x 72"	Drop in
	RSGD-4896ST	SG-4896	48" x 96"	Drop in
	Other Size:	—	___ L x ___ W	__ Drop-In __ Bolt-In

 <p>DUR-RED PRODUCTS</p> <p>9702 Newton Av S. Bloomington, MN 55431 Many Locations Nationwide</p>	<p>☎ 800-554-6077</p> <p>✉ sales@activarcpg.com</p> <p>🌐 www.activarcpg.com</p>	<p>Distributor: _____</p> <p>Contractor: _____</p> <p>Date: _____</p> <p>Scale: N/A</p>	<p>Project: _____</p> <p>Approved By: _____</p> <p>Architect: _____</p> <p>Item # _____</p>	
	<p>Quantity: _____</p>		<p>Pages: 1 of 3</p>	
	<p><small>THE INFORMATION CONTAINED IN THIS DOCUMENT IS THE SOLE PROPERTY OF ACTIVAR CONSTRUCTION PRODUCTS GROUP, INC. ANY REPRODUCTION IN PART OF AS A WHOLE WITHOUT THE WRITTEN PERMISSION OF ACTIVAR CONSTRUCTION PRODUCTS GROUP, INC. IS PROHIBITED.</small></p>			
	<p>REV E – APRIL 2023</p>			

