

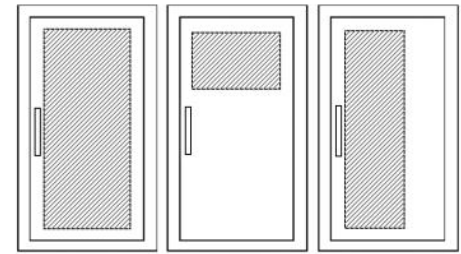
**Fire-Rated Crownline Cabinets Provide A Wide Selection of Door Styles, Glazing and Sizes. These Durable Cabinets are Designed to Industry Standards for Fire Department Valves, Fire Hose Rack Units and Extinguishers.**

**Door & Trim:** #4 Brushed finish stainless steel. 1-3/4" Trim on face and door. These flush cabinet doors are mounted in a 5/8" door stop, are attached by a continuous hinge and are equipped with zinc-plated handle and roller catch for all non-locking doors. Theft-deterrent SAF-T-LOK™ also available

**Trim Style and Depth:** 1-3/4" face trim on frame and 1-1/4" trim on door. *Recessed* - 3/8" flat trim, *Semi-recessed* - 1-1/4" Square Edge or 2-1/2" Rolled Edge. All models meet ADA 4" projection requirement. See separate submittal for trimless models.

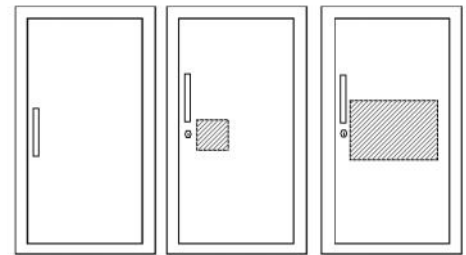
**Tub:** The tub is constructed of cold rolled steel with white powder-coat finish standard. Tub forms a flange to cover cut edges of wallboard material. Fire-resistant material is attached to the exterior of the tub.

**Knockouts:** Knockouts are not provided on Fire-Rated Cabinets. Instructions for Knockouts in the field are provided and must be strictly adhered to, to maintain fire rating.

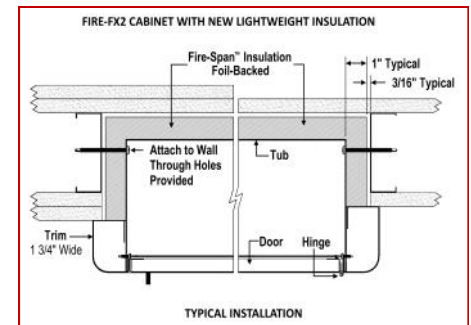


F - Full glass with pull  
G - Full glass with pull handle and Saf-T-Lok (Not Shown)  
D - Horizontal duo panel with pull  
E - Horizontal duo panel with pull and Saf-T-Lok (Not Shown)  
V - Vertical duo panel with pull  
W - Vertical duo panel with pull and Saf-T-Lok (Not Shown)

*Fire Rating: Fire-FX2™ cabinets are UL listed and labeled as an approved membrane penetration firestop system for up to 2 hours in accordance with UL 1479 (ASTM-E814) and CAN/ULC-S115, when properly installed in a wall assembly according to installation instructions.*



S21 - Solid with pull  
L22 - Solid with pull and Saf-T-Lok  
L24 - Solid with cylinder key lock/no pull (L22,24 not shown)  
B10 - Acrylic view window with pull, and Saf-T-Lok  
A - Center duo panel with pull and Saf-T-Lok



**STEP 1: SELECT MODEL NUMBER, TRIM & QUANTITY (Refer to Chart on Page 2)**

**STEP 2: SELECT DOOR STYLE**

(Check one box below)

- |   |  |
|---|--|
| <input type="checkbox"/> <b>F</b> Full Glazing                        | <input type="checkbox"/> <b>L22</b> Solid with SAF-T-LOK                 |
| <input type="checkbox"/> <b>G</b> Full Glazing with SAF-T-LOK         | <input type="checkbox"/> <b>V</b> Vertical Duo                           |
| <input type="checkbox"/> <b>D</b> Horizontal Duo Panel                | <input type="checkbox"/> <b>W</b> Vertical Duo with SAF-T-LOK            |
| <input type="checkbox"/> <b>E</b> Horizontal Duo Panel with SAF-T-LOK | <input type="checkbox"/> <b>B10</b> Acrylic View Window with SAF-T-LOK   |
| <input type="checkbox"/> <b>A</b> Center Duo Panel with SAF-T-LOK     | <input type="checkbox"/> <b>L24</b> Solid with Cylinder Lock & No Handle |
| <input type="checkbox"/> <b>S21</b> Solid Door                        | View Door Styles Online  |

**STEP 3: SELECT DOOR GLAZING**


(Check one box below)

- |   |   |
|---|---|
| <input type="checkbox"/> <b>10</b> Clear Acrylic                    | <input type="checkbox"/> <b>16</b> Gray Acrylic           |
| <input type="checkbox"/> <b>13</b> Clear Wire Glass with Wire Glass | <input type="checkbox"/> <b>17</b> Clear Tempered Glass   |
| <input type="checkbox"/> <b>15</b> Bronze Acrylic                   | <input type="checkbox"/> <b>18</b> Laminated Safety Glass |

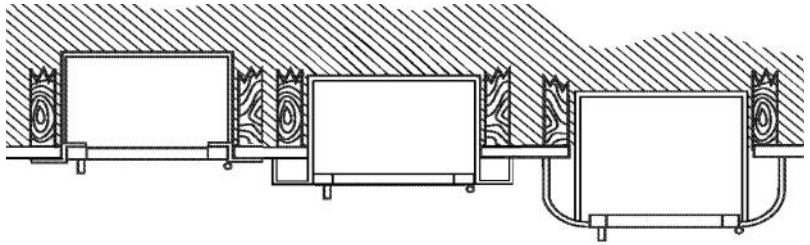
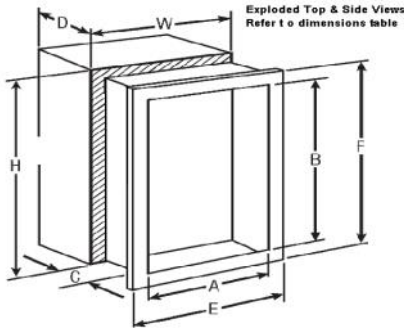
**STEP 4: OPTIONAL FEATURES AT ADDITIONAL COST:**

- |  |  |   |
|--|--|---|
| <input type="checkbox"/> #6 Matte Finish Stainless Steel                 | <input type="checkbox"/> <b>PUCH</b> Polished Chrome Pull  | <input type="checkbox"/> Black Vertical FE Letters <b>LDCVBF E</b>  |
| <input type="checkbox"/> #7 Polished Stainless Steel                     | <input type="checkbox"/> <b>FDVO</b> Decal <b>Fire Department Valve</b> Octagonal 6 x 6"             | <input type="checkbox"/> Red Vertical FE Letters <b>LDCVRF E</b>  |
| <input type="checkbox"/> #8 Mirror Finish Stainless Steel                | <input type="checkbox"/> <b>1403</b> Decal <b>Fire Hose</b> Black/Red Horiz. Letters 4 x 9           | <input type="checkbox"/> White Vertical FE Letters <b>LDCVWF E</b>  |
| <input type="checkbox"/> # 4 Finish Stainless Tub                        | <input type="checkbox"/> <b>LDCHRFDV-R</b> Diecut <b>Fire Dept. Valve</b> Horiz. 10-1/4 x 4-3/8      | <input type="checkbox"/> Black Horizontal FE Letters <b>LDCHBF E</b>  |
| Optional Tub Color: ___ Black ___ Red                                    | <input type="checkbox"/> <b>LDCVRFDV</b> Diecut <b>Fire Dept Valve</b> Vert. 3/4" x 21 1/2"          | <input type="checkbox"/> Red Horizontal FE Letters <b>LDCHRF E</b>  |
| <input type="checkbox"/> <b>CA</b> Commander Alarm                       | <input type="checkbox"/> <b>LDCVRFDV-R</b> Diecut <b>Fire Dept Valve</b> Vert. Rever. 3/4" x 21 1/2" | <input type="checkbox"/> White Horizontal FE Letters <b>LDCHWF E</b>  |
| <input type="checkbox"/> <b>BA</b> Brigadier Alarm                       | <input type="checkbox"/> <b>LDCHRFDV</b> Diecut <b>Fire Department Valve</b> Ascend. 1" x 17"        | <input type="checkbox"/> Lettering: Etched on Glass, Engraving on Metal, Silkscreen; Not Available for #7 or #8 |
| <input type="checkbox"/> Futura "Fire" Handle ___ Mill ___ Red ___ White | <input type="checkbox"/> <b>LDCVRFSCV-R</b> Diecut <b>Fire Sprinkler Cont. Valve</b> Vert 3/4" x 18" | Finish on Doors. Check Box and Attach Separate Submittal to Order.  |
| <input type="checkbox"/> <b>PRH</b> Recessed Pull Handle                 | Fire Hose Racks - See Separate Submittal   |   |
| <input type="checkbox"/> Shelf for 8000 Series—12" from Top              |  |   |

It is the responsibility of the customer to communicate specifications and product performance requirements that are needed for their application. This document is intended to convey potential product configurations and offerings. It is not to be used to imply or represent a specification or rating, of finished products shipped. Detailed, specific submittals can be created upon request. It is the responsibility of the customer to specify product accordingly to comply with local laws, codes, and ordinances.

 <p><b>JL INDUSTRIES</b></p> <p>©2023 ACTIVAR CONSTRUCTION PRODUCTS GROUP, INC.</p>	Distributor:	Quantity:
	Contractor:	Approved By:
	Model #:	Architect:
	Project:	Date:
<p><b>HEADQUARTERS:</b> 9702 NEWTON AVE S, BLOOMINGTON, MN 55431 <b>PH:</b> 800-554-6077 <b>EMAIL:</b> SALES@ACTIVARCPG.COM WWW.ACTIVARCPG.COM</p> <p><b>MANUFACTURING:</b> BLOOMINGTON, MN &amp; COMMERCE, CA <b>WAREHOUSES:</b> SEE WEBSITE FOR LOCATIONS 12/22/2023</p>		

**SUBMITTAL:CROWLINE FIRE-FX2™ VALVE & HOSE CABINETS - STAINLESS STEEL PG 2 OF 2**



**3/8" (.9cm)  
FLAT TRIM**

**1-1/4" (3.8cm)  
SQUARE TRIM**

**2-1/2" (6.4cm)  
ROLLED EDGE**

TRIM & DOOR MATERIAL & SERIES		TUB I.D. W x H x D in Inches			FRAME O.D.		RECESSED WALL OPENING DIMS.			RECOMMENDED HOSE RACK, FIRE DEPARTMENT VALVES & EXTINGUISHERS
QTY #	TRIM STYLE	A	B	C	E	F	Width	Height	Depth	
<b>Cabinets with Hose Rack &amp; Extinguisher or Fire Department Valve</b>										
6035	FLAT TRIM 3/8"	24	30	6	27 3/8	33 3/8	26 5/16	32 5/16	6 15/16	<b>HOSE RACK:</b> 1- 1/2" x 1-1/2" Hose Rack Unit with 50 or 75' Hose (HRA:050B, 050CH, 075B, 075CH) & Cosmic 2½ or Galaxy 2½- 5 lb Extinguisher
6036	1-1/4" SQUARE EDGE	24	30	6	27 3/8	33 3/8	26 5/16	32 5/16	5 15/16	
6037	2-1/2" ROLLED EDGE	24	30	6	27 3/8	33 3/8	26 5/16	32 5/16	4 11/16	
6235	FLAT TRIM 3/8"	24	34 3/4	6	27 3/8	38 1/8	26 5/16	37 1/16	6 15/16	<b>HOSE RACK:</b> 1- 1/2" x 1-1/2" Hose Rack Unit - 100' Hose (HRA 100B, HRA100CH ) & Cosmic 2½ or Galaxy 2½- 5 lb Extinguisher
6236	1-1/4" SQUARE EDGE	24	34 3/4	6	27 3/8	38 1/8	26 5/16	37 1/16	5 15/16	
6237	2-1/2" ROLLED EDGE	24	34 3/4	6	27 3/8	38 1/8	26 5/16	37 1/16	4 11/16	
6135	FLAT TRIM 3/8"	24	30	8	27 3/8	33 3/8	26 5/16	32 5/16	8 15/16	<b>HOSE RACK:</b> 2-1/2" x 1-1/2" Hose Rack Unit 50 or 75' Hose (HRA050B-2.5, HRA075B-2.5)
6136	1-1/4" SQUARE EDGE	24	30	8	27 3/8	33 3/8	26 5/16	32 5/16	7 15/16	
6137	2-1/2" ROLLED EDGE	24	30	8	27 3/8	33 3/8	26 5/16	32 5/16	6 11/16	
6435	FLAT TRIM 3/8"	24	34 3/4	8	27 3/8	38 1/8	26 5/16	37 1/16	8 15/16	<b>HOSE RACK:</b> 2-1/2" x 1-1/2" Hose Rack Unit 100' Hose (HRA100B-2.5)
6436	1-1/4" SQUARE EDGE	24	34 3/4	8	27 3/8	38 1/8	26 5/16	37 1/16	7 15/16	
6437	2-1/2" ROLLED EDGE	24	34 3/4	8	27 3/8	38 1/8	26 5/16	37 1/16	6 11/16	
6635	FLAT TRIM 3/8"	24	38 3/4	8	27 3/8	42 1/8	26 5/16	41 1/16	8 15/16	<b>HOSE RACK:</b> 2-1/2" x 1-1/2" Hose Rack Unit 125' Hose (HRA125B-2.5)
6636	1-1/4" SQUARE EDGE	24	38 3/4	8	27 3/8	42 1/8	26 5/16	41 1/16	7 15/16	
6637	2-1/2" ROLLED EDGE	24	38 3/4	8	27 3/8	42 1/8	26 5/16	41 1/16	6 11/16	
6335	FLAT TRIM 3/8"	30	30	8	33 3/8	33 3/8	32 5/16	32 5/16	8 15/16	<b>HOSE RACK &amp; FD VALVE OR EXTINGUISHER:</b> 1-1/2" OR 2-1/2" Valve; 50' or 75' Hose Rack Unit Plus FD Valve or Cosmic or Galaxy Fire Extinguisher
6336	1-1/4" SQUARE EDGE	30	30	8	33 3/8	33 3/8	32 5/16	32 5/16	7 15/16	
6337	2-1/2" ROLLED EDGE	30	30	8	33 3/8	33 3/8	32 5/16	32 5/16	6 11/16	
6535	FLAT TRIM 3/8"	32 3/4	34 3/4	8	36 1/8	38 1/8	35 1/16	37 1/16	8 15/16	<b>HOSE RACK &amp; FD VALVE OR EXTINGUISHER:</b> 1-1/2" OR 2-1/2" Valve, 100' Hose Rack Unit Plus FD Valve or Cosmic or Galaxy Fire Extinguisher
6536	1-1/4" SQUARE EDGE	32 3/4	34 3/4	8	36 1/8	38 1/8	35 1/16	37 1/16	7 15/16	
6537	2-1/2" ROLLED EDGE	32 3/4	34 3/4	8	36 1/8	38 1/8	35 1/16	37 1/16	6 11/16	
7235	FLAT TRIM 3/8"	32 3/4	38 3/4	8	36 1/8	42 1/8	35 1/16	41 1/16	8 15/16	<b>HOSE RACK &amp; FD VALVE OR EXTINGUISHER:</b> 1-1/2" OR 2-1/2" Valve, 125' Hose Rack Unit Plus FD Valve or Cosmic or Galaxy Fire Extinguisher)
7236	1-1/4" SQUARE EDGE	32 3/4	38 3/4	8	36 1/8	42 1/8	35 1/16	41 1/16	7 15/16	
7237	2-1/2" ROLLED EDGE	32 3/4	38 3/4	8	36 1/8	42 1/8	35 1/16	41 1/16	6 11/16	
<b>Cabinets for Fire Department Valves</b>										
8535	FLAT TRIM 3/8"	18	18	8	21 3/8	21 3/8	20 5/16	20 5/16	8 15/16	<b>FIRE DEPARTMENT VALVE:</b> 1-1/2" or 2-1/2" Fire Department Valve with Cap and Chain
8536	1-1/4" SQUARE EDGE	18	18	8	21 3/8	21 3/8	20 5/16	20 5/16	7 15/16	
8537	2-1/2" ROLLED EDGE	18	18	8	21 3/8	21 3/8	20 5/16	20 5/16	6 11/16	
8435	FLAT TRIM 3/8"	18	18	10	21 3/8	21 3/8	20 5/16	20 5/16	10 15/16	<b>DUAL SIDE BY SIDE FIRE DEPARTMENT VALVE &amp; EXTINGUISHER OR 2 FIRE DEPARTMENT VALVES:</b> 1-1/2" or 2-1/2" Fire Department Valve with Cap and Chain Plus Extinguisher - Cosmic & Galaxy 2½ to 10
8436	1-1/4" SQUARE EDGE	18	18	10	21 3/8	21 3/8	20 5/16	20 5/16	9 15/16	
8437	2-1/2" ROLLED EDGE	18	18	10	21 3/8	21 3/8	20 5/16	20 5/16	8 11/16	
8735	FLAT TRIM 3/8"	26	26	8	29 3/8	29 3/8	28 5/16	28 5/16	8 15/16	<b>DUAL EXTINGUISHER &amp; FD VALVE CABINET:</b> Cosmic or Galaxy Fire Extinguisher
8736	1-1/4" SQUARE EDGE	26	26	8	29 3/8	29 3/8	28 5/16	28 5/16	7 15/16	
8737	2-1/2" ROLLED EDGE	26	26	8	29 3/8	29 3/8	28 5/16	28 5/16	6 11/16	
8635	FLAT TRIM 3/8"	26	26	10	26 1/4	26 1/4	28 5/16	28 5/16	10 15/16	
8636	1-1/4" SQUARE EDGE	26	26	10	26 1/4	26 1/4	28 5/16	28 5/16	9 15/16	
8637	2-1/2" ROLLED EDGE	26	26	10	26 1/4	26 1/4	28 5/16	28 5/16	8 11/16	
8035	FLAT TRIM 3/8"	16	40	9	19 3/8	43 3/8	18 5/16	42 5/16	9 15/16	
8036	1-1/4" SQUARE EDGE	16	40	9	19 3/8	43 3/8	18 5/16	42 5/16	8 15/16	
8037	2-1/2" ROLLED EDGE	16	40	9	19 3/8	43 3/8	18 5/16	42 5/16	7 11/16	

**ADA Cabinet Mounting Height:** Standard Pull on G, E, W, L22 and B Door Styles with Saf-T-Lok are 3 5/8" Higher than Door Center, so Allow for that When Mounting Cabinet. Standard Pull with No Lock or Doors with Recessed Pull are Centered on Door.