

# VALVE & HOSE CABINETS—FX2—FIRE-RATED — 14I-104

## INSTALLATION AND MAINTENANCE GUIDE

### TOOLS AND HARDWARE NEEDED (optional)

Screw Gun, Universal # 6 x 2-1/2" (6.4 cm) self-drilling screws

### METAL OR WOOD FRAMING INSTALLATION (FIG 1)

1. Remove all hardware and glazing, unlock cabinet if lock provided.
2. Install a framed opening above, below and at both sides of cabinet opening at specified location. Wall opening width, height and depth must correspond with dimensions indicated in catalog or detail and submittal sheet.
3. Use holes provided in cabinet tub for attaching to studding. If wall configuration does not allow for that, then follow step 4 below; otherwise, skip to step 6.
4. [Drilling Additional Holes in Tub] Drill (2) 1/8" (3.2 mm) holes through tub on each side of cabinet.
5. [Adding Holes for Plumbing Knockouts] **NOTE: The following conditions must be adhered to when installing plumbing knockouts in fire-rated hose and/or valve cabinets (FIG 2).**  
Drill knockout holes with a circular-cutting hole saw. The pipe used must be iron or steel. The tolerance between the pipe and the knockout must be 1/16" (0.16 cm) or less at every point along the knockout. For example, the knockout for 1-1/2" (3.8 cm) pipe must not be larger than 1-5/8" (4.1 cm) in diameter, and the pipe must be centered within the knockout. When the pipe is installed, the installer must provide fire stopping sealant (listed in accordance with ASTM E814 and UL 1479) for through-penetrations in fire-resistance rated wall and cabinet assemblies.
6. Place cabinet in position and attach with Universal # 6 x 2-1/2" (6.4 cm) self-drilling screws. Be sure not to over-tighten on either side, which could pull the cabinet out of position in the opening and result in an exposed gap between the cabinet frame and wall opening.
7. Start the screw without completely tightening; then start a screw on the opposite side of the tub. Once all screws are started, tighten each screw in a "criss-cross" pattern. A torque setting of 4-6 is recommended if using a screw gun.
8. Once screws are fully tightened, check cabinet for square and plumb. Adjust if necessary. All interior sides should be straight with no bowing or warping.
9. Check cabinet door assembly for freedom of movement. If it binds, shim as necessary to remove any racking of tub at attachments of stud. Cabinet will need to be removed temporarily in order to add shims.
10. Remove protective plastic from acrylic or glass and install decal if intended for glass.
11. Align glazing on inside of door, holding in place while installing glass mounting clips on inside of door. Do not over-tighten.
12. Install handle and roller catch or SAF-T-LOK™ in door.

FIG 1

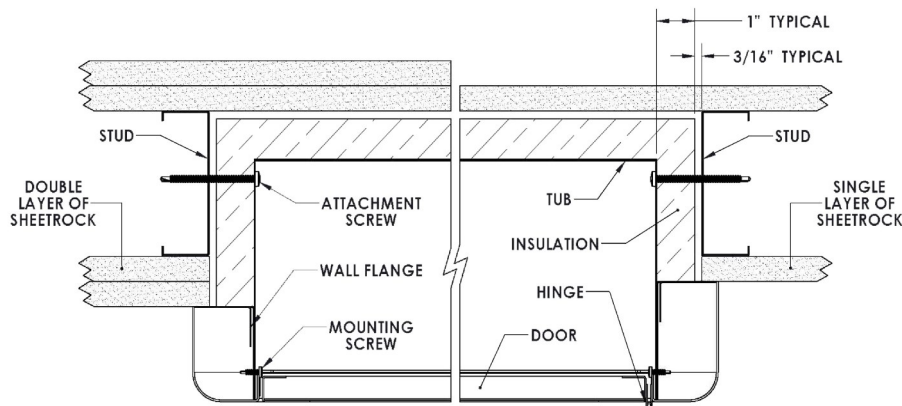
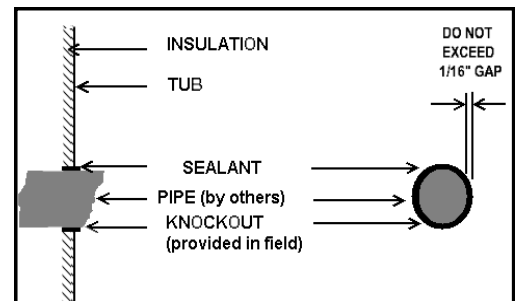


FIG 2—Valve & Hose Knockouts



Knockout must be not more than 1/8" larger in diameter than pipe OD. Pipe must be centered in hole so gap does not exceed 1/16" at any point.

Note: Drawings shown on this page are examples only of typical installation in a fire-rated wall, and are not to be used as recommendations for wall construction



JL INDUSTRIES



800-554-6077



sales@activarcpg.com



www.activarcpg.com

INSTALLATION AND MAINTENANCE  
GUIDE 14I-104

9702 Newton Av S. Bloomington, MN 55431 | Many Locations Nationwide

Page 1 of 4